



CATTLEMEN'S CONGRESS

WATCH ONLINE WWW.LIVEAUCTIONS.TV

SIMMENTAL

Open Show

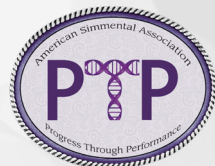
Tuesday
JANUARY 9

JIM NORICK ARENA
8 AM

SHOW ORDER
PERCENTAGE FEMALES
PERCENTAGE BULLS
PUREBRED BULLS
PUREBRED FEMALES

JUDGES
SCOTT TRENNEPOHL, IN
TYLER GATES, IN

 **SimGenetics**
PROFIT THROUGH SCIENCE
American Simmental Association



Grand Champion Purebred Simmental Heifer
Weis Miss Lilly 35J, s. by WLE Copacetic E02
Exhibited by Colt Roeder



Grand Champion Purebred Simmental Bull
R/C SFI Creedence 417J, s. by JSUL Something About Mary
Exh. by C-4 Land & Cattle, Weber & Smith and Reitzenstein



Grand Champion Purebred Simmental Pair
WHF Andie 368H and MDAY/WHF Andie 368K
Exhibited by Eli Mundy



Grand Champion Percentage Simmental Heifer
Wallace Travel Gal 172J, s. by SJW Exit 44 711E
Exhibited by Circle M Farms & Rocking P Livestock



Grand Champion Percentage Simmental Bull
Harkers Unleashed, s. by Silveiras Style 9303
Exhibited by JS Simmentals and Minnaert Show Cattle



Grand Champion Percentage Simmental Pair
Micks Amy H23 and Micks Amy K25
Exhibited by Hoffman Cattle Service



Grand Champion Simbrah Heifer
Hagan Legacy 48J, s. by Hagan N.W.A. 1E
Exhibited by Miranda Skaggs



Grand Champion Simbrah Bull
Hagan El Patron 12J, s. by Hagan Kodiak 647E
Exhibited by Hagan Cattle Company



Grand Champion Simbrah Pair
Smith McCrary Roxie 52H and Smith McCrary Rockin Roxanne
Exhibited by Hallie Hackett

2023 Open Show Champions

2024 Cattleman's Congress Open Percentage Simmental Show								Percentage Simmental EPD Averages and Percentile Ranks																						
								EPD Averages								12.5		75		116		6.7		23.8		14.4		0.34		-0.04
Place	Tag	Exhibitor	Hometown	ASA No.	Animal Name	Sire	DOB	CE	%	WW	%	YW	%	MCE	%	Milk	%	STAY	%	MB	%	BF	%	REA	%	\$API	%	\$TI	%	GE

All EPDs and indexes printed in this program and provided to the judges are current as of 1/5/24.

Class 1: Percentage Simmental Heifers, Born May - June 2023

70487	SADIE ROBISON	CUSHING, OK	4284119	HNRX FANCY SKYMERE 3135L	JSUL SOMETHING ABOUT MARY 8421	6/5/23	10.0	85	69	75	107	70	4.5	85	19.3	90	10.7	85	0.14	90	-0.013	85	0.52	80	104	95	67	95
70488	CIRCLE M FARMS & ROCKING P LIVESTOCK	MAYSVILLE, KY	4263494	PUGH STERTZ SHEZA BLACKBIRDS0L	JSUL SOMETHING ABOUT MARY 8421	5/25/23	11.3	70	75	50	119	45	6.0	65	19.7	85	10.0	90	0.23	75	-0.010	90	0.53	80	113	80	75	70
70491	ASHLEE PURVINE	FAY, OK	4258329	NC WINNIE 2L	INNOCENT DREAM 31E	5/19/23	11.6	65	61	95	87	95	7.3	45	19.8	85	13.7	60	0.27	65	-0.046	45	0.78	35	116	75	67	95
70493	CONNORS STATE COLLEGE	WARNER, OK	4278308	CSC BILLY ANNE 30-3L	FF COPACETIC 9478G	5/15/23	14.4	30	59	95	86	99	5.6	70	20.1	85	7.7	99	0.28	65	-0.025	70	0.32	99	111	85	68	90
70498	PRAIRIE VIEW CATTLE CO	JOHNSON, KS	4292181	PEACHY 176L	HARKER UNLEASHED	5/13/23	11.3	70	80	35	127	30	6.1	65	17.2	95	11.8	80	0.34	55	-0.042	45	0.71	50	122	70	78	60
70494	DELAINEE MOORE	CANUTE, OK	4290955	JDEW JOSIE 2L	5T POWER CHIP 4790	5/10/23	13.3	40	80	35	117	50	7.0	50	19.6	85	11.6	80	0.49	30	-0.011	85	0.61	65	135	45	85	35

Class 2: Percentage Simmental Heifers, Born April 2023

70500	SHEFFIELD RANCH	POOLVILLE, TX	4241123	UDE BARB ROSE 249L	SO REMEDY 7F	4/28/23	10.6	75	73	60	120	45	4.7	85	16.1	99	10.8	85	-0.07	99	-0.068	20	0.77	40	98	95	66	95
70501	ABIGAIL PORTE	CHARLO, MT	4231562	SKR BETH L5	GEFF COUNTY O	4/25/23	8.7	90	72	65	107	70	2.9	99	10.0	99	11.9	75	0.15	85	-0.058	30	0.64	60	107	90	70	90
70504	RICHBURG CATTLE CO	GROOM, TX	4241522	JCBB LUCY L397	TRCC PANDEMIC	4/20/23	9.9	85	73	60	115	55	5.9	70	20.1	85	6.5	99	0.02	99	-0.053	30	0.60	70	92	99	68	90
70505	KADE HENRICHS	OKARCHE, OK	4258824	MS JH ZENYATIA	W/C RELENTLESS 32C	4/19/23	6.8	99	77	45	108	70	2.5	99	17.1	95	11.2	85	0.29	65	-0.034	60	0.78	35	108	90	73	75
70506	BUCK CREEK RANCH	YALE, OK	4258646	B C R CALLIE L107	RP/BCR EMINENCE H005	4/17/23	10.0	85	78	45	119	45	4.8	85	17.5	95	11.5	80	0.33	55	-0.056	30	0.69	55	120	70	78	60
70508	BRECKYN BLOOMBERG	SECOR, IL	4285605	SULL LOVE TOO 123L	THSF LOVER BOY B33	4/14/23	11.7	65	77	45	114	55	4.4	90	22.7	65	15.7	40	0.35	50	-0.038	60	0.57	75	131	55	79	55
70509	RYLEE ECKLES	HOLDENVILLE, OK	4245884	360 PRINCESS 3507L	JSUL SOMETHING ABOUT MARY 8421	4/12/23	13.9	35	72	65	114	55	7.7	35	13.3	99	10.1	90	0.27	65	-0.019	85	0.62	65	118	75	74	75
70510	MURRAY STATE COLLEGE	TISHOMINGO, OK	4236229	MISS PV LEXI	LLSF UPRISING Z925	4/12/23	10.4	80	72	65	108	70	4.5	85	17.7	95	10.6	85	0.09	95	-0.089	5	0.44	90	101	95	68	90
70511	CONNORS STATE COLLEGE	WARNER, OK	4278307	CSC SILVIE 26-3L	FF BANKROLL 9457G	4/12/23	10.5	80	62	95	92	95	6.0	65	20.4	80	9.3	95	0.18	85	-0.055	30	0.61	65	102	95	66	95
70512	CONNORS STATE COLLEGE	WARNER, OK	4278306	CSC DOLLY 25-3L	FF COPACETIC 9478G	4/10/23	13.3	40	57	99	77	99	7.9	35	18.3	90	6.6	99	0.13	90	-0.078	10	0.44	90	96	99	62	99
70513	RHETT KEATON	ANDERSON, MO	4244501	WALLACE YOLANDA 340L	WLE COPACETIC E02	4/9/23	13.2	45	75	55	112	60	7.8	35	18.5	90	11.0	85	-0.02	99	-0.067	20	0.73	45	104	95	69	90
70514	DOUBLE IMAGE CATTLE CO	ATLANTA, IN	4257578	JUNCKS 616L	W/C RELENTLESS 32C	4/4/23	7.7	95	75	55	107	70	3.2	95	17.6	95	7.7	99	0.11	90	-0.056	30	0.73	45	91	99	68	90
70515	LARAMIE SASSER	EDMOND, OK	4258903	HCCO COUNTRESS 121L	STCC TECUMSEH 058J	4/4/23	9.5	85	66	85	96	90	4.9	80	16.8	95	14.2	55	0.26	70	-0.056	30	0.72	45	115	80	69	90

Class 3: Percentage Simmental Heifers, Born March 2023

70518	KALE ROBISON	CUSHING, OK	4231561	SKR SMOKESHOW L1	ROCKING P PRIVATE STOCK H010	3/29/23	13.0	45	63	90	95	90	7.1	45	17.6	95	8.6	95	0.27	65	-0.057	30	0.56	75	111	85	70	85
70519	WALLACE CATTLE CO - GROSENBACHER CATTLE - ROCKING P LIVESTOCK	MAYSVILLE, KY	4264948	KLSF RITA 3001L	JSUL SOMETHING ABOUT MARY 8421	3/27/23	12.2	55	74	60	112	60	5.5	75	19.0	90	11.1	85	0.28	65	-0.031	60	0.89	20	119	75	76	70
70521	CONNORS STATE COLLEGE	WARNER, OK	4278304	CSC GOOSE 9-3L	FF POACHER 700E	3/26/23	11.2	70	69	75	101	80	6.0	65	20.1	85	9.7	90	0.17	85	-0.077	10	0.74	45	117	75	74	75
70522	McCOY LANDWEHR	ENID, OK	4250004	WALLACE PRIDE LASS 334L	JSUL SOMETHING ABOUT MARY 8421	3/25/23	13.7	40	75	50	119	45	5.1	80	20.3	80	11.1	85	0.26	70	-0.038	60	0.72	45	122	70	77	65
70523	ADDY ZELLOW	JAY, OK	4255314	STOTLER'S LUCY 46L	JSUL SOMETHING ABOUT MARY 8421	3/24/23	11.2	70	77	45	122	40	5.1	80	20.3	80	11.2	85	0.18	85	-0.017	85	0.77	40	113	80	74	75
70524	JAELYNN JACKSON	WALNUT SPRINGS, TX	4241119	UDE PRINCESS 172L	HARKERS UNLEASHED	3/23/23	7.9	95	74	55	113	60	4.0	90	17.8	95	10.5	85	0.32	55	-0.043	45	0.54	80	108	90	71	80
70526	HADLEY HENDRICKSON	FARMLAND, IN	4243666	S&S COWAN DUA LIPA 758L	ROSE MC ENCORE 0463	3/20/23	6.3	99	74	55	106	75	3.4	95	15.0	99	10.7	85	-0.22	99	-0.040	60	0.47	85	77	99	59	99
70527	LAYNIE WRIGHT	LAKEPORT, CA	4269161	JSUL WHO DAT 3440L	NEXT LEVEL	3/20/23	11.1	70	79	35	116	50	5.5	75	22.2	70	7.9	99	0.17	85	-0.064	20	0.76	40	102	95	73	75
70528	JS SIMMENTALS	MAXWELL, IA	4236073	CCS/JS SUMMER 50L	HARKERS UNLEASHED	3/17/23	6.4	99	86	15	130	25	3.4	95	17.6	95	13.4	65	0.18	85	-0.067	20	0.68	55	109	85	76	65
70529	SARA SULLIVAN	DUNLAP, IA	4276572	JSUL REBA'S DIVA 3354L	THSF LOVER BOY B33	3/17/23	10.6	75	77	45	117	50	4.7	85	24.3	50	15.7	40	0.27	65	-0.050	45	0.70	50	125	65	77	65

Place	Tag	Exhibitor	Hometown	ASA No.	Animal Name	Sire	DOB	CE	%	WW	%	YW	%	MCE	%	Milk	%	STAY	%	MB	%	BF	%	REA	%	\$API	%	\$TI	%	GE
-------	-----	-----------	----------	---------	-------------	------	-----	----	---	----	---	----	---	-----	---	------	---	------	---	----	---	----	---	-----	---	-------	---	------	---	----

Class 4: Percentage Simmental Heifers, Born March 2023

70531	JACEY MASSEY	BOLEY, OK	4266899	NEW TREND PANAMA 15L	STAG GOOD TIMES 201 ET	3/13/23	14.2	30	72	65	108	70	5.8	70	18.9	90	10.8	85	0.13	90	-0.038	60	0.50	85	112	85	72	80
70532	MERCEDES FERREE	SULLIVAN, IN	4242375	FLAR BECKY 315L ET	SCC SCH 24 KARAT 838	3/11/23	5.6	99	79	40	118	45	3.1	95	22.2	70	9.9	90	0.16	85	-0.027	70	0.71	50	98	99	71	85
70533	CHANCEE CLARK	MULDROW, OK	4243668	S&S NXF TSSC JENNIFER ANNISTON	MR HOC BROKER	3/9/23	8.1	95	68	80	99	85	3.7	95	17.6	95	10.8	85	-0.01	99	-0.051	30	0.60	70	91	99	62	99
70534	TY KITZEROW	SAINT CHARLES, IA	4245396	TJSC DIAMOND 200L	TJSC HAMMER TIME 35D	3/7/23	12.2	55	62	95	81	99	3.9	90	14.7	99	10.4	90	0.14	90	-0.076	10	0.59	70	104	95	65	95
70535	MORGAN JACKSON	KAUFMAN, TX	4258902	HCCO COUNTESS 718L	FRKG VICTORY 78J	3/6/23	7.8	95	69	75	97	90	2.9	99	14.1	99	9.7	90	0.16	85	-0.070	20	0.68	55	98	95	67	95
70537	BLAKE STEELE	REPUBLIC, MO	4311849	STEELE SAZERAC B15L	W/C BANK ON IT 273H	3/3/23	11.2	70	76	45	112	60	7.2	45	22.7	65	13.4	65	0.10	95	-0.037	60	0.79	35	119	70	74	75
70538	GRANT WARD	OAK GROVE, MO	4244493	WALLACE FRONTIER GAL 330L	SJW EXIT 44 7111E	3/3/23	11.3	70	73	60	110	65	6.3	60	21.7	70	10.9	85	0.28	65	-0.022	70	0.53	80	116	80	75	70
70539	JS SIMMENTALS	MAXWELL, IA	4246014	CCS/JS SUMMER 47L	HARKERS UNLEASHED	3/2/23	6.4	99	86	15	130	25	3.4	95	17.6	95	13.4	65	0.18	85	-0.067	20	0.68	55	109	85	76	65

Champion Spring Heifer Calf _____
Reserve Champion Spring Heifer Calf _____

Class 5: Percentage Simmental Heifers, Born February 2023

70540	KENNADI BROGDON	WAXAHACHIE, TX	4243845	LAKEVIEW BONNIE	SCC SCH 24 KARAT 838	2/27/23	6.3	99	76	50	117	50	3.2	95	24.5	45	9.8	90	0.05	99	-0.038	60	0.81	30	93	99	68	90
70542	GLENNYS MCGURK	KINGMAN, IN	4258503	HARKERS TRIXIE 0105 L135	W/C RELENTLESS 32C	2/27/23	9.1	90	69	75	98	85	3.9	90	18.5	90	8.7	95	0.23	75	-0.066	20	1.01	10	102	95	70	90
70543	AUBREY NEAL	OSGOOD, IN	4285349	JBOY DARBY 321L	NEXT LEVEL	2/26/23	7.2	99	74	55	106	75	1.8	99	22.1	70	9.9	90	0.04	99	-0.090	5	0.99	15	93	99	67	95
70544	CONNORS STATE COLLEGE	WARNER, OK	4278303	CSC PATRICIA 7-3L	FF POACHER 700E	2/26/23	9.8	85	71	70	104	75	5.2	80	18.8	90	9.7	90	0.17	85	-0.076	10	0.73	45	114	80	74	75
70546	PIPER STEELE	REPUBLIC, MO	4195695	STEELE LADY 28L	HARKERS UNLEASHED	2/22/23	10.2	80	65	85	98	85	4.5	85	23.1	60	12.5	70	0.39	45	-0.067	20	0.77	40	121	70	73	80
70548	RHOLTON BOUZIDEN	WAYNOKA, OK	4288883	FSC ALLEY 88L	HOLT KAMP CLAC CHANGE IS COMING	2/17/23	12.0	60	68	80	101	85	6.5	55	18.9	90	5.3	99	0.08	95	-0.086	5	0.57	75	93	99	67	95
70549	TUG KENNEDY	WAGONER, OK	4278503	MAIN S&S COPACETIC LADY	WLE COPACETIC E02	2/16/23	11.8	60	77	45	116	50	6.1	65	15.8	99	8.4	95	0.08	95	-0.062	20	0.77	40	103	95	72	80
70550	CR 6 CATTLE	EDGERTON, OH	4265421	CR6 MISS DIAMONDS N PEARLS	TJSC KING OF DIAMONDS	2/13/23	12.4	55	62	95	90	95	5.6	70	22.5	65	10.8	85	0.07	95	-0.070	20	0.71	50	101	95	63	99
70551	CIRCLE M FARMS & ROCKING P LIVESTOCK	MAYSVILLE, KY	4237034	RP/CMFM STYLISH LOVE L007	SJW EXIT 44 7111E	2/12/23	10.5	80	79	35	119	45	6.3	60	18.0	95	13.9	60	0.17	85	-0.065	20	0.76	40	117	75	75	70
70552	FERGUSON CATTLE CO	MENTOR, OH	4237058	FSCI MS EMOTION L276	SILVEIRAS STYLE 9303	2/10/23	12.7	50	64	90	96	90	6.2	60	15.6	99	15.8	35	0.25	70	-0.024	70	0.58	70	123	65	69	90
70554	ABIGAIL PORTE	CHARLO, MT	4228117	KMG'S RUBYS LOVER	THSF LOVER BOY B33	2/10/23	14.5	30	73	60	109	70	7.3	45	25.6	40	12.5	70	0.44	40	-0.024	70	0.53	80	135	45	82	45
70557	RILEY SCHAFFER	STROUD, OK	4275985	HARKERS TRIXIE 0105 L105	W/C RELENTLESS 32C	2/5/23	9.1	90	69	75	98	85	3.9	90	18.5	90	8.7	95	0.23	75	-0.066	20	1.01	10	102	95	70	90
70559	MADLUKE CATTLE CO	ARCADIA, IN	4234118	MLCC BANDY MAID L01W	MLCC SIMPATICO H71D	2/2/23	10.3	80	72	65	106	75	4.7	85	20.8	80	11.8	80	0.25	70	-0.062	20	0.45	90	112	85	72	80

Champion Junior Heifer Calf _____
Reserve Champion Junior Heifer Calf _____

Class 6: Percentage Simmental Heifers, Born January 2023

70561	SOFIA SIRI	FORESTVILLE, CA	4213293	SKSW MS PLAYMATE 2305L	WLE COPACETIC E02	1/29/23	14.1	35	76	50	115	55	7.4	40	17.4	95	10.5	85	0.16	85	-0.066	20	0.84	30	116	75	76	70
70563	HANNAH FRENCH	WAKEMAN, OH	4255505	LMAN MISS BROKERS 11L ET	WLE COPACETIC E02	1/12/23	7.7	95	78	40	113	60	3.1	95	18.8	90	6.4	99	-0.08	99	-0.072	10	0.83	30	80	99	65	95
70564	ELLIE DRACH	PONTIAC, IL	4208981	NXT LEGACY L305	W/C STYLE 69E	1/4/23	12.2	55	64	90	93	95	4.8	85	19.2	90	11.4	80	0.16	85	-0.050	45	0.72	45	110	85	68	95
70565	KATIE HAYSMER	MCCLOUD, OK	4237085	L/S LADY LUCK L5105	WLE COPACETIC E02	1/4/23	15.1	25	72	65	105	75	7.8	35	20.0	85	11.5	80	0.14	90	-0.080	10	0.77	40	118	75	74	75

Place	Tag	Exhibitor	Hometown	ASA No.	Animal Name	Sire	DOB	CE	%	WW	%	YW	%	MCE	%	Milk	%	STAY	%	MB	%	BF	%	REA	%	\$API	%	\$TI	%	GE
-------	-----	-----------	----------	---------	-------------	------	-----	----	---	----	---	----	---	-----	---	------	---	------	---	----	---	----	---	-----	---	-------	---	------	---	----

Class 7: Percentage Simmental Heifers, Born November - December 2022

70567	COLE GLICK	LA PRAIRIE, IL	4197959	LCMISSKASI	GEFF COUNTY O	12/10/22	7.7	95	65	90	98	85	2.8	99	12.4	99	9.9	90	0.27	65	-0.035	60	0.61	65	106	90	68	90
70569	MORGAN JACKSON	KAUFMAN, TX	4220212	XTB LITTLE RED WAGON K094	NI LOCK IN	11/21/22	10.6	75	77	45	118	50	6.7	55	22.9	60	14.2	55	0.13	90	-0.029	70	0.64	60	116	80	74	75
70571	AUGUSTUS RYE	ERIN, TN	4227863	TYLERTOWN WENDY	LLSF VANTAGE POINT F398	11/10/22	9.7	85	66	85	100	85	3.4	95	17.3	95	7.0	99	0.29	65	-0.067	20	0.70	50	105	90	71	85
70572	WESLEY PHILLIPS	STANTON, TX	4224227	PFCS LUCY K250	JSUL SOMETHING ABOUT MARY 8421	11/1/22	12.6	50	74	60	114	55	6.0	65	17.4	95	12.3	75	0.34	55	-0.008	90	0.35	95	124	65	76	70

Class 8: Percentage Simmental Heifers, Born September - October 2022

70573	DARCI LAMLEE	ISABELLA, OK	4174439	JSUL PCC CRYSTAL'S WICK 2528K	JBSF BERWICK 41F	10/27/22	10.9	75	73	60	109	65	4.9	80	21.9	70	10.7	85	0.18	85	-0.047	45	0.64	60	109	90	72	80
70575	MARLEY GODWIN	PRESCOTT, AR	4190511	JSUL HONEY 2580K	W/C BANKROLL 811D	10/13/22	9.9	85	72	65	105	75	4.9	80	17.8	95	11.3	80	0.26	70	-0.062	20	0.91	20	111	85	72	80
70576	ADDISON WARD	OAK GROVE, MO	4176849	WALLACE LADY 2159K	SJW EXIT 44 7111E	10/12/22	11.8	60	74	60	116	50	7.7	35	24.7	45	12.0	75	0.24	75	-0.023	70	0.78	35	119	75	76	70
70577	RUDI KNOLL	GARBER, OK	4224327	HONEY LIMIT	S&S TSSC LIMITLESS 041H	10/10/22	7.4	99	70	70	108	70	2.2	99	13.4	99	10.9	85	0.30	60	-0.035	60	0.50	85	109	90	70	85
70578	WYATT PHILLIPS	MAYSVILLE, KY	4176843	WALLACE MIGNONNE 2145K	SJW EXIT 44 7111E	10/4/22	12.1	60	66	85	104	80	6.0	65	22.5	65	11.3	80	0.14	90	-0.029	70	0.64	60	113	80	70	85
70579	JULIA HARRIS	STILLWATER, OK	4209099	MS KAYENNE	GEFF COUNTY O	10/4/22	7.7	95	65	90	98	85	2.8	99	12.4	99	9.9	90	0.27	65	-0.035	60	0.61	65	106	90	68	90
70580	ZOEY COTTRELL	LAWTON, OK	4192678	JSUL REBA 2515K	THSF LOVER BOY B33	9/28/22	10.6	75	77	45	117	50	4.7	85	24.3	50	15.7	40	0.27	65	-0.050	45	0.70	50	125	65	77	65
70581	BRET PEMBROOK	FAIRVIEW, OK	4193975	JSUL PCC DAT DARLIN 2554K	JBSF BERWICK 41F	9/27/22	12.0	60	71	65	105	75	6.5	55	20.2	85	7.1	99	0.27	65	-0.031	60	0.57	75	103	95	70	85
70585	CUTTER WILLHOUR	INOLA, OK	4174446	JSUL PCC WHO DAT 2501K	JSUL SOMETHING ABOUT MARY 8421	9/2/22	10.4	80	71	65	109	65	2.5	99	16.1	99	8.8	95	0.19	80	-0.021	70	0.69	55	102	95	69	90

Champion Senior Heifer Calf _____
Reserve Champion Senior Heifer Calf _____

Class 9: Percentage Simmental Heifers, Born May - June 2022

70586	CARLEE McCRACKEN	ALVA, OK	4126837	RJ LORI 228K	TRCC PANDEMIC	6/12/22	10.4	80	69	75	102	80	5.9	70	19.5	85	7.5	99	0.07	95	-0.069	20	0.74	45	92	99	65	95
70587	GRACIN JONES	MCCLOUD, OK	4181588	PMTM ECS SANDY K247	LLSF PAYS TO BELIEVE ZU194	6/3/22	7.4	99	74	55	117	50	4.4	90	19.5	85	11.5	80	0.46	35	-0.005	90	0.47	85	121	70	78	60
70588	JOLIE BRYSON	FORESTBURG, TX	4101430	PFCS LUCY K249	JSUL SOMETHING ABOUT MARY 8421	5/17/22	12.6	50	74	60	114	55	6.0	65	17.4	95	12.3	75	0.34	55	-0.008	90	0.35	95	124	65	76	70
70589	CONNORS STATE COLLEGE	WARNER, OK	4117931	CSC 43-2K BIRDIE	FF COPACETIC 9478G	5/15/22	13.1	45	59	95	81	99	7.7	35	17.6	95	6.6	99	0.14	90	-0.075	10	0.46	90	108	90	68	90
70590	CHLOEE CLARK	MULDROW, OK	4118573	B C R TIME TO SHINE 106K	SCC SCH 24 KARAT 838	5/5/22	9.5	85	75	50	112	60	4.2	90	23.8	55	11.5	80	0.23	75	-0.022	70	0.58	70	111	85	74	75
70591	MACEE McNEFF	MUSTANG, OK	4127748	MISS LYDIA K200	GEFF COUNTY O	5/1/22	6.1	99	74	55	108	70	3.5	95	13.3	99	15.2	45	0.16	85	-0.059	30	0.69	55	108	90	69	90

Champion Intermediate Heifer _____
Reserve Champion Intermediate Heifer _____

Place	Tag	Exhibitor	Hometown	ASA No.	Animal Name	Sire	DOB	CE	%	WW	%	YW	%	MCE	%	Milk	%	STAY	%	MB	%	BF	%	REA	%	\$API	%	\$TI	%	GE
-------	-----	-----------	----------	---------	-------------	------	-----	----	---	----	---	----	---	-----	---	------	---	------	---	----	---	----	---	-----	---	-------	---	------	---	----

Class 10: Percentage Simmental Heifers, Born March - April 2022

70592	BAILEY WADLOW and ADCOCK LAND & LIVESTOCK	JERSEYVILLE, IL	4149066	FRKG DUTCHESS 254K ET	EC REBEL 156F	4/29/22	7.0	99	78	40	118	50	3.4	95	14.0	99	11.2	85	0.00	99	-0.056	30	0.59	70	94	99	67	95
70594	SHELBY CANDLER	WEAVERVILLE, NC	4163774	PUGH SOMETHING ABOUT AVA K27ET	JSUL SOMETHING ABOUT MARY 8421	4/21/22	11.3	70	75	50	119	45	6.0	65	19.7	85	10.0	90	0.23	75	-0.010	90	0.53	80	113	80	75	70
70596	WALTHER SIMMENTALS	CENTERVILLE, IN	4102372	WALTHER KAGNEY 243K	PVF BLACKLIST 7077	4/15/22	9.2	90	71	70	96	90	1.3	99	23.0	60	13.4	65	0.10	95	-0.045	45	0.51	80	104	95	67	95
70598	SARA SULLIVAN	DUNLAP, IA	4096888	STCC NOBODY'S FOOL 047K	SCC SCH 24 KARAT 838	4/2/22	5.4	99	80	35	123	35	1.9	99	25.3	40	9.9	90	0.15	85	-0.047	45	0.79	35	98	95	72	80
70602	ALIVIA SWEENEY	VINTON, IA	4159738	B C R BEAUTIFUL 310K	SCC SCH 24 KARAT 838	3/28/22	5.7	99	73	60	116	55	0.8	99	24.8	45	11.4	80	0.00	99	-0.030	70	0.83	30	93	99	66	95
70607	JESSICA HOBAUGH	BLACKWELL, OK	4134292	M F HAZEL 225K	GEFF COUNTY O	3/16/22	7.1	99	76	50	117	50	2.9	99	13.0	99	15.2	45	0.19	80	-0.039	60	0.89	20	114	80	72	80
70608	CALI BALDWIN	WINCHESTER, IN	4098658	JSUL TSSC LEAPIN GIRL 2327K	HPF QUANTUM LEAP Z952	3/15/22	11.9	60	67	80	100	85	4.8	85	16.6	99	7.1	99	0.35	50	-0.058	30	0.70	50	111	85	73	80
70609	HAYES RICKSTREW	WAMEGO, KS	4086582	JBOY TAMMY 242K	MR HOC BROKER	3/15/22	3.5	99	62	90	89	95	-0.3	99	21.7	70	7.6	99	-0.12	99	-0.061	20	0.61	65	68	99	54	99
70610	CONNORS STATE COLLEGE	WARNER, OK	4177349	CSC COWGIRL 33-2K	FF COPACETIC 9478G	3/8/22	13.5	40	54	99	76	99	8.1	30	18.5	90	6.6	99	0.20	80	-0.058	30	0.39	95	100	95	63	99

Class 11: Percentage Simmental Heifers, Born January - February 2022

70611	TURNER LONGACRE	KELLYVILLE, OK	4134329	RJ LADY KILLER 244K	W/C VIP 005G	2/27/22	9.0	90	73	65	104	75	4.2	90	18.8	90	7.7	99	0.01	99	-0.080	10	1.16	4	88	99	66	95
70612	CARLEE McCracken	ALVA, OK	4090892	MAXINE	W/C RELENTLESS 32C	2/22/22	10.6	75	76	50	112	60	5.8	70	18.7	90	8.5	95	0.34	55	-0.014	85	0.69	55	114	80	77	65
70616	CONNORS STATE COLLEGE	WARNER, OK	4117927	CSC 21-2K LORETTA	FF POACHER 700E	2/18/22	11.7	65	70	75	103	80	6.2	60	14.9	99	10.8	85	0.22	75	-0.070	20	0.73	45	112	85	71	85
70617	HOUSTON FERREE	SULLIVAN, IN	4101052	STER BROKER'S PHYLLISITY 22K	MR HOC BROKER	2/17/22	7.0	99	75	55	117	50	4.4	90	20.6	80	9.1	95	0.05	99	-0.031	60	0.54	80	91	99	67	95
70619	CONNORS STATE COLLEGE	WARNER, OK	4117923	CSC 17-2K ROYAL	FF POACHER 700E	2/16/22	11.6	65	68	80	100	85	6.3	60	18.8	90	9.7	90	0.17	85	-0.076	10	0.73	45	117	75	74	75
70622	KATIE HAYSMER	MCCLOUD, OK	4098787	L/S SANDY K1411	OBCC CMFM DEPLORABULL D148	2/6/22	12.0	60	75	55	114	55	6.3	60	22.7	65	9.3	95	0.17	85	-0.040	60	0.77	40	111	85	75	70
70628	CHRISTIAN SIEGEL	CALIFORNIA, MO	4101061	T-T BLACKBIRD K003	W/C BANKROLL 811D	1/5/22	8.0	95	79	40	121	40	4.6	85	22.4	65	10.5	85	0.33	55	-0.022	70	0.81	30	114	80	78	60
70630	SARA SULLIVAN	DUNLAP, IA	4082442	RBS BLOWN AWAY K208	PRIMETIME	1/2/22	5.2	99	69	75	101	85	1.0	99	16.3	99	11.4	80	0.16	85	-0.038	60	0.59	70	96	99	65	95

Champion Junior Heifer _____
Reserve Champion Junior Heifer _____

Class 12: Percentage Simmental Heifers, Born October 2021

70632	KAITLYN HOLBROOK	ERIN, TN	4134618	HOLBROOK'S LOADED UP PUP	MBG MR BLK STUD	10/15/21	6.9	99	68	80	102	80	3.9	90	18.4	90	10.8	85	0.17	85	-0.060	30	0.61	65	99	95	66	95
-------	------------------	----------	---------	--------------------------	-----------------	----------	-----	----	----	----	-----	----	-----	----	------	----	------	----	------	----	--------	----	------	----	----	----	----	----

Champion Senior Heifer _____
GRAND CHAMPION PERCENTAGE SIMMENTAL HEIFER _____
RESERVE CHAMPION PERCENTAGE SIMMENTAL HEIFER _____



**2023-24 PTP RING OF CHAMPIONS
PEOPLE'S CHOICE AWARDS**

Scan to Vote

Place	Tag	Exhibitor	Hometown	ASA No.	Animal Name	Sire	DOB	CE	%	WW	%	YW	%	MCE	%	Milk	%	STAY	%	MB	%	BF	%	REA	%	\$API	%	\$TI	%	GE
-------	-----	-----------	----------	---------	-------------	------	-----	----	---	----	---	----	---	-----	---	------	---	------	---	----	---	----	---	-----	---	-------	---	------	---	----

Class 13: Percentage Simmental Bulls, Born June 2023

70633	RILEY MARTIN	TAYLORSVILLE, KY	4283837	JT-MF REWIRED	W/C FORT KNOX 69H HARDWIRE	6/4/23	10.4	80	69	75	100	85	4.2	90	18.8	90	9.2	95	0.17	85	-0.065	20	0.81	30	103	95	69	90
-------	--------------	------------------	---------	---------------	----------------------------	--------	------	----	----	----	-----	----	-----	----	------	----	-----	----	------	----	--------	----	------	----	-----	----	----	----

Class 14: Percentage Simmental Bulls, Born March - April 2023

70635	KREAS RICHARD	BLANCHARD, OK	4216305	RAC LOADED PEACE 302L	MR PEACEMAKER 042H	4/27/23	12.6	50	64	90	94	90	6.4	60	21.6	70	14.3	55	0.17	85	-0.038	60	0.45	90	118	75	69	90
70636	MORGAN MCKAY	HOLLY, MI	4236181	SMCK MR DUTTON ET	JSUL SOMETHING ABOUT MARY 8421	4/26/23	10.7	75	64	90	100	85	3.1	95	16.3	99	12.0	75	0.14	90	-0.048	45	0.71	50	105	90	64	99
70637	ASHLYN KNEIB	FLORENCE, MT	4194486	MW- BENTLEY STYLE	KSIG STEELIN HIS STYLE	4/14/23	8.6	95	70	75	108	70	3.6	95	17.2	95	11.0	85	0.29	65	-0.043	45	0.50	85	111	85	71	85
70639	MADISON LOSCHKE	KINGSDOWN, KS	4274924	MKL BOY NAMED SIOUX 3218L	WLE COPACETIC E02	4/10/23	10.5	80	82	25	125	35	5.1	80	16.3	99	8.6	95	0.13	90	-0.099	2	0.85	25	104	95	75	70
70640	4K SHOW CATTLE	DECKERVILLE, MI	4255123	4KSC UPSIDE	WHF/JS/CCS DOUBLE UP G365	4/3/23	10.7	75	79	40	111	65	4.3	90	17.9	95	11.6	80	0.04	99	-0.063	20	0.77	40	104	90	72	80
70642	JESSICA HOBAUGH	BLACKWELL, OK	4233473	HOBC RED CAYENNE	THSF LOVER BOY B33	3/8/23	10.9	75	65	90	88	95	5.3	75	21.3	75	8.9	95	0.20	80	-0.066	20	0.52	80	105	90	69	90

Champion Spring Bull Calf _____

Reserve Champion Spring Bull Calf _____

Class 15: Percentage Simmental Bulls, Born January 2023

70646	ADCOCK LAND & LIVESTOCK	MOWEAQUA, IL	4228420	ALL JUSTIFY 303L	WLE COPACETIC E02	1/31/23	11.9	60	78	40	111	65	6.1	65	16.5	99	10.1	90	0.09	95	-0.058	30	0.78	35	108	90	73	75
70647	CHASE HARKER	HOPE, IN	4246008	HARKERS MEDICINE MAN	SO REMEDY 7F	1/24/23	11.0	75	72	65	117	50	4.7	85	17.4	95	9.3	95	0.04	99	-0.085	5	1.00	10	101	95	69	90

Champion Junior Bull Calf _____

Reserve Champion Junior Bull Calf _____

Class 16: Percentage Simmental Bulls, Born October 2022

70652	OWEN BROS CATTLE CO	BOIS D ARC, MO	4227348	OBCC SAM K1AF	JSUL SOMETHING ABOUT MARY 8421	10/20/22	15.2	25	71	65	111	65	6.7	55	18.8	90	11.0	85	0.19	80	-0.030	70	0.65	60	119	70	74	75
70653	CIRCLE M FARMS & ROCKING P LIVESTOCK	MAYSVILLE, KY	4190364	RP/CMFM ANTE UP K084	SILVEIRAS FORBES 8088	10/15/22	9.5	85	76	50	115	55	2.7	99	18.6	90	7.9	99	0.49	30	-0.020	85	0.50	85	117	75	79	55

Champion Senior Bull Calf _____

Reserve Champion Senior Bull Calf _____

Class 17: Percentage Simmental Bulls, Born May 2022

70654	RAEDAWN GENETICS	OKLAHOMA CITY, OK	4132972	CKOR FTZS VITAL 209K	THSF LOVER BOY B33	5/7/22	10.4	80	77	45	114	55	4.0	90	22.9	60	13.4	65	0.30	60	-0.049	45	0.55	75	122	70	77	60
-------	------------------	-------------------	---------	----------------------	--------------------	--------	------	----	----	----	-----	----	-----	----	------	----	------	----	------	----	--------	----	------	----	-----	----	----	----

Champion Intermediate Bull _____

Class 18: Percentage Simmental Bulls, Born January 2022

70655	DIAMOND J SIMMENTALS	KAUFMAN, TX	4144458	INSURRECTION	W/C STYLE 69E	1/6/22	10.8	75	65	85	99	85	4.8	85	22.4	65	14.1	55	0.35	50	-0.084	5	0.64	60	122	70	71	85
70656	KALE ROBISON	CUSHING, OK	4040771	SKR RIP K22	MR HOC BROKER	1/2/22	5.6	99	62	95	86	99	0.4	99	15.5	99	7.1	99	0.10	95	-0.036	60	0.48	85	82	99	59	99

Champion Junior Bull _____

Reserve Champion Junior Bull _____

Class 19: Percentage Simmental Bulls, Born September - October 2021

70657	RED RIVER FARMS - CIRCLE M FARMS - ROCKING P LIVESTOCK	GRAND SALINE, TX	4109070	RP/CMFM JOHN B J104	HPF QUANTUM LEAP Z952	10/1/21	8.6	95	92	10	141	10	2.8	99	14.8	99	8.4	95	0.17	85	-0.076	10	0.77	40	104	95	79	55
70658	JS SIMMENTALS & WAYWARD HILL FARM	PRAIRIE CITY, IA	4068398	WHF/JS/CCS WOODFORD J001	EGL FIRESTEEL 103F	9/21/21	12.8	50	85	20	120	45	3.9	90	21.9	70	19.4	10	0.40	45	-0.046	45	0.55	75	148	25	87	30

Champion Senior Bull _____

Reserve Champion Senior Bull _____

GRAND CHAMPION PERCENTAGE SIMMENTAL BULL _____

RESERVE CHAMPION PERCENTAGE SIMMENTAL BULL _____

2024 Cattlemen's Congress Open Purebred Simmental Show								Purebred Simmental EPD Averages and Percentile Ranks																						
								EPD Averages		11.2		77		115		5.7		22.9		15.4		0.15		-0.07		0.87		131		79
Place	Tag	Exhibitor	Hometown	ASA No.	Animal Name	Sire	DOB	CE	%	WW	%	YW	%	MCE	%	Milk	%	Stay	%	MB	%	BF	%	REA	%	\$API	%	\$TI	%	GE

Class 20: Purebred Simmental Bulls, Born May 2023

70663	RYLEE WILLIAMS	TECUMSEH, OK	4267821	WAA THE REAL CASANOVA 107L	ETR GCC REAL TIME G380	5/25/23	6.5	95	72	75	103	80	3.5	90	18.2	90	11.4	90	0.11	65	-0.080	50	0.72	85	107	95	70	90
-------	----------------	--------------	---------	----------------------------	------------------------	---------	-----	----	----	----	-----	----	-----	----	------	----	------	----	------	----	--------	----	------	----	-----	----	----	----

Class 21: Purebred Simmental Bulls, Born March - April 2023

70666	CR 6 CATTLE	EDGERTON, OH	4283884	CR6 MR BLAZE	THSF LOVER BOY B33	4/13/23	11.0	55	83	30	115	50	5.7	55	23.8	45	13.4	75	0.31	25	-0.078	50	0.79	70	137	40	87	25
70668	ADCOCK LAND & LIVESTOCK	MOWEAQUA, IL	4228423	ALL AFFIRMED 333L	EC REBEL 156F	3/28/23	8.2	90	85	25	121	40	2.9	95	16.0	95	14.7	60	-0.08	99	-0.100	15	0.84	60	109	95	73	80
70670	RICHBURG CATTLE CO	GROOM, TX	4244029	JARR LANDSHARK L302	WLE COPACETIC E02	3/15/23	9.7	75	75	60	111	60	4.0	85	16.3	95	10.0	95	-0.04	95	-0.083	30	0.88	50	107	95	72	85
70671	MADLUKE CATTLE CO & ROCKING H SIMMENTALS	ARCADIA, IN	4216252	MLCC/RCKH SYNCHRONICITY 31L	MLCC SIMPATICO H71D	3/12/23	10.2	70	74	65	107	70	4.2	80	16.6	95	12.3	80	0.03	80	-0.087	30	0.67	90	114	85	72	85
70672	ELLIE DRACH	PONTIAC, IL	4283841	NXT ANTE UP L312	WHF/JS/CCS DOUBLE UP G365	3/10/23	9.0	80	81	35	108	70	2.9	95	18.3	90	11.2	90	-0.05	95	-0.077	50	0.97	30	105	99	73	80
70675	WALTHER SIMMENTALS	CENTERVILLE, IN	4236197	WALTHER LEADOFF 70L	WLE COPACETIC E02	3/9/23	12.4	35	76	60	113	55	5.5	60	17.3	95	7.5	99	0.10	65	-0.111	2	0.90	45	117	80	79	55
70676	HAYES RICKSTREW	WAMEGO, KS	4214186	RICKSTREW LEGACY 078L	W/C RELENTLESS 32C	3/2/23	11.9	45	68	85	86	99	4.4	80	17.1	95	13.2	75	0.24	35	-0.070	70	0.84	60	125	65	74	75

Champion Spring Bull Calf _____
Reserve Champion Spring Bull Calf _____

Class 22: Purebred Simmental Bulls, Born January - February 2023

70677	ELLIE DRACH	PONTIAC, IL	4283840	NXT YETI L309	W/C RELENTLESS 32C	2/24/23	9.3	80	71	80	94	95	2.5	95	17.8	90	10.4	95	0.08	70	-0.079	50	0.82	65	107	95	70	90
70678	McKALYNNE HELMKE	NEW PHILADELPHIA, OH	4212583	WISE-ONE EYED WILLIE	W/C LOADED UP 1119Y	2/22/23	9.5	75	69	85	100	85	5.6	55	19.7	80	12.9	75	-0.04	95	-0.084	30	0.84	60	108	95	67	95
70680	JACEY MASSEY	BOLEY, OK	4268794	NEW TREND STAY TUNED 9L	LKCC BOLD VENTURE 194F	2/9/23	12.7	30	78	45	110	65	4.3	80	18.0	90	10.9	90	0.05	75	-0.096	15	0.70	90	117	80	76	65
70681	RHETT KEATON	ANDERSON, MO	4264538	5KCC KING OF DIAMONDS L305	TJSC KING OF DIAMONDS	1/28/23	9.8	75	76	55	103	80	5.1	65	21.4	65	8.6	99	-0.17	99	-0.094	15	1.38	1	93	99	68	95
70683	CR 6 CATTLE	EDGERTON, OH	4261908	LMSF CASH IN L10E	W/C FORT KNOX 609F	1/24/23	11.4	50	70	80	107	70	5.4	60	23.4	50	11.1	90	0.21	40	-0.057	85	0.90	45	125	65	78	60

Champion Junior Bull Calf _____
Reserve Champion Junior Bull Calf _____

Class 23: Purebred Simmental Bulls, Born September - October 2022

70687	WILL HEAVNER	PEARL, IL	4175877	HVNR MATTER OF DESTINY K20	HPF QUANTUM LEAP Z952	10/21/22	12.4	35	78	50	113	55	5.1	65	18.3	90	9.0	99	0.08	70	-0.074	50	0.82	65	115	85	77	65
70690	WILL HEAVNER	PEARL, IL	4283953	HVNR REDBULL K88H	MR HOC BROKER	9/25/22	7.7	90	73	70	104	75	3.3	90	17.4	90	9.9	95	-0.13	99	-0.084	30	0.72	85	94	99	66	99
70691	EASTON CHAMBERLIN	COLE CAMP, MO	4177210	OZPF RUTHLESS 839H K25	W/C RELENTLESS 32C	9/4/22	11.3	50	74	65	107	70	4.5	75	15.9	95	13.5	70	0.31	25	-0.067	70	0.87	55	135	45	80	50

Champion Senior Bull Calf _____
Reserve Champion Senior Bull Calf _____

Class 24: Purebred Simmental Bulls, Born April 2022

70693	JS SIMMENTALS & WOODLAWN SHOW CATTLE	PRAIRIE CITY, IA	4178795	WLSF FIREHOUSE 911K	WHF/JS/CCS DOUBLE UP G365	4/10/22	12.9	30	82	35	117	50	5.7	55	16.3	95	11.6	90	-0.08	99	-0.050	95	1.01	25	113	85	75	70
-------	--------------------------------------	------------------	---------	---------------------	---------------------------	---------	------	----	----	----	-----	----	-----	----	------	----	------	----	-------	----	--------	----	------	----	-----	----	----	----

Class 25: Purebred Simmental Bulls, Born January 2022

70695	JONES SHOW CATTLE - ELMORE CATTLE SERVICES - DIAMOND J SIMMENTALS - XT B CATTLE CO - MINNAERT SHOW CATTLE	WAUKOMIS, OK	4103854	TJSC COPING WITH DESTINY 9K	WLE COPACETIC E02	1/7/22	9.8	75	82	35	119	45	4.5	75	17.8	90	13.1	75	-0.12	99	-0.089	30	0.81	65	108	95	72	85
-------	---	--------------	---------	-----------------------------	-------------------	--------	-----	----	----	----	-----	----	-----	----	------	----	------	----	-------	----	--------	----	------	----	-----	----	----	----

Champion Junior Bull _____
Reserve Champion Junior Bull _____

Place	Tag	Exhibitor	Hometown	ASA No.	Animal Name	Sire	DOB	CE	%	WW	%	YW	%	MCE	%	Milk	%	STAY	%	MB	%	BF	%	REA	%	\$API	%	\$TI	%	GE
-------	-----	-----------	----------	---------	-------------	------	-----	----	---	----	---	----	---	-----	---	------	---	------	---	----	---	----	---	-----	---	-------	---	------	---	----

Class 26: Purebred Simmental Bulls, Born September - November 2021

70696	TC REDS & SUNSET OAKS SIMMENTALS	RINGLE, WI	4035943	SO REMNANT 418J	SO REMEDY 7F	11/4/21	13.6	25	84	25	132	20	4.2	80	16.7	95	9.7	99	-0.15	99	-0.072	50	0.98	30	111	90	76	65	GE
70697	THREE ACES CATTLE CO - WAYWARD HILL FARM - JARED WERNING CATTLE - ROSEBUD CATTLE CO	VERSAILLES, KY	4068397	WHF GREATER GOOD J45	KCC1 EXCLUSIVE 116E	9/18/21	15.1	10	87	20	123	35	6.2	45	12.1	99	9.8	99	0.13	60	-0.107	5	1.15	10	129	55	86	30	GE

Champion Senior Bull _____
Reserve Champion Senior Bull _____

GRAND CHAMPION PUREBRED SIMMENTAL BULL _____
RESERVE CHAMPION PUREBRED SIMMENTAL BULL _____

Class 27: Purebred Simmental Pairs

70700	LARAMIE SASSER	EDMOND, OK	3933611	VCL SENSATION 251J	SO REMEDY 7F	4/20/21	12.3	40	72	75	110	65	4.6	75	17.2	95	9.7	99	0.12	60	-0.079	50	0.77	75	117	80	74	75	
			4219577	L/S SENSATION 251L	HPF QUANTUM LEAP Z952	6/25/23	12.4	35	79	45	117	50	4.4	80	16.6	95	7.5	99	0.11	65	-0.091	15	0.87	55	115	85	79	55	

Cow/calf data is listed on two lines per entry, with the cow first.

GRAND CHAMPION PUREBRED SIMMENTAL PAIR _____

Class 28: Purebred Simmental Heifers, Born June 2023

70701	LARAMIE SASSER	EDMOND, OK	4219577	L/S SENSATION 251L	HPF QUANTUM LEAP Z952	6/25/23	12.4	35	79	45	117	50	4.4	80	16.6	95	7.5	99	0.11	65	-0.091	15	0.87	55	115	85	79	55	
70702	EASTON CHAMBERLIN	COLE CAMP, MO	4260553	LAA MISS EBONY 376L	JSUL SOMETHING ABOUT MARY 8421	6/20/23	11.8	45	69	85	100	85	5.0	65	19.9	80	12.2	85	-0.02	90	-0.072	50	0.91	45	111	90	68	95	
70875	SADIE PLAGG	GUTHRIE, OK	4241556	MISS PC VELMA 623	WHF/JS/CCS DOUBLE UP G365	6/2/23	11.1	55	85	25	122	35	3.8	85	17.9	90	8.5	99	-0.02	90	-0.109	5	1.30	2	108	95	77	60	GE

Class 29: Purebred Simmental Heifers, Born May 2023

70876	SADIE PLAGG	GUTHRIE, OK	4241555	MISS PC BETTY 523	TRCC PANDEMIC	5/18/23	9.8	75	77	50	117	50	4.3	80	19.2	85	7.2	99	-0.07	95	-0.108	5	0.97	30	99	99	72	85	GE
70709	CHARLEY MACH	YUKON, OK	4255065	VCL COUNTESS 113L OUT OF 253	SO REMEDY 7F	5/6/23	11.5	50	82	35	125	30	5.3	60	14.1	99	12.2	85	-0.03	90	-0.103	5	0.94	40	113	85	74	75	
70710	GLENNYS McGURK	KINGMAN, IN	4232506	HORSTMAN LAH LOLA 360L	WHF/JS/CCS DOUBLE UP G365	5/5/23	11.7	45	88	15	127	30	5.7	55	18.4	90	11.5	90	-0.14	99	-0.073	50	0.99	30	111	90	77	60	
70711	BLAKE HENRICHS	OKARCHE, OK	4274843	MISS BH KALEY GAL L316	ROCKING P PRIVATE STOCK H010	5/4/23	12.1	40	72	70	109	65	6.1	45	20.4	75	14.3	65	0.07	75	-0.066	70	0.68	90	125	65	75	75	
70712	PRAIRIE VIEW CATTLE CO	JOHNSON, KS	4247155	G-S KITTY WELLS L26	SO REMEDY 7F	5/3/23	9.6	75	76	55	126	30	3.6	90	15.4	99	12.7	80	0.03	80	-0.094	15	0.94	40	118	80	75	75	
70713	ADDISON KENNEDY	WAGONER, OK	4242376	FLAR BECKY 307L ET	WLE COPACETIC E02	5/2/23	9.5	75	82	35	119	45	5.3	60	15.9	95	10.0	95	0.09	65	-0.090	30	0.86	55	114	85	78	60	
70714	DOUBLE IMAGE CATTLE CO	ATLANTA, IN	4258897	IAH SHELBY FLOWER L2744	WLE COPACETIC E02	5/2/23	13.0	30	70	80	100	85	6.4	40	16.0	95	13.1	75	0.09	65	-0.081	30	0.77	75	124	65	74	75	
70715	JOSLYN RICHTER	MORRIS, OK	4258926	L/S SAZERAC L301	OBCC CMFM DEPLORABULL D148	5/1/23	12.8	30	76	55	116	50	5.9	50	21.6	65	12.2	85	0.07	75	-0.071	50	0.83	65	126	60	79	55	

Class 30: Purebred Simmental Heifers, Born April 2023

70716	MATTHEW EDWARDS	YUKON, OK	4246340	XTB SAZERAC L387	WLE COPACETIC E02	4/26/23	13.4	25	77	50	112	60	7.4	25	16.0	95	10.2	95	0.10	65	-0.082	30	0.81	65	121	70	78	55	
70717	KALE ROBISON	CUSHING, OK	4282049	BTYL CHICKEN OF THE SEA 632L	JSUL SOMETHING ABOUT MARY 8421	4/26/23	11.9	45	76	55	116	50	5.3	60	17.9	90	10.4	95	0.06	75	-0.058	85	0.84	60	117	80	76	70	
70719	SADIE ROBISON	CUSHING, OK	4231571	SKR SIERRA L4	TL LEDGER	4/23/23	10.8	60	67	90	97	90	6.7	35	19.6	80	12.2	85	0.08	70	-0.078	50	0.56	99	116	85	71	90	
70724	WILL HEAVNER	PEARL, IL	4276832	JBSF LANA 04L	SO REMEDY 7F	4/19/23	13.4	25	75	60	119	45	6.1	45	18.2	90	12.4	80	-0.02	90	-0.075	50	0.89	50	119	75	74	75	
70726	PRAIRIE VIEW CATTLE CO	JOHNSON, KS	4263033	CTN LYDIA L686	SJF SMJ PAYROLL	4/17/23	9.3	80	72	75	100	85	6.5	40	24.7	40	13.0	75	0.21	40	-0.058	85	0.78	75	122	70	76	70	
70728	FERGUSON CATTLE CO	MENTOR, OH	4237064	FSCI MS GEMSTONE L300	W/C BET ON RED 481H	4/14/23	9.9	70	76	60	112	60	5.5	60	23.6	45	11.9	85	0.12	60	-0.068	70	0.97	30	121	75	78	60	
70729	SHEFFIELD RANCH	POOLVILLE, TX	4239481	RRF PRINCESS 305L	W/C RELENTLESS 32C	4/14/23	8.8	85	67	90	87	99	3.2	95	15.3	99	9.4	99	0.07	75	-0.061	70	0.75	80	102	99	67	99	
70731	MURRAY STATE COLLEGE	TISHOMINGO, OK	4236224	MISS PV LARKEN	W/C RELENTLESS 32C	4/11/23	12.5	35	70	80	91	95	5.4	60	18.4	90	13.8	70	0.06	75	-0.096	15	0.98	30	120	75	72	85	
70732	KAITLYN CLOUD	CARTHAGE, MO	4195539	CLOUD STICKY SWEET 75L	THSF LOVER BOY B33	4/3/23	13.6	25	79	45	116	50	6.3	45	24.0	45	13.5	70	0.23	40	-0.055	85	0.65	95	136	40	83	40	
70733	TYLER NORMAN	SEMINOLE, OK	4246149	JSUL ROSIE 3198L	JSUL SOMETHING ABOUT MARY 8421	4/3/23	11.3	50	78	50	119	45	4.0	85	18.7	85	12.5	80	0.05	75	-0.079	50	0.85	60	118	80	75	70	
70872	LILLY ASHER	GREENSBURG, IN	4238212	DIECKMANN TIME TO SHINE 555L	RECKONING 711F	4/1/23	10.3	65	69	85	92	95	3.8	85	18.9	85	14.8	60	0.21	40	-0.050	95	0.62	95	126	60	74	80	

Place	Tag	Exhibitor	Hometown	ASA No.	Animal Name	Sire	DOB	CE	%	WW	%	YW	%	MCE	%	Milk	%	STAY	%	MB	%	BF	%	REA	%	\$API	%	\$TI	%	GE
-------	-----	-----------	----------	---------	-------------	------	-----	----	---	----	---	----	---	-----	---	------	---	------	---	----	---	----	---	-----	---	-------	---	------	---	----

Class 31: Purebred Simmental Heifers, Born March 2023

70738	RICHBURG CATTLE CO	GROOM, TX	4244031	JARR MTZ LADY BIRDIE L304	JBSF BERWICK 41F	3/28/23	13.8	20	67	90	102	80	7.9	20	20.2	75	10.9	90	0.10	65	-0.052	85	0.62	95	118	80	71	90
70740	MADISON LOSCHKE	KINGSDOWN, KS	4268247	RATLIFF LUSCIOUS 308L	JSUL SOMETHING ABOUT MARY 8421	3/23/23	14.3	15	68	85	103	80	6.4	40	17.4	90	14.9	60	0.09	65	-0.068	70	0.67	90	128	60	72	85
70741	BLAKE HENRICHS	OKARCHE, OK	4239469	RRF JOY 027L	MR HOC BROKER	3/20/23	8.4	85	70	80	101	85	3.1	95	18.9	85	11.5	90	-0.05	95	-0.077	50	0.58	99	104	99	68	95
70742	SUTTON ZELLOW	JAY, OK	4245299	SFI MISS CHERRY CHEESECAKE	EC REBEL 156F	3/19/23	8.8	85	82	35	114	55	2.6	95	17.4	90	11.4	90	0.06	75	-0.074	50	0.81	65	111	90	75	70
70873	MORGAN JACKSON	KAUFMAN, TX	4256419	EVERHARTS BRANDY	SO REMEDY 7F	3/18/23	9.8	75	67	90	106	75	3.8	85	15.3	99	11.3	90	-0.12	99	-0.086	30	0.83	65	102	99	65	99
70743	TY KITZEROW	SAINT CHARLES, IA	4218498	DWYER CRYSTAL GAYLE 312L	W/C RELENTLESS 32C	3/13/23	9.3	80	64	95	88	99	3.5	90	15.7	99	11.7	85	0.11	65	-0.066	70	0.90	45	114	85	70	90
70744	LEXANDRIA CLEMONS	FAIR PLAY, MO	4248725	TESF LADY LIBERTY L14	HPF QUANTUM LEAP Z952	3/12/23	13.5	25	78	50	110	65	4.9	70	20.5	75	9.3	99	0.07	75	-0.092	15	0.96	35	118	80	78	60

Class 32: Purebred Simmental Heifers, Born March 2023

70746	DIANA DUNSTON	BELLEVUE, FL	4281966	RJ WEDDING BELLS 348L	W/C BANKROLL 811D	3/11/23	11.0	55	85	25	123	35	5.3	60	20.6	70	7.4	99	0.05	75	-0.087	30	1.17	10	111	90	81	45
70748	AUBREY NEAL	OSGOOD, IN	4282568	BF/BCII SELENA L127	NEXT LEVEL	3/10/23	9.0	80	88	20	130	25	3.5	90	20.0	75	12.5	80	0.08	70	-0.107	5	1.15	10	119	75	81	45
70749	RED RIVER FARMS	GRAND SALINE, TX	4239463	RRF MISS SHAWNEE 018L	ROCKING P PRIVATE STOCK H010	3/9/23	12.9	30	64	95	90	95	6.3	45	19.7	80	14.7	60	0.31	25	-0.065	70	0.46	99	137	40	77	65
70750	KADE HENRICHS	OKARCHE, OK	4258565	MS JH LYDIA L308	ROCKING P PRIVATE STOCK H010	3/9/23	10.9	60	72	75	104	75	4.7	75	18.7	85	12.6	80	0.18	45	-0.075	50	0.72	85	125	65	76	65
70754	LEVI BUCHANAN	WAXAHACHIE, TX	4269114	JSUL AMERICAN PRIDE 3195L	THSF LOVER BOY B33	3/5/23	10.8	60	78	50	110	65	4.2	80	26.3	25	11.4	90	0.24	35	-0.070	70	0.98	30	129	55	83	40
70755	EMMA CHAMBERLIN	COLE CAMP, MO	4209473	OZPF MISS KITTY UP J30 L36	WHF/JS/CCS DOUBLE UP G365	3/3/23	11.0	55	88	20	123	35	4.2	80	13.1	99	12.1	85	-0.03	90	-0.065	70	1.02	25	116	85	79	55
70757	KYLEE RICHARDSON	WAGONER, OK	4247206	JSUL RED ROSIE 32L	JSUL SOMETHING ABOUT MARY 8421	3/3/23	11.3	50	78	50	119	45	4.0	85	18.7	85	12.5	80	0.05	75	-0.079	50	0.85	60	118	80	75	70

Champion Spring Heifer Calf _____
Reserve Champion Spring Heifer Calf _____

Class 33: Purebred Simmental Heifers, Born February 2023

70759	KELBI FORRY	BLOSSOM, TX	4268684	CCS/JS/LFTZ SUMMER L403	W/C RELENTLESS 32C	2/27/23	7.7	90	80	40	108	70	3.3	90	17.1	95	11.7	85	0.01	85	-0.076	50	0.94	40	107	95	73	80
70760	SARA SULLIVAN	DUNLAP, IA	4276569	JSUL REBA 312L	JSUL SOMETHING ABOUT MARY 8421	2/26/23	11.5	50	81	40	125	30	4.5	75	20.2	75	13.4	75	0.08	70	-0.058	85	0.86	55	124	65	78	60
70761	KADE HENRICHS	OKARCHE, OK	4231227	CONLEY SHEZA STAR 301L	LKCC BOLD VENTURE 194F	2/25/23	11.9	45	67	90	88	99	4.9	70	17.2	95	13.8	70	0.06	75	-0.069	70	0.69	90	117	80	69	95
70763	ELLIE DRACH	PONTIAC, IL	4283839	NXT BLACK SATIN L306	W/C PASSWORD 28E	2/23/23	10.6	65	68	90	99	85	4.7	75	18.0	90	12.3	80	0.08	70	-0.080	50	1.00	25	115	85	71	90
70766	CR 6 CATTLE	EDGERTON, OH	4212817	CR6 MISS BET ON PATIENCE	W/C BET ON RED 481H	2/21/23	11.8	45	68	85	97	90	5.5	60	22.2	60	11.0	90	0.14	55	-0.077	50	0.99	30	118	80	73	80
70768	KENDALL RAAF	ROCKPORT, IN	4255315	KDP MISS HOYA ELSIE	JSUL SOMETHING ABOUT MARY 8421	2/20/23	12.3	40	75	65	109	65	6.2	45	19.2	85	13.9	70	0.07	75	-0.060	85	0.82	65	123	70	75	75
70769	GLENNYS MCGURK	KINGMAN, IN	4248383	JBSF LILY 327L	HOLTKAMP CLAC CHANGE IS COMING	2/19/23	12.3	40	82	30	125	30	5.3	60	17.5	90	8.6	99	-0.08	99	-0.105	5	0.90	45	107	95	75	70
70770	ELLIE HERT	LIBERTY HILL, TX	4272010	RJ WEDDING BELLS 346L	TRCC PANDEMIC	2/15/23	10.6	65	79	45	120	40	5.1	65	20.1	75	8.4	99	0.08	70	-0.089	30	0.86	55	113	85	78	60
70771	HANK HANZA	LAWTON, OK	4283936	KFFF HARLIES DIAMOND 134L	TJSC KING OF DIAMONDS	2/14/23	10.4	65	68	90	96	90	3.8	85	18.5	85	12.1	85	0.06	75	-0.087	30	0.93	40	114	85	70	90

Class 34: Purebred Simmental Heifers, Born February 2023

70772	CR 6 CATTLE	EDGERTON, OH	4288846	MISS ELLIE	WLE UNO MAS X549	2/13/23	10.6	65	59	99	80	99	3.1	95	17.8	90	11.3	90	0.24	35	-0.085	30	0.56	99	121	70	71	85
70773	CADEN STEEDMAN	QUINLAN, TX	4239215	RRF LOVING THE PROFIT 220L	ROCKING P PRIVATE STOCK H010	2/12/23	10.7	60	73	70	102	80	5.4	60	16.5	95	12.5	80	0.17	50	-0.075	50	0.62	95	124	65	77	65
70774	CAMBRIA COOK	CLOVIS, CA	4246153	JSUL MARY'S RECKONING 3299L	RECKONING 711F	2/12/23	9.1	80	68	90	98	90	3.0	95	18.4	90	13.2	75	0.04	80	-0.042	95	0.75	80	112	90	68	95
70775	RILEY MARTIN	TAYLORSVILLE, KY	4196624	JT-MF SERENITY	TJSC HAMMER TIME 35D	2/11/23	9.7	75	71	75	105	75	1.2	99	15.5	99	10.5	95	0.10	65	-0.076	50	0.94	40	113	90	73	80
70777	JUSTIN SLADE	HAVILAND, KS	4288472	HOLTKAMP ROSE BAILEY 379L	W/C BANKROLL 811D	2/10/23	9.1	80	80	40	113	55	4.2	80	19.0	85	11.7	85	0.02	85	-0.086	30	0.96	35	113	85	76	65
70778	BLAKE KITZMILLER	ELK GARDEN, WV	4239006	S&S TSSC SHE'S A FLIRT 3042	JSUL SOMETHING ABOUT MARY 8421	2/9/23	9.5	75	76	60	114	55	3.7	85	18.7	85	11.5	90	-0.08	99	-0.073	50	0.84	60	105	99	70	90
70779	MAKENNA HOPPA	FREMONT, MI	4243707	JSUL ROSIE 3103L	JSUL SOMETHING ABOUT MARY 8421	2/7/23	11.3	50	78	50	119	45	4.0	85	18.7	85	12.5	80	0.05	75	-0.079	50	0.85	60	118	80	75	70
70780	BUCK CREEK RANCH	YALE, OK	4258655	B C R TIME TO SHINE L034	RP/BCR EMINENCE H005	2/4/23	11.1	55	78	50	114	55	5.0	65	17.9	90	10.5	95	0.30	25	-0.074	50	0.65	95	130	55	83	40
70781	BEAU PORTER	WOOLDRIDGE, MO	4207305	5KCC YOLANDA L302	JSUL SOMETHING ABOUT MARY 8421	2/2/23	13.9	20	75	65	109	65	6.9	35	18.9	85	12.5	80	-0.04	95	-0.047	95	0.75	80	116	80	72	85

Place	Tag	Exhibitor	Hometown	ASA No.	Animal Name	Sire	DOB	CE	%	WW	%	YW	%	MCE	%	Milk	%	STAY	%	MB	%	BF	%	REA	%	\$API	%	\$TI	%	GE
-------	-----	-----------	----------	---------	-------------	------	-----	----	---	----	---	----	---	-----	---	------	---	------	---	----	---	----	---	-----	---	-------	---	------	---	----

Class 35: Purebred Simmental Heifers, Born January 2023

70783	JACEY MASSEY	BOLEY, OK	4187247	NEW TREND FIRST CLASS 6L	W/C RELENTLESS 32C	1/28/23	9.3	80	78	50	107	70	2.4	99	20.8	70	10.9	90	0.00	90	-0.101	5	1.05	20	106	95	72	85
70786	CR 6 CATTLE	EDGERTON, OH	4212818	CR6 SOMETHING ABOUT THE STARS	JSUL SOMETHING ABOUT MARY 8421	1/14/23	10.7	60	73	70	109	65	4.2	80	18.8	85	13.9	70	0.02	85	-0.063	70	0.81	65	117	80	71	85
70787	MARK MCLEMORE	KINGSTON, OK	4259689	4 - MC CALLEY L3013	ROCKING P PRIVATE STOCK H010	1/12/23	12.7	30	80	40	117	45	6.4	40	15.9	95	12.8	80	0.11	65	-0.079	50	0.84	60	127	60	79	50
70788	CAL PRYOR	WOODBINE, IA	4247104	R2C BAILEY 314L	WLE COPACETIC E02	1/11/23	9.6	75	82	30	121	40	4.2	80	15.8	99	12.0	85	0.02	85	-0.097	15	0.83	65	117	80	78	60
70789	ELI WALTHER	CENTERVILLE, IN	4243706	JSUL ROSIE 3133L	JSUL SOMETHING ABOUT MARY 8421	1/9/23	11.3	50	78	50	119	45	4.0	85	18.7	85	12.5	80	0.05	75	-0.079	50	0.85	60	118	80	75	70
70790	DIANAH DUNSTON	BELLEVIEW, FL	4248380	BRB4 JBSF LUCKY 123L	SO REMEDY 7F	1/9/23	9.6	75	80	40	123	35	3.2	95	13.4	99	10.2	95	-0.06	95	-0.100	15	0.86	55	106	95	73	80
70558	CIRCLE M FARMS	ROCKWALL, TX	4238079	CMFM WHEEL N DEAL L006	SO REMEDY 7F	1/8/23	13.4	25	75	60	119	45	6.1	45	18.2	90	12.4	80	-0.02	90	-0.075	50	0.89	50	119	75	74	75

Champion Junior Heifer Calf _____
Reserve Champion Junior Heifer Calf _____

Class 36: Purebred Simmental Heifers, Born November - December 2022

70793	REBECCA PURVINE	FAY, OK	4290863	RFP EXCESS DONNA 225K	LLSF EXCESS CASH E906	12/4/22	8.3	90	68	85	99	90	2.8	95	21.2	65	12.7	80	0.03	80	-0.067	70	0.94	40	110	95	69	95
70794	WILL HEAVNER	PEARL, IL	4263473	HVNR SAMANTHA ROSE K209	JSUL SOMETHING ABOUT MARY 8421	12/3/22	12.8	30	71	75	106	75	6.0	50	18.4	90	12.5	80	0.04	80	-0.066	70	0.80	70	118	80	72	85
70795	WHITE WING SIMMENTALS	HUNTINGTON, AR	4179258	JSUL ROSIE 2625K	JSUL SOMETHING ABOUT MARY 8421	11/30/22	11.3	50	78	50	119	45	4.0	85	18.7	85	12.5	80	0.05	75	-0.079	50	0.85	60	118	80	75	70
70796	WYATT DULANEY	STROUD, OK	4275952	TORIS TIME 126K	WLE COPACETIC E02	11/29/22	11.9	45	71	75	104	80	6.1	45	14.5	99	11.0	90	0.03	80	-0.087	30	0.73	85	115	85	72	85
70798	ZACHARY BUCHANAN	WAXAHACHIE, TX	4215501	JSUL ROSIE 2637K	JSUL SOMETHING ABOUT MARY 8421	11/18/22	11.3	50	78	50	119	45	4.0	85	18.7	85	12.5	80	0.05	75	-0.079	50	0.85	60	118	80	75	70
70799	MADDEN ROSS	MURRAY, NE	4187493	JSUL SWC ROSIE 2614K	JSUL SOMETHING ABOUT MARY 8421	11/15/22	11.3	50	78	50	119	45	4.0	85	18.7	85	12.5	80	0.05	75	-0.079	50	0.85	60	118	80	75	70
70800	COLTON FRANZ	WALLER, TX	4211827	RMR SERENA 201K	JBSF BERWICK 41F	11/13/22	8.6	85	78	50	115	50	3.4	90	20.4	75	11.2	90	0.09	65	-0.090	30	0.88	50	111	90	74	75
70802	CALI BALDWIN	WINCHESTER, IN	4188772	JSUL TSSC RED ROSIE 2621K	JSUL SOMETHING ABOUT MARY 8421	11/9/22	11.3	50	78	50	119	45	4.0	85	18.7	85	12.5	80	0.05	75	-0.079	50	0.85	60	118	80	75	70
70803	MEGAN BROWN - XTB CATTLE CO - ELMORE CATTLE SERVICES	WAUKOMIS, OK	4191227	XTB RED PANDA K413	ETR GCC REAL TIME G380	11/5/22	8.2	90	81	40	114	55	4.6	75	17.4	90	11.5	90	0.02	85	-0.078	50	0.81	65	109	95	74	75

Class 37: Purebred Simmental Heifers, Born October 2022

70806	MORGAN JACKSON	KAUFMAN, TX	4187491	JSUL SWC ROSIE 2557K	JSUL SOMETHING ABOUT MARY 8421	10/26/22	11.3	50	78	50	119	45	4.0	85	18.7	85	12.5	80	0.05	75	-0.079	50	0.85	60	118	80	75	70
70877	SADIE PLAGG	GUTHRIE, OK	4194526	XTB SHAWNEE MISS K522	WLE COPACETIC E02	10/25/22	10.3	65	87	20	128	25	5.2	65	19.7	80	10.3	95	0.14	55	-0.091	15	0.91	45	119	75	81	45
70807	OLIVIA REEVES	PARAGOULD, AR	4183866	XTB SHAWNEE MISS K703	WLE COPACETIC E02	10/24/22	10.3	65	87	20	128	25	5.2	65	19.7	80	10.3	95	0.14	55	-0.091	15	0.91	45	119	75	81	45
70808	CIRCLE M FARMS & PAISLEY NELSON	PLATTE CITY, MO	4189073	S B C SHEZ IT 737K	RECKONING 711F	10/22/22	8.5	85	66	90	97	90	3.8	85	16.5	95	13.5	70	0.07	75	-0.047	95	0.92	40	113	85	68	95
70809	MAKENNA SNODGRASS	BROCK, NE	4196631	SNODGRASS CASSIDY 200K	JSUL SOMETHING ABOUT MARY 8421	10/21/22	10.6	65	73	70	108	70	4.6	75	16.0	95	12.2	85	0.13	60	-0.046	95	0.65	95	119	75	74	80
70810	MAKENNA HOPPA	FREMONT, MI	4188773	JSUL TSSC ROSIE 2620K	JSUL SOMETHING ABOUT MARY 8421	10/19/22	11.3	50	78	50	119	45	4.0	85	18.7	85	12.5	80	0.05	75	-0.079	50	0.85	60	118	80	75	70
70811	MURRAY STATE COLLEGE	TISHOMINGO, OK	4169626	MISS PV SAMMIE	JSUL SOMETHING ABOUT MARY 8421	10/18/22	12.3	40	73	70	109	65	5.0	65	19.3	80	13.2	75	0.05	75	-0.059	85	0.79	70	120	75	74	80
70812	CIRCLE M FARMS & ROCKING P LIVESTOCK	MAYSVILLE, KY	4190331	RP/CMFM WILD FLOWER K080	HPF QUANTUM LEAP Z952	10/12/22	10.7	60	76	55	115	50	3.4	90	18.9	85	9.5	99	0.17	50	-0.093	15	0.95	35	119	75	78	60
70814	McCOY LANDWEHR	ENID, OK	4182197	DGSF DIAMOND 12K	JSUL SOMETHING ABOUT MARY 8421	10/5/22	14.1	20	80	40	118	45	6.1	45	16.7	95	8.1	99	-0.06	95	-0.072	50	0.87	55	109	95	75	75

Class 38: Purebred Simmental Heifers, Born September 2022

70815	KALLIE CLOUD	CARTHAGE, MO	4176837	WALLACE BURGESS 2127K	SJW EXIT 44 7111E	9/25/22	9.8	75	73	70	106	75	5.7	55	21.6	65	9.9	95	0.07	75	-0.069	70	0.57	99	109	95	72	85
70816	LEXANDRIA CLEMONS	FAIR PLAY, MO	4189037	TESF LADY LIBERTY K275	HILB ORACLE C033R	9/16/22	11.6	50	73	70	104	75	3.5	90	18.6	85	12.8	80	0.04	80	-0.108	5	0.83	65	119	75	74	75
70817	ABBYGAYLE SPIVEY	EUSTACE, TX	4174430	JSUL PCC RED ROSIE 2558K	JSUL SOMETHING ABOUT MARY 8421	9/12/22	11.3	50	78	50	119	45	4.0	85	18.7	85	12.5	80	0.05	75	-0.079	50	0.85	60	118	80	75	70
70819	BRADY APPLGATE	EWING, KY	4192737	JSUL SOMETHING EXTRA 2564K	JSUL SOMETHING ABOUT MARY 8421	9/10/22	11.3	50	78	50	119	45	4.0	85	18.7	85	12.5	80	0.05	75	-0.079	50	0.85	60	118	80	75	70

Champion Senior Heifer Calf _____
Reserve Champion Senior Heifer Calf _____

Place	Tag	Exhibitor	Hometown	ASA No.	Animal Name	Sire	DOB	CE	%	WW	%	YW	%	MCE	%	Milk	%	STAY	%	MB	%	BF	%	REA	%	\$API	%	\$TI	%	GE
-------	-----	-----------	----------	---------	-------------	------	-----	----	---	----	---	----	---	-----	---	------	---	------	---	----	---	----	---	-----	---	-------	---	------	---	----

Class 39: Purebred Simmental Heifers, Born June - July 2022

70822	MARCIE HARWARD	CATAWBA, NC	4188472	TL MISS ELLIE 131K	TL LEDGER	7/5/22	10.3	65	67	90	91	95	5.4	60	15.4	99	10.4	95	0.13	60	-0.073	50	0.82	65	111	90	70	90
70823	KATLIN ADAMS	AMBER, OK	4161940	K41	WHF/JS/CCS DOUBLE UP G365	6/15/22	8.3	90	81	35	116	50	2.8	95	14.8	99	14.4	65	-0.03	90	-0.065	70	0.91	45	114	85	74	75

Class 40: Purebred Simmental Heifers, Born May 2022

70827	ADDISON BARTLOW and ADCOCK LAND & LIVESTOCK	MONTICELLO, IL	4147629	TL ROXANNE 84K	TL LEDGER	5/24/22	10.5	65	66	90	95	95	5.7	55	16.4	95	11.1	90	0.13	60	-0.049	95	0.60	95	116	80	71	85
70828	BLAKE BRUNS	NORTH PLATTE, NE	4080939	FLAR BECKY 226K ET	WLE COPACETIC E02	5/23/22	9.5	75	82	35	119	45	5.3	60	15.9	95	10.0	95	0.09	65	-0.090	30	0.86	55	114	85	78	60
70829	DAKOTA LYNN FRANZ	WALLER, TX	4090015	LWD KIERTSEN	WLE COPACETIC E02	5/21/22	12.5	35	76	55	106	75	7.5	25	14.9	99	13.6	70	0.18	45	-0.092	15	0.83	65	130	55	79	55
70832	CIRCLE M FARMS & ROCKING P LIVESTOCK	MAYSVILLE, KY	4109033	ROCKING P BUILT TO LOVE K067	RECKONING 711F	5/6/22	9.4	80	75	65	109	65	4.3	80	17.3	95	14.0	65	0.05	75	-0.028	99	0.67	90	120	75	74	75
70833	CUTTER WILLHOUR	INOLA, OK	4091673	JSUL PCC SHINY ROSIE 2395K	JSUL SOMETHING ABOUT MARY 8421	5/5/22	11.3	50	78	50	119	45	4.0	85	18.7	85	12.5	80	0.05	75	-0.079	50	0.85	60	118	80	75	70
70874	SADIE PLAGG	GUTHRIE, OK	4099001	PLJ/ECS MISS KHLOE 864K	WLE COPACETIC E02	5/3/22	10.3	65	78	50	115	50	5.6	55	18.1	90	8.2	99	0.16	50	-0.095	15	0.96	35	115	85	78	55
70835	FERGUSON CATTLE CO	MENTOR, OH	4105691	FSCI CRYSTAL GAYLE K225	SO REMEDY 7F	5/2/22	11.3	50	67	90	107	70	4.4	80	14.6	99	12.3	80	-0.08	99	-0.084	30	0.89	50	113	90	69	95

Champion Intermediate Heifer _____
Reserve Champion Intermediate Heifer _____

Class 41: Purebred Simmental Heifers, Born March - April 2022

70837	RAIMEY YOCHAM	SAPULPA, OK	4232507	JSUL ROSIE TIMES 400K	JSUL SOMETHING ABOUT MARY 8421	4/27/22	11.3	50	78	50	119	45	4.0	85	18.7	85	12.5	80	0.05	75	-0.079	50	0.85	60	118	80	75	70
70840	SADIE ROBISON	CUSHING, OK	4102670	JBSF KIM 240K	JSUL SOMETHING ABOUT MARY 8421	4/22/22	13.5	25	75	60	112	60	6.3	45	18.9	85	13.0	75	0.07	75	-0.050	95	0.81	65	123	65	75	70
70842	KELTON ARTHUR	STILLWATER, OK	4101266	S B C SHEZ IT 807K	RECKONING 711F	4/21/22	8.5	85	66	90	97	90	3.8	85	16.5	95	13.5	70	0.07	75	-0.047	95	0.92	40	113	85	68	95
70843	MORGAN JACKSON	KAUFMAN, TX	4098774	MISS KITTY 155K	SO REMEDY 7F	4/20/22	10.1	70	83	30	132	20	3.1	95	13.4	99	7.4	99	0.01	85	-0.102	5	1.01	25	107	95	77	65
70846	KALE ROBISON	CUSHING, OK	4135327	FRKG COUNTESS 947K	TL LEDGER	4/7/22	13.2	25	72	75	100	85	7.3	30	17.7	90	8.8	99	0.10	65	-0.086	30	0.77	75	115	85	75	70
70848	MAKENNA SNODGRASS	BROCK, NE	4096130	4/B MISS REMEDY 146K	SO REMEDY 7F	3/28/22	12.4	35	87	20	131	20	4.8	70	21.9	60	8.4	99	-0.03	90	-0.081	30	1.09	15	112	90	80	50
70850	SARA SULLIVAN	DUNLAP, IA	4121428	JSUL ROSIE 2400K	JSUL SOMETHING ABOUT MARY 8421	3/14/22	12.5	35	74	65	116	50	4.7	75	18.7	85	12.1	85	-0.07	95	-0.075	50	0.82	65	111	90	70	90
70852	SHEFFIELD RANCH	POOLVILLE, TX	4097547	SWSN MISS REMEDY 958	SO REMEDY 7F	3/7/22	13.7	20	77	55	117	45	5.7	55	12.7	99	7.9	99	-0.09	99	-0.083	30	0.69	90	108	95	73	80
70854	GUS GOODSON	EARLSBORO, OK	4091668	JSUL PCC ROSIE 2225K	JSUL SOMETHING ABOUT MARY 8421	3/3/22	11.3	50	78	50	119	45	4.0	85	18.7	85	12.5	80	0.05	75	-0.079	50	0.85	60	118	80	75	70
70855	CHARLEY MACH	YUKON, OK	4105712	MS JH MARTHA K201	WLE COPACETIC E02	3/3/22	13.0	30	79	45	120	40	5.4	60	18.1	90	8.5	99	0.18	45	-0.080	50	0.78	75	114	85	78	60

Class 42: Purebred Simmental Heifers, Born January - February 2022

70858	BUCK CREEK RANCH	YALE, OK	4099366	B C R MISS TIME TO SHINE 085K	WLE COPACETIC E02	2/27/22	13.0	30	76	60	108	70	6.5	40	19.1	85	11.8	85	0.19	45	-0.080	50	0.80	70	128	55	80	50
70859	CIRCLE M FARMS & ROCKING P LIVESTOCK	MAYSVILLE, KY	4098060	SFI MISS SNAKE EYES K11	WLE COPACETIC E02	2/21/22	8.7	85	75	60	109	65	3.3	90	22.9	55	13.3	75	0.10	65	-0.070	70	1.11	15	118	75	75	70
70861	HADLEY HENDRICKSON	FARMLAND, IN	4088049	JSUL TSSC LADY IN BLACK 2181K	JSUL SOMETHING ABOUT MARY 8421	2/11/22	9.8	75	86	25	137	15	3.0	95	18.7	85	11.7	85	0.04	80	-0.100	15	1.02	25	117	80	79	55
70864	BARRETT DUNCAN	BONHAM, TX	4128403	4/B MISS HONEY SUCKLE 109K	W/C RELENTLESS 32C	2/7/22	10.7	60	74	65	101	85	4.5	75	20.2	75	6.9	99	0.13	60	-0.067	70	0.93	40	107	95	74	75
70865	TY KITZEROW	SAINT CHARLES, IA	4088891	R/F LEVEL UP K121	WLE COPACETIC E02	2/2/22	11.6	50	77	55	115	50	5.2	65	17.2	95	7.9	99	-0.04	95	-0.089	30	0.94	40	106	99	74	80
70866	MORGAN JACKSON	KAUFMAN, TX	4095910	VCL COUNTESS OF 255 17K	SO REMEDY 7F	1/20/22	11.0	55	72	75	111	60	4.1	80	13.3	99	12.2	85	0.12	60	-0.083	30	0.84	60	121	70	74	75
70868	ELMORE CATTLE SERVICES - PEPPER ELMORE - XTB CATTLE CO - IVIE & SONS	WAUKOMIS, OK	4088390	XTB SHES A HOTTIE K02	CCS/WHF OL`SON 48F	1/4/22	8.4	85	80	40	115	50	3.3	90	17.8	90	9.1	99	0.05	75	-0.079	50	0.92	40	107	95	76	70

GRAND CHAMPION PUREBRED SIMMENTAL HEIFER _____
GRAND CHAMPION PUREBRED SIMMENTAL HEIFER _____

PREMIER EXHIBITOR _____
PREMIER BREEDER _____

XFB

Cattle Company

Donors



OBCC Legend S12X // 2570141
3/4 RENDITION

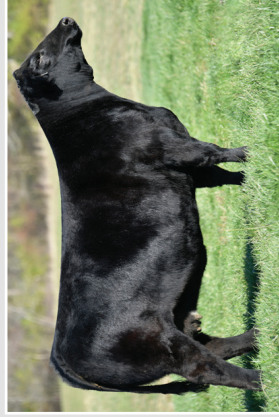


GVC Hottie T25X // 2556153
3/4 STEEL FORCE

Gifts



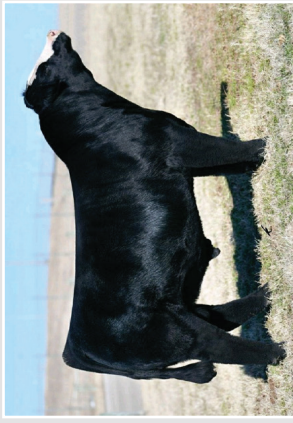
WLE Black Mamba // 3615549
20-21 SHOW BULL OF THE YEAR



Miss Time To Shine Y251 // 2633273
PUREBRED



OBCC Goose GB17 // 3711427
20-21 RESERVE SHOW BULL OF THE YEAR



OBCC Designated Survivor // 3711454
20-21 RESERVE % SHOW BULL OF THE YEAR

OWNER
Brandon Brewer
817-929-2589

CONSULTANT
Greg Burden
405-780-0372

SHOW & SALE CATTLE
Jason Elmore
580-554-1278