

STOCKYARDS CITY



2023
ANGUS
at the
CONGRESS

R

AT THE CATTLEMEN'S CONGRESS ON

RANCE LONG

918.510.3464

RLONG@RANCELONG.COM

JAN

5

AT 5 P.M.

WHERE PROVEN GENETICS MEET NEW TRADITIONS

Williams Angus - Angus Foundation Donation



POWELL ERICA 7312

The income-producing donor dam of the donation pregnancy selling has a Lot A.

A WILLIAMS ERICA HEIFER

Due Date: 05-02-2023

Confirmed HC Pregnancy

*Poss Maverick

##*Basin Payweight 1682

*Poss Deadwood

Poss Pride 5163

19597261

*Poss Ellunmere 399

Poss Easy Impact 0119

#Poss Ellunmere 0170

+*ECO Lombardi 1512

##*V A R Discovery 2240

+*Powell Erica 7312

##*RB Lady 7125-890-2170

18861105

+*Williams Prop Erica 255-895

##*G A R Prophet

*Williams Erica 812

	Sire	Dam
\$M	+63	+96
\$W	+78	+101
\$B	+260	+207
\$C	+400	+364

	CED	BW	WW	YW	ANGLE	CLAW	MILK	HP	CW	MARB	RE
\$	+12	-.3	+82	+147	+32	+45	+28	+10.8	+83	+1.90	+97
D	+5	+2.8	+101	+167	+31	+40	+37	+12.1	+89	+1.05	+95

A tremendous genetic opportunity to select this confirmed heifer pregnancy sired by the proven curve bender Poss Deadwood and backed by the record-producing and high-income-producing donor for the Williams Angus Program, Powell Erica 7312.

- Powell Erica 7312 has established over 1.0 million dollars in progeny sales for the Williams Angus Program and an opportunity to select direct progeny from this incredible female offers unlimited genetic merit.
- Maternal siblings to this resulting heifer calf include the \$120,000 Williams Promogen, the \$100,000 one-half interest Williams Hollywood, and the \$100,000 one-half interest Williams Jonesboro. All three are featured in the Soaring Eagle program and a maternal sister in the Butz-Hill program, the \$130,000 Williams HT Erica 700-139.
- Powell Erica 7312 continues to place herself among the breed's most elite proven females in terms of her progeny sales and in terms of her EPD profile as she is one of the only proven dams in the entire breed with her combination of WW, YW, MB, RE, SM, SW, SB, and SC traits.
- Invest in the future with this elite opportunity.

ANGUS
Foundation

3201 FREDERICK AVE.
ST. JOSEPH, MO 64506
WWW.ANGUSFOUNDATION.ORG

Thank You!

To Williams Angus for their generosity and support of the Angus Foundation as 100% of the proceeds from this pregnancy go to the benefit of the Angus Foundation and the future of our breed.

ANGUS *at the* CONGRESS

2023 NEW TRADITIONS CONTINUE

The 2023 Angus at The Congress promises to be one of the most exciting sales to kick off the Spring 2023 sale season! It is always a pleasure to work with great Angus breeders throughout the country and this year's sale offering has genetics included from coast to coast and border to border from the breed's most prominent programs. A super set of Angus heifers will be on hand throughout the week of the Congress and will be selling in this year's Angus at The Congress sale. In addition to those live animals, there will also be a top set of females selling via video. Plus, an elite set of frozen genetics backed by the most prominent cow families in the breed.

As you study the list of 2023 sale participants on page 2, you will find a set of breeders that are committed to producing the right kind of cattle to make a positive impact in the breed. Their consignments this year are as good as you will find and represent each of their respective programs quite well. It is humbling to have breeders of this quality reach out to us to participate in this event. We look forward to showcasing their genetics on January 5, 2023. As you study each of the individual lots selling, you will find a set of genetics that soar to the top of the breed for a multitude of EPD'S. We feel confident you will be able to find genetics to add to your program no matter the direction or goals you have set.

A special thank you to everyone involved with the Cattlemen's Congress in OKC and their commitment to create a friendly environment for exhibitors and sale participants to showcase their genetics to the world! Their dedication to the future of our business is first class! Also, a special thank you to the American Angus Association and the staff and board members for recognizing the need and continuing their commitment to the Cattlemen's Congress. Breeders of all sizes appreciate the opportunity to have venues such as the Cattlemen's Congress to market their genetics to fellow breeders.

As we look forward to 2023 and beyond, there is no doubt the Angus cattle market is in our favor. The dynamics are set for the years ahead to have as much uplift and positivity as we have seen in quite some time. Now is the time to invest in front-end genetics from proven family programs like those represented in this sale offering. This power-packed set of genetics will place any program at the top of the breed as our business prospers!

We look forward to seeing you in OKC for the 2023 Cattlemen's Congress and hope to see you on the evening of January 5th for the Angus at the Congress sale. If you have any questions about the cattle selling or would like more information, please feel free to reach out to any of the breeders participating or give me a call at (918) 510-3464.



Sincerely,
Rance Long



Sale Managed By

RANCE LONG, INC
918.510.3464 cell
RLong@RanceLong.com
www.RanceLong.com

Schedule

MONDAY, JAN 2

8 a.m. Angus Check-in – Open & Junior Shows
1 p.m. Angus Check-in – Pen Shows – Performance Arena
3 p.m. National Angus Bull Sale Check-in – Performance Arena

TUESDAY, JAN 3

5 p.m. Bases Loaded Sale - Heritage Place

WEDNESDAY, JAN 4

9 a.m. Angus University Education – Super Barn Sale Arena
1 p.m. GMC in the OKC – Cattlemen's Bar
2 p.m. ROV Angus Bull Show – Jim Norick Arena
5:30 p.m. Denim & Diamonds Sale – Super Barn Sale Arena

THURSDAY, JAN 5

8 a.m. Junior Angus Heifer Show – Jim Norick Arena
5 p.m. Angus at the Congress Sale – Super Barn Sale Arena

FRIDAY, JAN 6

8 a.m. Angus Pen Show – Heifers, Carload of 8, Pen of 3 Show – Performance Arena
12:30 p.m. Angus Bull Sale Display – Super Barn Sale Arena
2:00 p.m. National Angus Bull Sale – Super Barn Sale Arena
4:30 p.m. Celebrating 150 Years of Angus Social – Cattlemen's Bar

SATURDAY, JAN 7

8 a.m. ROV Female Angus Show – Jim Norick Arena

2023 Sale Participants

570 GENETICS

Mission Hill, SD
(605) 695-3213
Matt_Gunderson@hotmail.com
Lot 54

7 OAKS ANGUS

Durant, IA
(319) 541-3290
SevenOaksAngus@gmail.com
Lots 11, 20, 21, 25

ATM FARMS

Maysville, KY
(606) 584-7950
Andrew_2154@hotmail.com
Lot 32

BETTS ANGUS

Roosevelt, UT
(435) 724-1165
KarlDouglasBetts@yahoo.com
Lot 37B

BEVER ANGUS

Walnut Grove, MN
(507) 828-4798
BeverAngus@gmail.com
Lots 45A, 45B, 47

BOYD BEEF CATTLE

Mays Lick, KY
(606) 584-5194
CBoyd2@maysvilleky.net
Lots 3, 13A, 13B, 27, 27A

CAM RANCHES

Arnoldsville, GA
(478) 719-7021
Andrew_McPeake@hotmail.com
Lot 53

CROUCH ANGUS FARM

Glenwood, IA
(402) 250-7213
JCDecks@hotmail.com
Lot 44

CWT ANGUS

Yamhill, OR
(925) 519-3561
barlazact@frontier.com
Lot 49

DEER VALLEY FARM

Fayetteville, TN
(931) 703-6330
JJPerry@deervalleyfarm.com
Lots 1, 10, 18

EAGLE GRIP CATTLE CO.

Denair, CA
(209) 581-1579
EGCattleco@gmail.com
Lots 22A, 22B, 22C, 22D,
23, 28, 29, 46

ELLINGSON ANGUS

Saint Anthony, ND
(701) 595-1364
EllingsonAngus@westriv.com
Lot 4

ERNST CATTLE CO.

Maquoketa, IA
(563) 599-6617
Lot 41

EXPRESS ANGUS RANCHES

Yukon, OK
(405) 350-0044
Mark.Squires@expressranches.com
Lots 9, 15

EZ ANGUS

Porterville, CA
(559) 333-0362
CDavis@ez-angusranch.us
Lot 9

GAFFNEY CATTLE

Barneveld, WI
(608) 574-2325
GaffneyFamilyCattle@gmail.com
Lots 11, 20, 21

HYLINE ANGUS RANCH

Bozeman, MT
(406) 580-0224
BenVanDyke7@gmail.com
Lot 19

KNOLL CREST FARM

Red House, VA
(434) 941-8245
KnollCrest@knollcrestfarm.com
Lot 2

LISONBEE ANGUS RANCH

Roosevelt, UT
(435) 724-2318
James_Lisonbee@yahoo.com
Lot 37A

LONG ANGUS RANCH

Vinita, OK
(918) 510-3464
RLong@RanceLong.com
Lots 5, 5A

LORSON ANGUS FARMS

Jersey Shore, PA
(570) 337-9427
CALorson@comcast.net
Lot 31

MAKOVICKA ANGUS

Ulysses, NE
(402) 367-7728
Lot 40

MALEK ANGUS RANCH

Higwood, MT
(406) 899-4360
MalekAngusRanch@gmail.com
Lot 38

MAPLECREST FARMS

Hillsboro, OH
(937) 763-6000
John@maplecrest.com
Lot 30

MASON CATTLE COMPANY

Livingston, TN
(931) 397-7422
LMmaso3@gmail.com
Lot 32

MILLSTONE CATTLE CO.

Shelbyville, KY
(502) 558-4334
Lot 35

MYERS ANGUS FARM

Harrodsburg, KY
(859) 265-0097
Jmyers@SelectSires.com
Lots 5, 6A, 6B, 16, 27, 27A

NORTHERN KY CATTLE COMPANY

Walton, KY
Lot 32

OGEECHIE ANGUS FARM

Wadley, GA
(229) 646-4785
SmittyLamb@hotmail.com
Lot 8

PINE VIEW FARM

Manchester, KY
(606) 599-6866
DLR@pvfinc.net
Lots 24A, 24B

POWERS ANGUS RANCH

Platte, SD
(616) 581-6527
DaveP@Cannonsburgwoodproducts.com
Lots 26C, 52

RILEY BROTHERS ANGUS

Darlington, WI
(608) 778-7066
RileyBrosAngus@hotmail.com
Lots 39, 43

R-VALUE FARM

Rosebush, MI
(517) 204-4747
Mark@rvaluefarms.com
Lots 37C, 37D

SANKEY ANGUS

Economy, IN
(517) 749-5556
Cody.Sankey@gmail.com
Lots 46, 55

SCHROEDER ANGUS

Clarence, IA
(563) 357-4044
SchroederAngus@msn.com
Lot 7

STEVENSON DOWN T ANGUS

White Sulphur Springs, MT
(406) 350-5443
Stevenson.Darrell@yahoo.com
Lot 12

STONE CREEK ANGUS

Freeport, IL
(815) 266-6260
Jfisher@fisherinc.com
Lot 42

STRASBURG ANGUS

Marshall, WI
(608) 444-2637
AndyStrasburg@gmail.com
Lots 50, 51

TAMME VALLEY FARM

Danville, KY
(859) 583-7134
Jacob.Tamme@gmail.com
Lots 6A, 6B

TD ANGUS

North Platte, NE
(307) 660-8650
TDAngus@outlook.com
Lots 14, 26A, 26B

VALLEY OAKS ANGUS

Oak Grove, MO
(573) 280-2351
Tony@valleyoaks.com
Lots 17, 48

WHITE ANGUS FARMS

Woodward, OK
(580) 571-5710
drmorei@msn.com
Lots 33, 34

WILLIAMS ANGUS

Gray, TN
(423) 341-7044
AlexWilliams1229@hotmail.com
Lots A, 36

WOIRHAYE CATTLE COMPANY

Darby, MT
(406) 531-4531
RJWoirhaye@live.com
Lots 56A, 56B, 56C

Deer Valley Blacklass 2235



DEER VALLEY BLACKLASS 2235

This tremendous daughter of Deer Valley Growth Fund sells as Lot 1.

- **Consigned by: Deer Valley Farm**
- Breed impacting growth values in this tremendous daughter of one of the breed's all-time heaviest used AI sires, Deer Valley Growth Fund.
- Her proven donor dam is by one of the breed's most time-tested AI sires, Plattemere Weigh Up K360, and her next dam is a maternal sister to the past ABS Global Sire GAR High Noon 5421.
- Big-time figures backed by proven and predictable pedigree with as much style and eye appeal as you could ask for in this exciting female who will no doubt make a great donor in any program.

DEER VALLEY BLACKLASS 2235

Birth Date: 02-06-2022		Cow # 20367198		Tattoo: 2235						
#*Basin Payweight 1682		#**Basin Payweight 006S								
+*Deer Valley Growth Fund		21AR O Lass 7017								
18827828		+*Deer Valley Rita 36113		#*Plattemere Weigh Up K360						
				+Deer Valley Rita 9457						
#*Plattemere Weigh Up K360		#*Sitz Upward 307R		\$M +75 20%						
+*Deer Valley Blacklass 91200		#Barbara of Plattemere 337		\$W +88 1%						
19466577		+*H P C A Prophet A343		\$B +179 10%						
		+G A R Objective 217L		\$C +307 10%						
CEU	BW	WW	YW	ANGLE	CLAW	MILK	HP	CW	MARB	RE
+11 15%	+9 45%	+86 3%	+154 3%	+48 50%	+46 35%	+33 10%	+10.6 65%	+81 2%	+7.5 40%	+5.5 65%



DEER VALLEY BLACKLASS 2362

A maternal sister to Lot 1.



DEER VALLEY BLACKLASS 2236

A full sister to Lot 1.



DEER VALLEY GROWTH FUND

One of the breed's heaviest used AI sires – a daughter sells as Lot 1.

Maternal Sister to Surpass



CED	BW	WW	YW	ANGLE	CLAW	MILK	HP	CW	MARB	RE
+12	+3	+74	+126	+27	+35	+36	+20.6	+55	+1.00	+71

\$M	+120
\$W	+84
\$B	+166
\$C	+335

A GENETIC COMBINATION FOR Greatness!

BJ SURPASS



CONNELY CRAFTSMAN



CED	BW	WW	YW	ANGLE	CLAW	MILK	HP	CW	MARB	RE
+8	+1.7	+83	+145	+39	+38	+40	+21.5	+67	+1.03	+95

\$M	+115
\$W	+93
\$B	+178
\$C	+346

2 HEIFER PREGNANCY

Due Date: 02-15-2023

*Sitz Resilient 10208

*Sitz Stellar 726D

*Connealy Craftsman

*Sitz Miss Burgess 1856

20132505 *Black Cathy of Conanga 8521

*Connealy Niobrara 5451

Black Carla of Conanga 450

#*G A R Prophet

#C R A Bextor 872 5205 608

+*BJ Prophet 5275

+G A R Objective 1885

18531298 *BJ Complete 1165

#*Summitcrest Complete 1P55

+*BJ 5050 New Design 9164

	Sire	Dam
\$M	+115	+85
\$W	+93	+86
\$B	+178	+178
\$C	+346	+316

	CED	BW	WW	YW	ANGLE	CLAW	MILK	HP	CW	MARB	RE
\$	+8	+1.7	+83	+145	+39	+38	+40	+21.5	+67	+1.03	+95
♀	+8	+2.1	+81	+150	+42	+46	+42	+13.9	+63	+1.06	+83



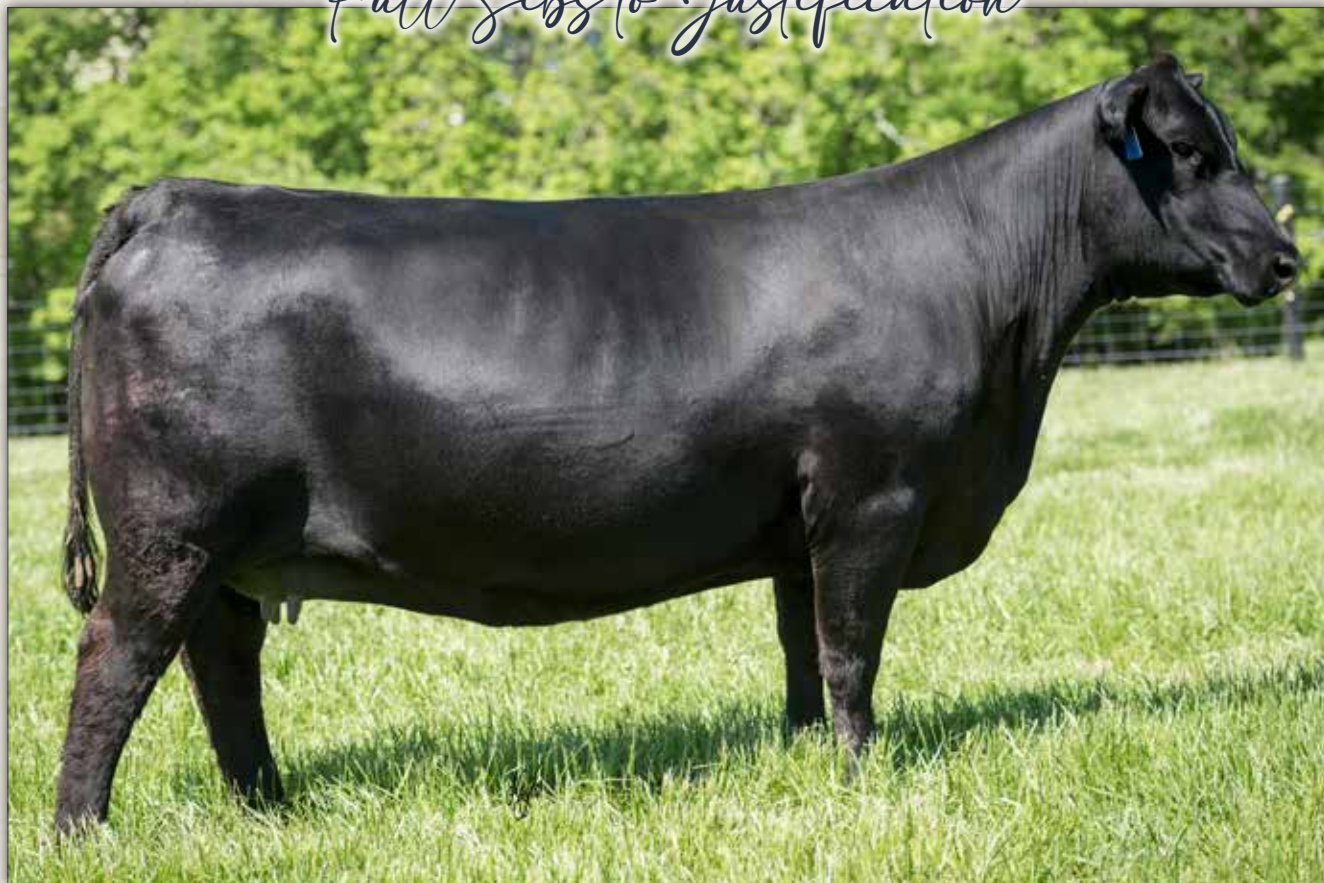
BJ PLAYBOOK 9240

This prominent Boyd Beef Cattle and Spruce Mountain Ranch donor is a maternal sister to Lot 2.

• Consigned by: Knoll Crest Farm

- An elite genetic opportunity in this blending of BJ Prophet 5275, best known as the dam of the heavily used BJ Surpass with the record-selling \$500,000 Connealy Craftsman who is featured in the ST Genetics and Select Sires AI studs.
- The dam of this pregnancy anchors the ET program in the Knoll Crest Farm program where she is a powerful, easy-fleshing individual who transmits her phenotype, performance, carcass merit, foot quality, and fertility to her progeny.
- In addition, 5275 has three daughters in production combining for WR 3@104 and now has an ultrasound progeny record showing %IMF 35@104 with YREA 35@100. Additionally, BJ Prophet 5275 is produced from a dam who has 11 total daughters in production combining for WR 19@105 plus records %IMF 35@110.
- An opportunity to invest in superior genetic merit that will result in a maternal sibling to the latest addition to the ABS Global Stud, BJ Surpass as well as a maternal sibling to the very popular Spruce Mountain and Boyd Beef Cattle donor, BJ Playbook 9240.

Full Sibs to Justification



BOYD ABIGALE 9056

The dam of Boyd Justification and the embryos selling as Lot 3.

- **Consigned by: Boyd Beef Cattle**
- Genetic merit that soars for maternal superiority in this package of embryos that will result in full siblings to the \$87,500 Boyd Justification 1004 who is a member of the Genex AI stud as well as a herd sire in the Boyd Beef Cattle, Stevenson Angus, TC Ranch, 4M Angus, and Wilmoth Angus programs.
- Boyd Justification 1004 is one of the most popular young AI sires in the Genex lineup offering a superb balance in his EPD profile highlighted with exceptional foot quality as well as a \$M value in the top 5% of the breed and a \$C value in the top 10% of the breed.
- Boyd Abigale 9056 posted an impressive individual performance in the BBC program with BR - 97, WR - 105, and YR - 105 and now has a progeny record of WR 2@103 with YR 1@109 which will undoubtedly play a significant role in the future of the Boyd Beef Program.
- The maternal superiority in this genetic package traces from multiple generations of excellence - both Boyd Abigale 6079 and Boyd Abigale 0001 have long been favorites of all visitors to Boyd Beef Cattle.
- An embryo package backed by four consecutive generations of proven Boyd Beef donors that will result in full sibs to Boyd Justification 1004!

3 ABIGALE EMBRYOS

4 Conventional Embryos

Connealy Judgment
#*KG Justified 3023
 17707279 KG Miss Magic 1443

#*Connealy Consensus 7229
 #Entrine of Conanga 9876
 #*Sitz Wisdom 481T
 KG Miss Magic 3528

*Connealy Mainstay
+*Boyd Abigale 9056
 19419935 +*Boyd Abigale 6079

*Connealy Glory 4127
 Jayce of Conanga 318E
 #Connealy Thunder
 *Boyd Abigale 0001

	Sire	Dam
\$M	+90	+48
\$W	+79	+74
\$B	+137	+187
\$C	+268	+291

CEU	BW	WW	YW	ANGLE	CLAW	MILK	HP	CW	MARB	RE
\$ +12	-2.0	+61	+109	+4.6	+.35	+29	+16.1	+32	+1.13	+31
0 +6	+8	+89	+156	+3.5	+.43	+18	+2.3	+74	+7.6	+94



BOYD ABIGALE 6079
 The maternal granddam of Boyd Justification 1004.



BOYD ABIGALE 0001
 The influential matriarch of the Boyd Abigale family.



BOYD JUSTIFICATION 1004
 Full sibling embryos sell as Lot 3.

A Full Sister to Ellingson Prolific



EA QUEEN 2318

This full sister to Ellingson Prolific sells as Lot 4.

4 EA QUEEN 2318

Birth Date: 02-24-2022

Cow #20374075

Tattoo: 2318

*S Powerpoint WS 5503

Tehama Revere

*Ellingson Profound 8155

*S Queen Essa 248

19203612 #**EA Rosetta 6157

#*Connealy Capitalist 028

#EA Blackbird 0038

#Koupal Juneau 797

#*O C C Juneau 807J

EA Queen 8070

Koupals Elba 187

19177681 EA Queen 2350

G V F Forward 0141

E A Queen 0313

\$M +96 1%

\$W +66 25%

\$B +113 85%

\$C +243 50%

CEB	BW	WW	YW	ANGLE	CLAW	MILK	HP	CW	MARB	RE											
+7	45%	+2.4	80%	+71	20%	+118	35%	+35	3%	+20	1%	+23	75%	+15.5	10%	+48	50%	+30	85%	+54	65%

• Consigned by: Ellingson Angus

- This is an unprecedented opportunity to acquire full ownership of the only sister in existence to the \$175,000 record-selling bull of the Ellingson Angus program, Ellingson Prolific, the featured ST Genetics sire who has quickly become one of the most talked about young sires in the industry and is being utilized by a large number of the most progressive programs in our business.
- EA Queen 8070 has been one of the most inquired females in the Ellingson program and individually is super massive and stout yet elegant and feminine



EA QUEEN 8070

The powerful and highly productive dam of Lot 4.



ELLINGSON PROLIFIC

CEB	BW	WW	YW	ANGLE	CLAW	MILK	HP	CW	MARB	RE
+6	+2.6	+93	+154	+17	+05	+25	+16.8	+80	+53	+69

\$M +122

\$W +87

\$B +161

\$C +331

From the Dam of Tahoe!



TEHAMA MARY BLACKBIRD Y684

This high maternal dam of Tehama Tahoe B767 is the donor dam of Lot 5 and the maternal granddam of Lot 5A.

5 MARY BLACKBIRD EMBRYOS
3 Vytelle Embryos

*Ellingson Profound 8155 *S Powerpoint WS 5503
#**EA Rosetta 6157
20136857 EA Queen 8070 #Koupal Juneau 797
EA Queen 2350

#*S A V Final Answer 0035 #Sitz Traveler 8180
*Tehama Mary Blackbird Y684 S A V Emulous 8145
16876258 Tehama Mary Blackbird T073 #G A R Retail Product
+Tehama Mary Blackbird R704

	Sire	Dam
\$M	+122	+93
\$W	+87	+83
\$B	+161	+140
\$C	+331	+275

	CED	BW	WW	YW	ANGLE	CLAW	MILK	HP	CW	MARB	RE
\$	+6	+2.6	+93	+154	+1.7	+0.05	+25	+16.8	+80	+53	+69
D	+11	-.5	+73	+124	+5.0	+4.8	+31	+16.5	+45	+6.7	+56

- **Consigned by: Myers Angus Farm and Long Angus Ranch**
- One of the most unique matings ever created from the dam of Tehama Tahoe B767 is this blending of the \$175,000 Ellingson Prolific with Tehama Mary Blackbird Y684.
- Tehama Mary Blackbird Y684 earned a progeny record in the Tehama Program with BR 7@99, WR 6@101, YR 3@102, and %IMF 32@104. Her next dam is the influential Tehama Mary Blackbird T073 who has a record of WR 8@105 and YR 8@103.
- Power and performance backed by breed-impacting maternal superiority.

5A MARY BLACKBIRD EMBRYOS
3 Vytelle Embryos

*Tehama Patriarch F028 #*S S Niagara Z29
*Virginia Tech Statesman Tehama Elite Blackbird D826
20085208 **Vpi 310A Rita 9G6 Et *Ellingson Homestead 6030
AED Rita 310A

#*S S Niagara Z29 #*Hoover Dam
*Long Mary Blackbird 0057 Jet S S X144
20034090 **Tehama Mary Blackbird Y684 #*S A V Final Answer 0035
Tehama Mary Blackbird T073

	Sire	Dam
\$M	+84	+55
\$W	+82	+69
\$B	+205	+169
\$C	+350	+274

	CED	BW	WW	YW	ANGLE	CLAW	MILK	HP	CW	MARB	RE
\$	+8	+2	+89	+168	+3.4	+4.5	+28	+17.7	+78	+1.21	+86
D	+8	+2	+70	+134	+4.5	+4.3	+30	+9.0	+60	+7.9	+79

- **Consigned by: Long Angus Ranch**
- Fresh and exciting genetics in this blending of the popular Select Sires AI sire Virginia Tech Statesman with a maternal sister to Tehama Tahoe B767.
- The dam of these embryos blends the proven high maternal and Pathfinder sire S S Niagara Z29 with the dam of Tahoe, Tehama Mary Blackbird Y684.
- The resulting progeny should excel with breed leading EPD traits in many boxes.



TEHAMA TAHOE B767

This breed-leading maternal sire is a maternal brother to Lot 5 and a maternal brother to the dam of Lot 5A.



VIRGINIA TECH STATESMAN
Popular sire of Lot 5A.

Everelda Entense Embryos



SITZ EVERELDA ENTENSE 4037

This Myers Angus Farm and Tamme Valley donor is a dam of Lots 6A and 6B.

6A EVERELDA ENTENSE EMBRYOS

4 Conventional Embryos

*Sitz Resilient 10208
 *Sitz Stellar 726D
 *Connealy Craftsman
 20132505 *Black Cathy of Conanga 8521
 *Sitz Miss Burgess 1856
 *Connealy Niobrara 5451
 Black Carla of Conanga 450
 #*SITZ Logo 12964
 *Sitz Tebow 11860
Sitz Everelda Entense 4037
 18763070 #Sitz Everelda Entense 3150
 #*SITZ Shauna 3152
 #Sitz Dimension 8607
 #*Sitz Everelda Entense 4376

	Sire	Dam
\$M	+115	+96
\$W	+93	+76
\$B	+178	+142
\$C	+346	+280

CED	BW	WW	YW	ANGLE	CLAW	MILK	HP	CW	MARB	RE
\$ +8	+1.7	+83	+145	+39	+38	+40	+21.5	+67	+1.03	+95
D +6	+1.0	+78	+132	+36	+51	+24	+20.4	+61	+37	+62

6B EVERELDA ENTENSE EMBRYOS

4 Conventional Embryos

*Ellingson Profound 8155
 *Ellingson Prolific
 20136857 EA Queen 8070
 *S Powerpoint WS 5503
 #*EA Rosetta 6157
 #Koupal Juneau 797
 EA Queen 2350
 #*SITZ Logo 12964
 *Sitz Tebow 11860
Sitz Everelda Entense 4037
 18763070 #Sitz Everelda Entense 3150
 #*SITZ Shauna 3152
 #Sitz Dimension 8607
 #*Sitz Everelda Entense 4376

	Sire	Dam
\$M	+122	+96
\$W	+87	+76
\$B	+161	+142
\$C	+331	+280

CED	BW	WW	YW	ANGLE	CLAW	MILK	HP	CW	MARB	RE
\$ +6	+2.6	+93	+154	+17	+05	+25	+16.8	+80	+53	+69
D +6	+1.0	+78	+132	+36	+51	+24	+20.4	+61	+37	+62

• Consigned by: Myers Angus Farm and Tamme Valley Farm

- An opportunity to select from two packages of embryos produced from the latest addition to the Myers Angus Farm and Tamme Valley programs, Sitz Everelda Entense 4037, who was selected as a highlight female through the record-breaking Fall 2021 Sitz Angus Ranch sale.
- Sitz Everelda Entense 4037 offers a superb high-maternal EPD profile highlighted with excellent \$M and individually posted BR - 95, WR -108, and YR -106 in the Sitz program and now has a progeny record of BR 4@99 with WR 3@101 and YR 2@104. In addition, the Pathfinder maternal granddam of these embryos has established a progeny record of WR 7@104 and YR 7@106 and has three daughters in production combining for WR 13@103.
- A maternal sister to these embryos, Sitz Everelda Entense 1360, sold as the \$39,000 top-selling bred heifer of the 2021 Nile sale to join the Rooney Angus Ranch program.



CONNELLY CRAFTSMAN
The \$500,000 sire of Lot 6A.



SITZ EVERELDA ENTENSE 1360
A maternal sister to Lots 6A and 6B.



ELLINGSON PROLIFIC
The \$175,000 sire of Lot 6B.



SITZ EVERELDA ENTENSE 1137
The foundation of the Everelda Entense family.

Pride Embryos



SITZ PRIDE 48E
The high-performance dam of Lot 7.

- **Consigned by: Schroeder Angus**
- Sitz Pride 48E is one of the newest editions to the Schroeder program and is backed by the influential Sitz Pride cow family.
- In the Sitz program, Sitz Pride 48E posted a very low birth ratio of 86 along with WR - 108 and YR - 114 with nearly 70 contemporaries and she also has gone on to earn a progeny record of BR 4@93 with WR 3@102 along with an EPD profile that is very well-balanced from calving ease and birth to growth and end-product traits while also offering an excellent balance in her \$M and \$C combination.
- The Pathfinder maternal granddam of these embryos records BR 4@92 with WR 3@106 and YR 3@108.
- The \$600,000 sire of these embryos has been mated to only the very best females in the breed with his semen commanding record prices - the resulting progeny of this mating will offer unlimited genetic merit and blend the most prominent cow families ever developed throughout the state of Montana.

7 PRIDE EMBRYOS

3 IVF Embryos			
*Basin Deposit 6249	#*Basin Advance 3134		
*Basin Jameson 1076	*Basin Lucy 4288		
20071781	*Basin Joy 9140	*EXAR Monumental 6056B	
		*Basin Joy 5367	
	#*Raven Powerball 53	#**PA Power Tool 9108	
*Sitz Pride 48E	#*Raven Emma E 4241	*Raven Emma E 4241	
18740945	*Sitz Pride 225C	*Sitz RLS Upward 12263	
		Sitz Pride 124a	

	CED	BW	WW	YW	ANGLE	CLAW	MILK	HP	CW	MARB	RE
\$	+8	+1.5	+108	+179	+39	+44	+30	+14.3	+96	+1.38	+1.02
!	+10	-.1	+66	+122	+66	+54	+22	+20.1	+50	+95	+75

	Sire	Dam
\$M	+81	+77
\$W	+102	+60
\$B	+221	+168
\$C	+368	+295

MATERNAL AND GROWTH

Combination



BASIN JAMESON 1076
The \$600,000 dollar sire of Lot 7.

Ogeechee Hometown 215



OGEECHEE HOMETOWN 215

This incredible daughter of the record-selling G A R Home Town sells as Lot 8.

8	OGEECHEE HOME TOWN 215		Tattoo: 215							
	Birth Date: 02-15-2022	Cow # 20459922								
*G A R Ashland		*G A R Early Bird								
*G A R Home Town		**Chair Rock Ambush 1018								
19266718	*Chair Rock Sure Fire 6095	##*G A R Sure Fire								
		**Chair Rock Progress 3005								
*G A R Method		*G A R Momentum	\$M +63 50%							
+*Ogeechee Method 824		*G A R Daybreak 1332	\$W +86 2%							
19537992	*Ogeechee Sunrise 5049	**G A R Sunrise	\$B +220 1%							
		**Ogeechee Rita 3315	\$C +348 1%							
CED	BW	WW	YW	ANGLE	CLAW	MILK	HP	CW	MARB	RE
+15 2%	+5 35%	+91 2%	+167 1%	+45 30%	+53 65%	+31 20%	+10.7 65%	+75 5%	+1.32 5%	+1.34 1%

- **Consigned by: Ogeechee Angus Farm**
- One of the most intriguing daughters of the record-selling \$475,000 G A R Home Town to sell is this female from the heart of Ogeechee Angus program.
- Her incredible EPD profile places her among the breed's very best for multiple traits making her a genetic masterpiece in terms of creating low-birth progeny that will dominate the breed for growth values as well as for all end-product traits.
- She represents multiple generations of proven and predictable Ogeechee breeding and is backed by the Rita cow family.



G A R HOME TOWN
The \$475,000 sire of Lot 8.

Growth
**WITH SUPERIOR
END-PRODUCT MERIT!**

Deer Valley Rita 2269



DEER VALLEY RITA 2269

This high-growth daughter of G A R Greater Good sells as Lot 10.

IO	DEER VALLEY RITA 2269		Tattoo: 2269							
	Birth Date: 02-22-2022	Cow # 20384976								
+*G A R Ashland		*G A R Early Bird								
+*G A R Greater Good		**Chair Rock Ambush 1018								
19362382	+*G A R Sure Fire A5008	#*G A R Sure Fire								
		*G A R Mandate A2011								
TEX Playbook 5437		#Basin Payweight 1682								
+*Deer Valley Rita 9116		**Rita 1C43 of 9M26 Complete								
19466558	*Deer Valley Rita 5646	#**SandPoint Butkus X797								
		Deer Valley Rita 3686								
CE	BW	WW	YW	ANGLE	CLAW	MILK	HP	CW	MARB	RE
+8 35%	+3.7 95%	+101 1%	+175 1%	+46 35%	+59 85%	+23 75%	+11.1 55%	+81 2%	+91 25%	+1.14 3%
\$M	\$W	\$B	\$C							
+64 45%	+82 3%	+195 4%	+317 4%							

- **Consigned by: Deer Valley Farm**
- Breed leading growth values in this daughter of the ST Genetics sire, G A R Greater Good.
- She excels among all her contemporaries to the elite top 1% of the entire breed for both WW and YW traits while also offering an excellent combination of MB and REA traits and excels for \$C value.
- Her dam is an elegantly designed, picture-perfect daughter of the leading maternal sire TEX Playbook 5437 and her next is the \$250,000 valued Deer Valley Rita 5646, a female who served as a long-time donor in the Spruce Mountain and DVF programs.
- Curve-bending EPDs in this female backed by multiple generations of proven DVF Rita females.



DEER VALLEY RITA 9116

This tremendous daughter of Playbook is the dam of Lot 10.



DEER VALLEY RITA 0681

This \$310,000 top-selling female of the 2021 DVF sale is a maternal sister to the dam of Lot 10.

Down T Queen 2061



DOWN T QUEEN 2061

This exceptional daughter of SG Salvation sells as Lot 12.

12 DOWN T QUEEN 2061 [DDP-MIP]
 Birth Date: 04-11-2022 Cow # 20421206 Tattoo: 2061

**Baldrige Alternative E125 Poss Easy Impact 0119
 *SG Salvation Baldrige Blackbird A030
 19559741 **MGR JP Rita 7037 #*Basin Payweight 1682
 *MGR Rita 2145

*K C F Bennett TheRock A473 #*K C F Bennett Southside
Cudlobe Queen 6E +K C F Miss Protege W148
 19877793 Cudlobe Queen 15B Cudlobe In Focus 35Y
 Cudlobe Queen 20Z

\$M	+62	55%
\$W	+73	10%
\$B	+202	3%
\$C	+324	3%

CED	BW	WW	YW	ANGLE	CLAW	MILK	HP	CW	MARB	RE											
+8	35%	+2.3	75%	+94	1%	+164	1%	+56	85%	+65	95%	+19	95%	+16.3	10%	+77	4%	+1.22	10%	+78	30%

- **Consigned by: Stevenson Down T Angus**
- Tremendous style and eye appeal in this well designed and attractive profiling daughter of the extremely popular AI sire SG Salvation. Plus, she offers an impeccable EPD profile with elite rankings for both WW and YW as well as MB and \$C values.
- Her dam is backed by a long line of Cudlobe genetics and has proven to be quite prolific in the Stevenson ET program.
- An incredible individual who will add power and performance in an elegant design with a pedigree offering mating flexibility.



\$M	+65
\$W	+61
\$B	+231
\$C	+365

SG SALVATION

CED	BW	WW	YW	ANGLE	CLAW	MILK	HP	CW	MARB	RE
+8	+3.2	+78	+139	+4.1	+4.0	+22	+11.2	+83	+1.32	+96

Superior
GROWTH
AND PERFORMANCE!

Lucy X Salvation Embryos



VINTAGE LUCY 9552
The dam of Lots 13A and 13B.

13A LUCY EMBRYOS

3 Conventional Embryos

***SG Salvation**
19559741 ****MGR JP Rita 7037**

****V A R Signal 7244**

***Vintage Lucy 9552**
19532269 ****XLAR Lucy 5152**

Poss Easy Impact 0119
Baldridge Blackbird A030
#**Basin Payweight 1682
***MGR Rita 2145**

#**Basin Payweight 1682
****PF CC&7 Henrietta Pride 1044**
****V A R Generation 2100**
****SydGen Lucy 2107**

	Sire	Dam
\$M	+65	+62
\$W	+61	+67
\$B	+231	+174
\$C	+365	+288

	CED	BW	WW	YW	ANGLE	CLAW	MILK	HP	CW	MARB	RE
\$	+8	+3.2	+78	+139	+41	+40	+22	+11.2	+83	+1.32	+96
D	+8	+1.4	+80	+145	+53	+47	+22	+16.5	+67	+71	+62

• Consigned by: Boyd Beef Cattle

- An embryo package blending the proven and very popular SG Salvation with the Boyd Beef donor, Vintage Lucy 9552.
- The dam of these embryos has a progeny record of WR 1@103 and her dam who is also the dam of the \$50,000 Grimmus sire VAR Leverage 9225 has earned a progeny record of WR 3@101 and YR 3@101.
- A maternal brother to these embryos, Boyd Hallmark 2014, is a member of the 2023 Cattleman's Congress Pen for Boyd Beef and will be a feature in their March bull sale.
- Proven genetics backed by the high-income producing Basin Lucy cow family.

13B LUCY EMBRYOS

3 Conventional Embryos

***SG Salvation**
19559741 ****MGR JP Rita 7037**

****V A R Signal 7244**

***Vintage Lucy 9552**
19532269 ****XLAR Lucy 5152**

Poss Easy Impact 0119
Baldridge Blackbird A030
#**Basin Payweight 1682
***MGR Rita 2145**

#**Basin Payweight 1682
****PF CC&7 Henrietta Pride 1044**
****V A R Generation 2100**
****SydGen Lucy 2107**

	Sire	Dam
\$M	+65	+62
\$W	+61	+67
\$B	+231	+174
\$C	+365	+288

	CED	BW	WW	YW	ANGLE	CLAW	MILK	HP	CW	MARB	RE
\$	+8	+3.2	+78	+139	+41	+40	+22	+11.2	+83	+1.32	+96
D	+8	+1.4	+80	+145	+53	+47	+22	+16.5	+67	+71	+62



VAR LEVERAGE 9225

The \$50,000 maternal brother to Vintage Lucy 9552.



BOYD HALLMARK 2014

This feature of the 2023 Boyd Beef Cattle Bull Sale is a maternal brother to Lots 13A and 13B.

Pick of the Whitewaters From TD Angus



HCC WHITEWATER 9010
Pick of his daughters from TD Angus sells as Lot 57.

14 PICK OF WHITEWATER HEIFER CALVES

\$M	+72	20%
\$W	+73	15%
\$B	+187	5%
\$C	+315	4%

CED	BW	WW	YW	ANGLE	CLAW	MILK	HP	CW	MARB	RE											
+13	10%	-1.1	10%	+72	25%	+129	20%	+42	20%	+61	90%	+27	45%	+13.5	25%	+55	30%	+1.33	3%	+1.32	1%

- **Consigned by: TD Angus**
- **PICK OF THE ENTIRE WHITEWATER CALF CROP**
- An opportunity to sort the entire Spring 2022 heifer calves sired by HCC Whitewater 9010 from the TD Angus program.
- HCC Whitewater 9010 was selected by a group of progressive breeders as one of the highlight bulls to sell in the Spring of 2021 when he sold for \$280,000 and is one of the breed's most popular sons of Mill Brae Identified 4031.
- A complete listing of Whitewater daughters available for this selection will be made available to the buyer and these females will be backed by some of the most prominent cow families in the entire TD Angus program.

Opportunity

ENTIRE WHITEWATER CALF CROP

Exar Blackbird 2071



EXAR BLACKBIRD 2071
She sells as Lot 15.

- **Consigned by: Express Angus Ranches**
- This high-performance daughter of the \$36,000 ABS sire Basin Safe Deposit 9324 offers tremendous MB and REA traits with an excellent \$C and individually posted a weaning ratio of 101.
- Her \$36,000 sire is a paternal brother to \$600,000 Basin Jameson 1076.
- Her dam sired by the \$80,000 EXAR Monumental 6056B was selected as a \$60,000 highlight of a past Riverbend sale and produced this daughter who sells as Lot 15 as her first natural calf with a weaning ratio of 101.

15 EXAR BLACKBIRD 2071

Birth Date: 01-26-2022		Cow #20281675		Tattoo: 2071						
+*Basin Deposit 6249		#*Basin Advance 3134								
+*Basin Safe Deposit 9324		+*Basin Lucy 4288								
19461028	+*Basin Joy 2006	#*Summitcrest Complete 1P55								
		Basin Joy 566T								
*EXAR Monumental 6056B		3F Epic 4631		\$M +49 85%						
*Riverbend Blackbird H259		*FWY 7008 of C085 4029		\$W +63 30%						
19723095	Riverbend Blackbird F111	*Woodside Rito 4P26 of 0242		\$B +212 2%						
		Riverbend Blackbird D539		\$C +324 3%						
CEB	BW	WW	YW	ANGLE	CLAW	MILK	HP	CW	MARB	RE
+5 60%	+2.3 75%	+77 10%	+146 5%	+48 50%	+4.7 35%	+23 75%	+5.1 95%	+75 5%	+1.19 10%	+1.09 5%



RIVERBEND BLACKBIRD H259
The dam of Lot 15.



Basin Safe Deposit 9324
This member of the ABS Global Stud is the sire of Lot 15.

Blackbird 7113 X Commerce Embryos



EF BLACKBIRD 7113
The impressive donor dam of Lot 16.

16 BLACKBIRD EMBRYOS

4 Conventional Embryos

***Connealy Commerce**
20132642 *Avira of Conanga 814R

+*G A R Sunrise
*G A R Ingenuity 3132
**Connealy Cade
*Avie of Conanga 624P

+*EXAR Butkus 5757B
+*EF Blackbird 7113
18702382 +*EF Blackbird 3241

#+*SandPoint Butkus X797
**Sitz Henrietta Pride 643T
#*Connealy Consensus 7229
**Sandpoint Blackbird 8809

	Sire	Dam
\$M	+82	+79
\$W	+92	+68
\$B	+180	+138
\$C	+315	+258

	CED	BW	WW	YW	ANGLE	CLAW	MILK	HP	CW	MARB	RE
\$	+11	+1.6	+96	+162	+48	+46	+29	+14.6	+69	+97	+1.01
D	+12	+0	+73	+128	+38	+35	+23	+12.8	+53	+44	+61

- **Consigned by: Myers Angus Farm**
- A genetic opportunity blending the \$185,000 ST Genetics sire Connealy Commerce with the powerful and impressive Myers Angus Farm donor, EF Blackbird 7113.
- Through the Fall 2021 Myers Angus and Tamme Valley sale, a daughter of EF Blackbird 7113 sold as the \$45,000 second top-selling female of the event to Chad Milner in Georgia.
- EF Blackbird 7113 is a granddaughter of the \$250,000 valued Blackbird 8809 and she herself sold as one of the highlight females of the Solid Rock dispersal.
- A tremendous genetic opportunity in this mating.



MYERS BLACKBIRD M551
The \$45,000 maternal sister to Lot 16.



CONNELY COMMERCE
The \$185,000 sire of Lot 16.

Valley Oaks Pride 2055



VALLEY OAKS PRIDE 2055

This tremendous daughter of G A R Home Town sells as Lot 17.

- **Consigned by: Valley Oaks Angus**
- A phenomenal EPD profile in this huge numbered daughter of the \$475,000 G A R Home Town.
- Her ability to soar among her contemporaries throughout the breed for both weaning and yearling EPDs as well as carcass and \$ values is impressive and will prove valuable.
- Her dam descends from the high-income producing Henrietta Pride cow family and is a direct daughter of the record-selling Baldridge Colonel C251. Plus, she has weaned her first natural calf with the ratio of 104.
- A true breeding piece backed by one of the breed's all-time great cow families.

17 VALLEY OAKS PRIDE 2055

Birth Date: 02-08-2022

Cow # 20326629

Tattoo: 2055

+*G A R Ashland
 *G A R Home Town
 19266718 +*Chair Rock Sure Fire 6095

*G A R Early Bird
 +*Chair Rock Ambush 1018
 #**G A R Sure Fire
 +*Chair Rock Progress 3005

+*Baldridge Colonel C251
 +*ValleyOak HenriettaPride 908
 19455542 +*PF Henrietta Pride 5524

+baldridge Xpand x743
 *Baldridge Isabel Y69
 #*A A R Ten X 7008 S A
 +*PF 1P55 Henrietta Pride 2512

\$M	+65.45%
\$W	+82.3%
\$B	+219.1%
\$C	+349.1%

CEU	BW	WW	YW	ANGLE	CLAW	MILK	HP	CW	MARB	RE											
+5	60%	+3.1	90%	+96	1%	+171	1%	+46	35%	+55	70%	+27	45%	+12.8	35%	+92	1%	+1.06	15%	+1.13	3%

Incredible
EPD PROFILE!



G A R HOME TOWN

The \$475,000 record-selling sire of Lot 17.

Deer Valley Henrietta 2177



DEER VALLEY HENRIETTA 2177

This daughter of the Select Sires AI sire Deer Valley Optimum 9246 sells as Lot 18.

18 DEER VALLEY HENRIETTA 2177

Birth Date: 01-12-2022

Cow #20367181

Tattoo: 2177

+*Deer Valley Growth Fund
 +*Deer Valley Optimum 9246
 19466633 +*G A R Progress 830

##*Basin Payweight 1682
 +*Deer Valley Rita 36113
 ##*G A R Progress
 G A R 111 Rito 3346

#*HA Cowboy Up 5405
 +*Deer Valley Henrietta 7726
 19107445 +*Deer Valley Henrietta 2604

*HA Outside 3008
 ##*HA Blackcap Lady 1602
 ##*Connealy Consensus 7229
 +*Sitz Henrietta Pride 639T

\$M	+93	1%
\$W	+84	2%
\$B	+157	30%
\$C	+297	10%

CED	BW	WW	YW	ANGLE	CLAW	MILK	HP	CW	MARB	RE											
+8	35%	+1.5	55%	+81	10%	+147	5%	+3.7	10%	+4.1	15%	+33	10%	+13.1	30%	+70	10%	+6.0	55%	+5.9	60%

• Consigned by: Deer Valley Farm

- This daughter of the popular and proven Select Sires AI sire Deer Valley Optimum 9246 offers an impressive EPD profile from low birth to high growth with an excellent \$M/\$C combination.
- Her dam sired by the record-selling Pathfinder sire Cowboy Up is a granddaughter of the \$100,000 valued Sitz Henrietta Pride 639T and has earned a progeny record of WR 1@102 with YR 1@102.
- Style and eye appeal in this fancy, well-designed, and attractive profiling optimum female descending from one of the breed's all-time most influential cow families.



SITZ HENRIETTA PRIDE 639T

The \$100,000 valued foundation dam of Lot 18.



DEER VALLEY HENRIETTA 7726

The dam of Lot 18.

Hyline Eileenmere 214 Pregnancy



HYLINE EILEENMERE 214

This Hyline Angus Ranch donor is the dam of Lot 19.

- **Consigned by: Hyline Angus Ranch**
- A great genetic opportunity in this mating of the \$150,000 valued Deer Valley Optimum 9246 with the proven and high maternal Hyline donor, Eileenmere 214.
- The dam of this pregnancy has earned an exceptional progeny record in the Hyline program with BR 4@98, WR 3@110, and YR 1@108, and she traces to the proven Pathfinder dam in the Hyline program Eileenmere 184.
- The sire of this pregnancy is one of the breed's heaviest-used sons of Deer Valley Growth Fund and consistently stamps his progeny with added eye appeal and style while also transmitting double-digit CED with extra growth and MB along with \$C.
- An opportunity to select genetics from one of the breed's most established programs.
- A maternal brother will lead off the 2023 Highline Angus Ranch Bull Sale.

19 HEIFER PREGNANCY

Due Date: 01-29-2023

+*Deer Valley Growth Fund
 +*Deer Valley Optimum 9246
 19466633 +*G A R Progress 830

#*Basin Payweight 1682
 +*Deer Valley Rita 36113
 #*G A R Progress
 G A R 111 Rito 3346

+Hyline O'Reilly Factor 270
 Hyline Eileenmere 214
 18853257 +Hyline Eileenmere 933

#Vin-Mar O'Reilly Factor
 +Hyline Lucy 456
 #*TC Franklin 619
 #Hyline Eileenmere 184

	Sire	Dam
\$M	+68	+47
\$W	+77	+55
\$B	+183	+144
\$C	+305	+234

	CED	BW	WW	YW	ANGLE	CLAW	MILK	HP	CW	MARB	RE
\$	+11	+5	+79	+149	+49	+57	+30	+10.6	+68	+94	+63
D	+3	+3.0	+64	+114	+49	+44	+29	+11.5	+52	+30	+50

Proven
**HIGH MATERNAL
 GENETICS!**



DEER VALLEY OPTIMUM 9246

This popular Select Sires AI sire is also the sire of Lot 19.

JANUARY 5

Page 21

7 Oaks GFC Blackbird 213



7 OAKS GFC BLACKBIRD 213

She sells as Lot 20.

20 7OAKS GFC BLACKBIRD 213

Birth Date: 01-23-2022

Cow # 20460645

Tattoo: 213

#*Jindra Acclaim

*Jindra 3rd Dimension

*Jindra Stonewall

+Jindra Blackbird Lassy 1111

18996455 #Jindra Ebony J 707 593

#*Jindra Double Vision

Jindras Steel Magnolia J 506

Poss Easy Impact 0119

#Poss Total Impact 745

+*RRR Blackbird E147

Poss Elmaretta 736

18804005 Baldridge Blackbird A030

#*Hoover Dam

Baldridge Blackbird X89

\$M +40 95%

\$W +64 25%

\$B +203 3%

\$C +303 10%

CED	BW	WW	YW	ANGLE	CLAW	MILK	HP	CW	MARB	RE
+8 35%	+7 40%	+67 30%	+140 10%	+52 70%	+53 65%	+36 4%	+8.7 85%	+75 5%	+1.00 20%	+58 60%

Consigned by: Gaffney Cattle and 7 Oaks Angus

- This impressive high growth and high MB female is produced from the \$100,000 RRR Blackbird E147 who is a full sister to Baldridge Alternative E125.
- Her sire Jindra sold as one of the top-selling bulls of the 2018 Jindra sale for \$42,500 and has produced high-selling progeny throughout the breed.
- RRR Blackbird E147 is a direct daughter of the \$220,000 Baldridge Blackbird A030 who sold to Express Ranches and Spruce Mountain Ranch through the 2021 Baldridge female sale and in addition to producing Baldridge Alternative E125 she is also the dam of the \$250,000 Baldridge Versatile.
- Genetics engineered for proven performance.



BALDRIDGE BLACKBIRD A030

The \$220,000 valued maternal granddam of Lot 20.



BALDRIDGE ALTERNATIVE E125

The proven and popular full brother to the dam of Lot 20.



RRR BLACKBIRD E147

The \$100,000 valued dam of Lot 20.

7 Oaks GFC Isabel 215



7 OAKS GFC ISABEL 215
She sells as Lot 21.

- **Consigned by: Gaffney Cattle and 7 Oaks Angus**
- Tremendous growth and performance in this curve-bending daughter of Sterling Advantage 809 backed by the high-income producing Isabel cow family.
- She combines her superior growth values with a super \$M/\$C combination.
- Her dam stacks two of the most prominent females in the history of the Baldrige program in her pedigree with Baldrige Blackbird A030 and Baldrige Isabel Y69. Plus, her dam has earned a progeny record of BR 2@90 and WR 1@101.
- Her maternal granddam is the \$25,000 Baldrige Isabel B068 who in turn is a full sister to Baldrige Isabel B061 who is the dam of the \$110,000 Baldrige Pappy.
- A big-time female stacking the breed's most prominent cow families in her pedigree.

21	7OAKS GFC ISABEL 215		Tattoo: 215																										
	Birth Date: 01-27-2022	Cow + *20462759																											
*Sterling Advantage 809 19159370		**Connealy Confidence Plus *Baldrige Pratissa C760		#*Connealy Confidence 0100 Elbanna of Conanga 1209 Connealy Consensus 578B Baldrige Pratissa W165																									
*RRR Isabel E136 18804648		*Baldrige Command C036 **Baldrige Isabel B068		#*EF Commando 1366 Baldrige Blackbird A030 #+*G A R Prophet *Baldrige Isabel Y69																									
CE	BW	WW	YW	ANGLE	CLAW	MILK	HP	CW	MARB	RE	\$M	\$W	\$B	\$C															
+7	45%	+2.8	85%	+88	2%	+156	2%	+33	2%	+54	65%	+37	3%	+8.9	85%	+71	10%	+82	35%	+68	45%	+93	1%	+93	1%	+166	20%	+308	5%

Super Growth
FROM THE ISABEL FAMILY!



STERLING ADVANTAGE 809
The sire of Lot 21.

Baldrige Isabel D 275 Embryos



EG ISABEL 075

The \$34,000 top-selling heifer of the 2022 Angus at the Congress sale who is a maternal sister to Lots 22A, 22B, 22C, and 22D.

22A ISABEL EMBRYOS

3 IVF Embryos

***Connealy Craftsman**
20132505 *Sitz Resilient 10208
*Black Cathy of Conanga 8521

*Sitz Stellar 726D
*Sitz Miss Burgess 1856
*Connealy Niobrara 5451
Black Carla of Conanga 450

#*HAYNES Outright 452
+ **Baldrige Isabel D275**
18750285 *Baldrige Isabel Y69

#*K C F Bennett Absolute
HAYNES ND 454 Miss 179
#*Styles Upgrade J59
+Baldrige Isabel T935

	Sire	Ram
\$M	+115	+58
\$W	+93	+75
\$B	+178	+155
\$C	+346	+259

	CED	BW	WW	YW	ANGLE	CLAW	MILK	HP	CW	MARB	RE
\$	+8	+1.7	+83	+145	+3.9	+38	+40	+21.5	+67	+1.03	+95
D	-2	+1.1	+80	+143	+4.4	+4.3	+29	+12.5	+63	+5.9	+71

22C ISABEL EMBRYOS

3 IVF Embryos

***SG Salvation**
19559741 **Baldrige Alternative E125
+*MGR JP Rita 7037

Poss Easy Impact 0119
Baldrige Blackbird A030
#*Basin Payweight 1682
*MGR Rita 2145

#*HAYNES Outright 452
+ **Baldrige Isabel D275**
18750285 *Baldrige Isabel Y69

#*K C F Bennett Absolute
HAYNES ND 454 Miss 179
#*Styles Upgrade J59
+Baldrige Isabel T935

	Sire	Ram
\$M	+65	+58
\$W	+61	+75
\$B	+231	+155
\$C	+365	+259

	CED	BW	WW	YW	ANGLE	CLAW	MILK	HP	CW	MARB	RE
\$	+8	+3.2	+78	+139	+4.1	+40	+22	+11.2	+83	+1.32	+96
D	-2	+1.1	+80	+143	+4.4	+4.3	+29	+12.5	+63	+5.9	+71

22B ISABEL EMBRYOS

3 IVF Embryos

***DB Iconic G95**
19611994 *Musgrave 316 Stunner
*DB Ms Discovery D13

*LD Capitalist 316
#MCATL Blackbird 831-1378
#*V A R Discovery 2240
DB Ms Final Tool 4120

#*HAYNES Outright 452
+ **Baldrige Isabel D275**
18750285 *Baldrige Isabel Y69

#*K C F Bennett Absolute
HAYNES ND 454 Miss 179
#*Styles Upgrade J59
+Baldrige Isabel T935

	Sire	Ram
\$M	+53	+58
\$W	+84	+75
\$B	+217	+155
\$C	+334	+259

	CED	BW	WW	YW	ANGLE	CLAW	MILK	HP	CW	MARB	RE
\$	+5	+1.3	+92	+161	+5.1	+58	+29	+11.0	+77	+1.61	+80
D	-2	+1.1	+80	+143	+4.4	+4.3	+29	+12.5	+63	+5.9	+71

22D ISABEL EMBRYOS

3 IVF Embryos

***Baldrige Pappy**
19235838 **Hoover No Doubt
+*Baldrige Isabel B061

#*Mogck Bullseye
*Miss Blackcap Ellston J2
#*G A R Prophet
*Baldrige Isabel Y69

#*HAYNES Outright 452
+ **Baldrige Isabel D275**
18750285 *Baldrige Isabel Y69

#*K C F Bennett Absolute
HAYNES ND 454 Miss 179
#*Styles Upgrade J59
+Baldrige Isabel T935

	Sire	Ram
\$M	+87	+58
\$W	+70	+75
\$B	+178	+155
\$C	+318	+259

	CED	BW	WW	YW	ANGLE	CLAW	MILK	HP	CW	MARB	RE
\$	+7	+1.2	+76	+133	+3.4	+40	+23	+13.0	+59	+1.17	+86
D	-2	+1.1	+80	+143	+4.4	+4.3	+29	+12.5	+63	+5.9	+71

• Consigned by: Eagle Grip Cattle Co.

- An opportunity to choose from four elite matings that will result in maternal sisters to the \$34,000 top-selling female in 2022, EG Isabel 075 who was selected by 2S Angus.
- The dam of these embryos is a maternal sister to many of the breed's leading donors as she is a direct daughter of the multi-million dollar producing Baldrige Isabel Y69. In addition, Baldrige Isabel D275 posted an individual weaning ratio of 115 in the Baldrige program and has progeny record of WR 1@108 and YR 1@112 and has one daughter in production who weaned her first calf with the ratio of 111.
- Baldrige Isabel D275 is also a full sister to the Genex sire EG Eyes On You.
- Each of these matings offers the very best the breed has to offer.

E G Julianna 106 Embryos



E G JULIANNA 106

- **Consigned by: Eagle Grip Cattle Co.**
- A great opportunity to select a package of embryos sired by the \$50,000 VAR Crosswind 1361 who is one of Fireball's top sons for his combination of MB and REA balanced with breed-impacting \$C.
- The dam of these embryos is a direct daughter of the \$160,000 Shady Brook donor, Baldrige Isabel D753.
- Maternal siblings to EG Julianna 106 include the \$60,000 Baldrige Limitless, the \$50,000 Baldrige Highlander, and the \$40,000 Baldrige Isabel G797 who is featured in the Riverbend Ranch program along with Baldrige Isabel F142 who is a donor for the Pine View program.
- Expect the resulting progeny to excel to the top of the breed for carcass values and bred-in maternal excellence.

23 JULIANNA EMBRYOS

*GB Fireball 672		*G A R Sure Fire 6404
+*V A R Crosswind 1361		*GB Anticipation 432
20020355	+*Vintage Blackcap 8263	*Baldrige Colonel C251
		+*V A R Blackcap 9319
	*Spring Cove Reno 4021	#+*KM Broken Bow 002
+*E G Julianna 106		*Spring Cove Liza 021
20098289	+*Baldrige Isabel D753	#*Mill Bar Hickok 7242
		*Baldrige Isabel Y69

	Sire	Dam
\$M	+78	+90
\$W	+73	+87
\$B	+230	+167
\$C	+376	+307

	CED	BW	WW	YW	ANGLE	CLAW	MILK	HP	CW	MARB	RE
\$	+16	-1.7	+75	+134	+45	+43	+23	+10.5	+70	+1.74	+1.25
D	+4	+1.9	+87	+148	+45	+40	+32	+18.0	+63	+1.04	+70



VAR CROSSWIND 1361
The \$50,000 Alta Genetics sire of Lot 23.



BALDRIDGE ISABEL D753
The \$160,000 maternal granddam of Lot 23.

Baldrige Isabel F142 Pregnancies



BALDRIDGE ISABEL D753
The \$160,000 maternal granddam of Lots 24A and 24B.

24A HEIFER PREGNANCY

Due Date: 04-23-2023

*Poss Maverick
#**Basin Payweight 1682
Poss Pride 5163
Poss Easy Impact 0119
Poss Ellunmere 0170

**Connealy Confidence Plus
#*Connealy Confidence 0100
Elbanna of Conanga 1209
#*Mill Bar Hickok 7242
*Baldrige Isabel Y69

*Poss Deadwood
19597261 *Poss Ellunmere 399

*Baldrige Isabel F142
19234777 **Baldrige Isabel D753

	Sire	Dam
\$M	+63	+101
\$W	+78	+82
\$B	+260	+168
\$C	+400	+319

	CED	BW	WW	YW	ANGLE	CLAW	MILK	HP	CW	MARB	RE
\$	+12	-.3	+82	+147	+32	+45	+28	+10.8	+83	+1.90	+97
0	+7	+1.6	+78	+139	+43	+44	+31	+14.0	+60	+83	+1.03

• Consigned by: Pine View Farm

- The opportunity to select from two elite pregnancies blending the very popular and proven performance sire SG Salvation or the popular Poss Deadwood with the great Isabel cow family.
- The donor dam of these pregnancies is featured in the Pine View Farm program and has earned a progeny record of BR 3@98, WR 2@109, and YR 2@106 along with UREA 2@119. In addition, in the Baldrige Performance program, she posted a phenomenal weaning ratio of 121.
- Full sisters to Baldrige Isabel F142 include the \$40,000 sisters Baldrige Isabel G797 and Baldrige Isabel G794, and full brothers include the \$60,000 Baldrige Limitless and the \$35,000 Baldrige Marksman D274. In addition, maternal brothers to Baldrige Isabel F142 include the \$48,000 Baldrige Harness and the \$50,000 Baldrige Highlander.
- A great genetic package in either of these two matings.



SG SALVATION
The sire of Lot 24A.



BALDRIDGE ISABEL G797
The \$40,000 full sister to
Baldrige Isabel F142.



BALDRIDGE ISABEL H759
A maternal sister to the dam of
Lots 24A and 24B.



POSS DEADWOOD
The sire of Lot 24B.

24B HEIFER PREGNANCY

Due Date: 05-06-2023

**Baldrige Alternative E125
Poss Easy Impact 0119
Baldrige Blackbird A030
#**Basin Payweight 1682
*MGR Rita 2145

**Connealy Confidence Plus
#*Connealy Confidence 0100
Elbanna of Conanga 1209
#*Mill Bar Hickok 7242
*Baldrige Isabel Y69

*SG Salvation
19559741 **MGR JP Rita 7037

*Baldrige Isabel F142
19234777 **Baldrige Isabel D753

	Sire	Dam
\$M	+65	+101
\$W	+61	+82
\$B	+231	+168
\$C	+365	+319

	CED	BW	WW	YW	ANGLE	CLAW	MILK	HP	CW	MARB	RE
\$	+8	+3.2	+78	+139	+41	+40	+22	+11.2	+83	+1.32	+96
0	+7	+1.6	+78	+139	+43	+44	+31	+14.0	+60	+83	+1.03

7 Oaks Elbanna K16



7 OAKS ELBANNA K16
She sells as Lot 25.

- **Consigned by: 7 Oaks Angus**
- **RETAINING ONE FUTURE FLUSH AT THE BUYER'S CONVENIENCE**
- A genetic package that soars for multiple traits in this daughter of the record selling Poss Deadwood who has a multitude of traits in the top 25% of the breed.
- Her dam is the \$16,000 one-half interest daughter of the \$125,000 Elbanna of Conanga 1209 who is best known as the dam of Connealy Confidence Plus.
- Full brothers to the dam of this female include Square B True North 8052 and Square B Atlantis 8060. Maternal siblings include the Beef 360 sire, Connealy Equity and the very rare and popular Connealy Confidence Plus who served as a long-time herd sire for the Benoit program
- Big-time genetics backed by one of the breed's most influential high maternal cow families.

25		7 OAKS ELBANNA K16		Tattoo: K16																	
Birth Date: 06-08-2022		Cow # 20430165																			
*Poss Maverick		#**Basin Payweight 1682																			
*Poss Deadwood		Poss Pride 5163																			
19597261		*Poss Ellunamere 399																			
		#Poss Easy Impact 0119																			
		#Poss Ellunmere 0170																			
S A V Rainfall 6846		#Coleman Charlo 0256																			
+*GMC Elbanna 8051		#*S A V Blackcap May 4136																			
19405244		Elbanna of Conanga 1209																			
		#*Connealy Consensus																			
		Elbasta of Conanga 9703																			
CE	EW	WW	YW	ANGLE	CLAW	MILK	HP	CW	MARB	RE											
+10	20%	-3	20%	+84	4%	+161	2%	+52	70%	+45	30%	+31	20%	+13.7	25%	+75	5%	+1.22	10%	+65	50%

\$M	+80	10%
\$W	+83	2%
\$B	+202	3%
\$C	+342	1%



CONNELY CONFIDENCE PLUS

The popular and rare maternal brother to the dam of Lot 25.



ELBANNA OF CONANGA 1209

This maternal granddam of Lot 25 is also the dam of Connealy Confidence Plus.

Pick of the Butterfly Daughters



THOMAS BUTTERFLY 4742
The incredible dam of Lots 27A, 27B, and 27C with embryos also selling as Lot 27D.



B/R MVP 5247
The sire of Lots 27A, 27B, and 27C.

27A BOYD/MYERS BUTTERFLY 2045 Tattoo:

Birth Date: Cow + 20351665

#**Basin Payweight 1682 #**Basin Payweight 006S
21AR O Lass 7017

*B/R MVP 5247 *B/R Destination 7222-1148
18272672 *B/R Blossom 3254 **B/R Blossom 1102

#Connealy Confidence 0100 Connealy Tobin
*Thomas Butterfly 4742 Becka Gala of Conanga 8281
17955826 Thomas Butter FLY 21042 **Sitz Upward 307R
#Diablo Butter Fly 3012

\$M	+62.55%
\$W	+74.10%
\$B	+137.55%
\$C	+240.55%

CED	BW	WW	YW	ANGLE	CLAW	MILK	HP	CW	MARB	RE											
+12	10%	+6	35%	+74	15%	+129	20%	+4.7	45%	+5.0	50%	+28	35%	+9.8	75%	+4.7	55%	+6.6	50%	+8.3	25%

27C BOYD/MYERS BUTTERFLY 2051 Tattoo:

Birth Date: Cow + 20351670

#**Basin Payweight 1682 #**Basin Payweight 006S
21AR O Lass 7017

*B/R MVP 5247 *B/R Destination 7222-1148
18272672 *B/R Blossom 3254 **B/R Blossom 1102

#Connealy Confidence 0100 Connealy Tobin
*Thomas Butterfly 4742 Becka Gala of Conanga 8281
17955826 Thomas Butter FLY 21042 **Sitz Upward 307R
#Diablo Butter Fly 3012

\$M	+76.15%
\$W	+76.10%
\$B	+128.65%
\$C	+242.50%

CED	BW	WW	YW	ANGLE	CLAW	MILK	HP	CW	MARB	RE											
+14	3%	-1.0	10%	+67	30%	+111	45%	+4.7	45%	+6.4	95%	+27	45%	+8.7	85%	+4.1	70%	+5.3	65%	+8.3	25%

27B BOYD/MYERS BUTTERFLY 2049 Tattoo:

Birth Date: Cow + 20351668

#**Basin Payweight 1682 #**Basin Payweight 006S
21AR O Lass 7017

*B/R MVP 5247 *B/R Destination 7222-1148
18272672 *B/R Blossom 3254 **B/R Blossom 1102

#Connealy Confidence 0100 Connealy Tobin
*Thomas Butterfly 4742 Becka Gala of Conanga 8281
17955826 Thomas Butter FLY 21042 **Sitz Upward 307R
#Diablo Butter Fly 3012

\$M	+80.10%
\$W	+64.25%
\$B	+125.70%
\$C	+242.50%

CED	BW	WW	YW	ANGLE	CLAW	MILK	HP	CW	MARB	RE											
+14	3%	-6	15%	+65	35%	+110	45%	+4.5	30%	+4.4	25%	+21	85%	+12.6	40%	+4.4	60%	+3.8	80%	+7.5	35%

- **Consigned by: Boyd Beef Cattle and Myers Angus Farm**
- **PICK OF THE FLUSH!**
- A great genetic investment opportunity from the Boyd Beef and Myers program offering a choice of these three exciting flush sisters sired by the popular and proven ST Genetics sire B/R MVP 5247.
- The donor dam of these three heifers is also the dam of the embryos selling as Lot 27D has served as a long-time member in both the Boyd Beef and Myers Angus programs where she has produced numerous sale features including the \$30,000 ST Genetics sire who is also owned with Prairie View Farm and Deer Valley Farm, Boyd/Myers Mindset M750. In addition, she is also the dam of the \$48,000 Boyd/Myers Butterfly M236 as well as the \$22,000 Boyd/Myers Butterfly M400.
- Both the dam and granddam of these three flush sisters have been featured donors in the Boyd and Myers programs and combined with the strong maternal influence of the B/R Blossom cow family provide the right traits to make these three females top-end replacements in any program.

Butterfly 4742 X Fair-N-Square Embryos



THOMAS BUTTERFLY 4742
The influential dam of Lot 27D.



MYERS FAIR-N-SQUARE M39
The sire of Lot 27D.

27D BUTTER FLY EMBRYOS

4 Conventional Embryos (Heifer Semen)

*Woodhill Blueprint
*Myers Fair-N-Square M39
19418329 Myers Miss Beauty M136

#*Connealy Confidence 0100
*Thomas Butterfly 4742
17955826 Thomas Butter FLY 21042

#*Connealy Confidence Plus
*Woodhill Evergreen Z291-B233
#Connealy Thunder
#Myers Miss Beauty M476

Connealy Tobin
Becka Gala of Conanga 8281
#*Sitz Upward 307R
#Diablo Butter Fly 3012

	Sire	Dam
\$M	+68	+101
\$W	+69	+81
\$B	+169	+126
\$C	+287	+265

	CED	BW	WW	YW	ANGLE	CLAW	MILK	HP	CW	MARB	RE
\$	+5	+2.2	+79	+138	+41	+46	+24	+10.7	+55	+84	+92
D	+13	-.9	+74	+124	+42	+45	+25	+14.3	+48	+29	+92

- **Consigned by: Boyd Beef Cattle and Myers Angus Farm**
- Maternal superiority in this package of embryos sired by the extremely popular and heavily used ST Genetics sire Myers Fair-N-Square M39.
- The dam of these embryos represents two generations of proven donors in the Boyd Beef and Myers Angus programs where she has been extremely successful earning a progeny record of BR 4@90 and WR 4@103 with YR 4@100 and now has four daughters in production combining for WR 7@101.
- Maternal siblings to this set of embryos include the three heifers being offered as 27A, 27B, and 27C, the ST Genetics Sire Boyd/Myers Mindset M750, the \$48,000 Boyd/Myers Butterfly M236 selected by Express Angus Ranches and Spruce Mountain Ranch, the \$22,000 Boyd/Myers Butterfly M400 now featured in the Katie Colin program as well as several other highlights in past Boyd and Myers sales.
- The maternal granddam of these embryos has also served as a long-time donor for both of these programs and earned a progeny record of BR 4@94 with WR 4@104 and YR 2@101 and she also produced several highlights through past sales now featured in prominent programs throughout the breed.



Boyd/Myers Butterfly M601

- This daughter of Thomas Butterfly 4742 sold to Meadow River Angus through the 2022 Myers Angus Female Sale and she is a full sister to the ST Genetics sire Boyd/Myers Mindset M750.

EG No Doubt 177



EG NO DOUBT 177

This daughter of Hoover No Doubt sells as Lot 28.

- **Consigned by: Eagle Grip Cattle Co.**
- A direct daughter of one of the breed's most proven power sires, Hoover No Doubt.
- This high-performance female who offers tremendous growth and end-product traits in her EPD profile posted an impressive low birth ratio of 94 along with an excellent weaning ratio of 111 in the Eagle Grip program.
- Her dam by the past breed leader for registrations and proven Pathfinder sire Tour of Duty excels in her progeny record with WR 4@107 and YR 3@106.
- A pedigree that blends the very best in pure power and performance with proven maternal superiority.

28	EG NO DOUBT 177																				
	Birth Date: 08-09-2021	Cow #20283234	Tattoo: 177																		
#*Mogck Bullseye		#MOGCK Sure Shot																			
+*Hoover No Doubt		Mogck Mary 1255																			
17882682	*Miss Blackcap Ellston J2	#*SydGen C C & 7																			
		#Miss Blackcap Ellston D154																			
	#*R B Tour Of Duty 177	#*Werner War Party 2417		\$M +51.80%																	
*EG Tour of Duty Daryl609	E G Lady 095 GT Maximum 913	*B A Lady 6807 305		\$W +69.20%																	
18694284		#G T Maximum		\$B +180.10%																	
		EG Lady 095 513		\$C +284.15%																	
CEB	BW	WW	YW	ANGLE	CLAW	MILK	HP	CW	MARB	RE											
+2	85%	+3.0	90%	+80	10%	+147	5%	+52	70%	+47	35%	+31	20%	+12.3	40%	+74	5%	+82	35%	+1.07	5%

Multiple
Generations
**OF EAGLE GRIP
GENETICS!**



HOOVER NO DOUBT

The popular and proven sire of Lot 28.

EG Iconic 176



EG ICONIC 176
She sells as Lot 29.

29 EG ICONIC 176

Birth Date: 08-06-2021

Cow #20283252

Tattoo: 176

*Musgrave 316 Stunner

++LD Capitalist 316

*DB Iconic G95

#MCATL Blackbird 831-1378

19611994 *DB Ms Discovery D13

*V A R Discovery 2240

DB Ms Final Tool 4120

*K C F Bennett TheRock A473

*K C F Bennett Southside

*E G Rock Ella 708

+K C F Miss Protege W148

19098708 *EG Ldy Echo Hyline338 714

#Hyline Right Time 338

Dmnd Oak New Ldy Echo 415-03

\$M	+62.55%
\$W	+65.25%
\$B	+192.5%
\$C	+311.5%

CED	BW	WW	YW	ANGLE	CLAW	MILK	HP	CW	MARB	RE
+5.60%	+9.45%	+76.15%	+138.10%	+40.15%	+48.40%	+22.80%	+15.8.10%	+66.15%	+1.20.10%	+50.70%

Consigned by: Eagle Grip Cattle Co.

- The sire of this female is one of the heaviest used sires in the Genex lineup, DB Iconic G95 whose progeny have been in high demand throughout the fall as they exhibit extra style and eye appeal with excellent performance and a look to make great replacement females.
- Her dam who was bred in the Eagle Grip program is by the proven AI sire KCF Bennett The Rock and she excels for calving ease traits as her two first progeny have earned an average birth ratio of 96.
- Low birth traits with excellent growth and added MB in this stylish, eye-appealing daughter of the popular DB Iconic G95.



DB ICONIC G95

A daughter of this popular Genex sire sells as Lot 29.

**STYLE AND EYE APPEAL
WITH BRED-IN**

Performance!

A Maternal Sister to Gar Sunbeam



G A R INGENUITY 3132

The productive dam of G A R Sunbeam and Lot 30.



HPCA VERACIOUS

The \$135,000 sire of Lot 30.

• Consigned by: Maplecrest Farms

- A unique opportunity to select a maternal sister to the popular ST Genetics sire G A R Sunbeam and the noted Benoit Angus Ranch herd sire G A R Discovery 6737H who sired the exciting Genex line-up member E & B Wildcat 9402.
- G A R Ingenuity 3132 was selected as the top-selling female at a past Gardiner Angus Ranch Annual Production Sale by Maplecrest Farms and Hillhouse Angus. 3132 has established an enviable production record of WR 3@105, YR 3@102, %IMF 93@103, and RE 93@102. 3132 has surpassed \$700,000 in lifetime progeny sales which includes the \$68,000 top-selling female at the 2022 Maplecrest Production Sale to ST Genetics.
- This exciting mating offers a blend of the popular young Select Sires EPD superstar Veracious with one of the most predictable and recognizable females in the Angus breed.

30 HEIFER PREGNANCY

Due Date: 08-22-2023

#*Mill Brae Identified 4031	#*Koupals B&B Identity
+*HPCA Veracious	*Mill Brae Pro Blackcap 1092
19699322	+*G A R Sunrise
+*H P C A Sunrise A246	+*H P C A Prophet A3
#+G A R Ingenuity	#+G A R New Design 5050
G A R Ingenuity 3132	G A R Objective 1067
17353925	+*B/R Ambush 28
+*G A R 28 Ambush N340	+G A R Predestined 2786

	Sire	Dam
\$M	+83	+68
\$W	+89	+52
\$B	+233	+183
\$C	+385	+305

	CED	BW	WW	YW	ANGLE	CLAW	MILK	HP	CW	MARB	RE
\$	+8	+9	+85	+150	+46	+44	+35	+12.7	+80	+1.70	+1.44
D	+14	-9	+54	+105	+35	+40	+26	+12.3	+46	+1.20	+1.14



MAPLECREST BLACKCAP 1310

The \$68,000 maternal sister to Lot 30.



G A R SUNBEAM

The highly used ST Genetics sire of Lot 30.

Full Siblings to G A R Dual Force



G A R EARLY BIRD N895
The dam of G A R Dual Force and Lot 31.

31 DUAL THREAT EMBRYOS

4 Conventional Embryos

#*G A R Sure Fire
+*G A R Dual Threat
19123898 +*G A R Daybreak A3010

#*Connealy In Sure 8524
+Chair Rock 5050 G A R 8086
#MCC Daybreak
*G A R 5050 New Design A91

*G A R Early Bird
+*G A R Early Bird N895
18446103 +*G A R Complete 3011

*G A R Daylight
+*G A R Progress 830
#*Summitcrest Complete 1P55
+*G A R Objective 277L

	Sire	Dam
\$M	+75	+36
\$W	+74	+63
\$B	+205	+187
\$C	+341	+279

	CED	BW	WW	YW	ANGLE	CLAW	MILK	HP	CW	MARB	RE
\$	+10	-.5	+68	+126	+38	+49	+35	+12.8	+65	+1.20	+1.28
D	+9	+9	+68	+121	+57	+72	+28	+10.2	+55	+1.07	+1.17

- **Consigned by: Lorson Angus Farms**
- This package of embryos will result in full siblings to the \$50,000 one-half interest G A R Dual Force.
- The dam of these embryos excels for end-product value and serves as a donor in the Lorson Angus program in Pennsylvania – she posted an impressive %IMF ratio of 114 in the G A R program and currently has a progeny ultrasound record of %IMF 5@107 and UREA 5@101 and is best known as the dam of G A R Dual Force.
- The sire of these embryos is one of the popular Select Sires AI sires who is also a member of the Ogeechee and JLB Ranch Programs and he offers an impressive MB/REA combination while excelling for both dairy value indexes. Plus, is in the top 1% of the breed for \$C value.
- Top-end genetics in this embryo package.



G A R DUAL FORCE
The \$50,000 one-half interest full brother to the embryos selling as Lot 31.



G A R DUAL THREAT
The sire of Lot 31.

BJ Surpass X Quantum Leaps Sister



G A R QUANTUM 209

This full sister to the ST Genetics sire G A R Quantum Leap is the dam of Lot 32.

- **Consigned by: ATM Farms/Mason Cattle Company/Northern KY Cattle Company**
- An impressive Fall born heifer calf blending the extremely popular BJ Surpass with a full sister to the \$200,000 one-half interest ST Genetics sire G A R Quantum Leap.
- G A R Quantum 209 is one of the most impressive daughters of the Select Sires' highly proven G A R Quantum and has earned an ultrasound progeny record of %IMF 3@101.
- MBA Rita 209 is a deep-bodied, attractive profiling, and stout-featured female who soars in terms of her EPD profile with a multitude of traits ranking near the top of the breed – a balance that makes her an exciting breeding piece in any program.

32	M B A RITA 209		Birth Date: 08-18-2022		Cow # *20433006		Tattoo: 209														
	+*BJ Surpass 19774516		+*BJ Prophet 5275		+*TEX Playbook 5437		#**Basin Payweight 1682														
+*G A R Quantum 19568352		Chair Rock Sure Fire 6090		+*G A R Momentum		+*G A R In Sure 1524		\$M +111 1%													
				+*G A R Prophet		*BJ Complete 1165		\$W +85 2%													
				+Chair Rock Ambush 3088				\$B +180 10%													
								\$C +344 1%													
CE	CD	BW	WW	YW	ANGLE	CLAW	MILK	HP	CW	MARB	RE										
+14	3%	-2	20%	+77	10%	+130	20%	+32	2%	+32	2%	+32	15%	+19.6	1%	+59	25%	+1.19	10%	+91	15%



CHAIR ROCK SUREFIRE 6090

The maternal granddam of Lot 32 and dam of G A R Quantum Leap.



G A R QUANTUM LEAP

This popular ST Genetics sire is a full brother to the dam of Lot 32.

Females Safe to G A R Transcendent

- **Consigned by: White Angus Farms**
- A granddaughter of a popular G A R Surefire offering a superb EPD profile from growth to end-product traits.
- Her dam has earned a progeny record of WR 3@102 and YR 1@107 and has one maternal sister to this female in production who weaned her first calf with a ratio of 102.
- Due to calve 7/20/23 to G A R Transcendent.



WHITE SUREFIRE G17
A maternal sister to Lot 33.

33 WHITES SURE FIRE 109
 Birth Date: 02-27-2021 Cow *20068218 Tattoo: 109

#**G A R Sure Fire
 *GAR Sure Fire F05
 19428731 *M W Advance C05

#*Connealy In Sure 8524
 +Chair Rock 5050 G A R 8086
 *G A R Advance
 Roden Lady Ida 709

#**G A R Sunrise
 *G A R sunrise E04
 18862602 Worthington Prophet 215

\$M	+70	30%
\$W	+70	15%
\$B	+203	3%
\$C	+333	2%

CED	BW	WW	YW	ANGLE	CLAW	MILK	HP	CW	MARB	RE											
+5	60%	+2.9	85%	+80	10%	+144	10%	+4.8	50%	+4.7	35%	+25	60%	+13.5	25%	+63	20%	+1.43	3%	+8.9	20%

34 SPRINGFIELD JAUNTY 1022
 Birth Date: 02-02-2021 Cow *20020091 Tattoo: 1022

SydGen Enhance
 *S S Enforcer E812
 19274932 #S S Miss Daybreak K011 3K17

*SydGen Exceed 3223
 SydGen Rita 2618
 S S Daybreak K011
 S S Miss Incentive X19

#**G A R Sure Fire
 +*Springfield Jaunty 8079
 19385591 +*E W A 3114 of 128 Weigh Up

#*Connealy In Sure 8524
 +Chair Rock 5050 G A R 8086
 #*Plattmere Weigh Up K360
 Edgewood Jaunty 128

\$M	+69	30%
\$W	+72	15%
\$B	+200	3%
\$C	+328	2%

CED	BW	WW	YW	ANGLE	CLAW	MILK	HP	CW	MARB	RE											
+1	90%	+3.9	95%	+92	1%	+158	2%	+4.8	50%	+6.3	95%	+17	95%	+8.2	90%	+64	20%	+1.26	10%	+1.00	10%



SPRINGFIELD JAUNTY 1022
She sells as Lot 34.

- **Consigned by: White Angus Farms**
- Phenomenal growth traits of this daughter of Enforcer who is a paternal sister to the \$120,000 one-half interest Deer Valley Apache 1180 and many other high-selling individuals throughout the breed.
- Her dam by G A R Surefire has earned a progeny ultrasound record of %IMF 6@104 and UREA 6@100.
- Due to calve 7/20/23 to G A R Transcendent.



G A R TRANSCENDENT
The service sire of Lots 33 and 34.

G A R Prophet 434 Embryos



Kaye @
Agri-Exposure, LLC

G A R PROPHET 434
The donor dam of Lot 35.

- **Consigned by: Millstone Cattle Co.**
- An opportunity to invest in a package of embryos from the Millstone Cattle Company donor G A R Prophet 434, a female who served as a donor in the Boyd Beef program as well.
- The sire of these embryos was selected as the \$175,000 top-selling bull of the 2019 Connealy Angus Ranch bull sale and is a member of the ST Genetics program.
- G A R Prophet 434 is also the maternal granddam of the ST Genetics sire UT Klein 0020.
- Resulting progeny should excel for MB and REA traits with solid maternal and growth values as well.

35 RITA EMBRYOS

4 Conventional Embryos

#*Connealy Confidence Plus
*Connealy Emerald
19257149 Jace of Conanga 6571

#*Connealy Confidence 0100
Elbanna of Conanga 1209
*Connealy Armory
+Jazzy of Conanga 4660 860C

#*G A R Prophet
+*G A R Prophet 434
17965162 **G A R In Sure G2

#C R A Bextor 872 5205 608
+G A R Objective 1885
#*Connealy In Sure 8524
+DRMCTR Objective 8J33

	Sire	Dam
\$M	+70	+50
\$W	+52	+67
\$B	+160	+175
\$C	+278	+277

	CED	BW	WW	YW	ANGLE	CLAW	MILK	HP	CW	MARB	RE
S	+7	-.3	+64	+126	+41	+38	+19	+12.8	+37	+86	+1.13
D	+6	+2.0	+65	+120	+45	+48	+33	+4.3	+51	+1.36	+69

Superb
END-PRODUCT TRAITS!



CONNELY EMERALD
The \$175,000 sire of Lot 35.

Fund the
FUTURE

INVEST IN THE *future* OF ANGUS.

\$1.4 MILLION
invested in research

\$4 MILLION
scholarships awarded

13,000+
impacts made

Will you help Fund the Future?

THE **FUND THE FUTURE** PROGRAM ALLOWS ANGUS BREEDERS TO DONATE A PORTION OF THE PROCEEDS FROM A DESIGNATED SALE LOT TO **THE ANGUS FUND**, SUPPORTING THE ANGUS FOUNDATION IN CARRYING OUT ITS MISSION.



Fund the Future sale lots will be marked with this emblem, and will ensure the legacy of the Angus breed lives on through the work of the Foundation.

ANGUS
Foundation

3201 FREDERICK AVENUE | ST. JOSEPH, MO 64506 | 816-383-5100 | WWW.ANGUSFOUNDATION.ORG

Deadwood X Full Sister to Hollywood



WILLIAMS E ERICA 700-398

This full sister to Williams Hollywood and Williams Jonesboro is the dam of Lot 36.



POWELL ERICA 7312

The high income producing maternal granddam of Lot 36.

36 WILLIAMS DW ERICA 553-441
 Birth Date: 09-03-2022 Cow # 20495283 Tattoo: 2441
 *Poss Maverick #**Basin Payweight 1682
 *Poss Deadwood Poss Pride 5163
 19597261 *Poss Ellunamere 399 Poss Easy Impact 0119
 #Poss Ellunmere 0170
 *S S Enforcer E812 SydGen Enhance
 +*Williams E Erica 700-398 #S S Miss Daybreak K011 3K17
 19850748 +*Powell Erica 7312 +*ECO Lombardi 1512
 +*Williams Prop Erica 255-895

\$M	+94	1%
\$W	+78	5%
\$B	+228	1%
\$C	+390	1%

CED	BW	WW	YW	ANGLE	CLAW	MILK	HP	CW	MARB	RE											
+8	35%	+1.1	50%	+76	15%	+134	15%	+40	15%	+48	40%	+28	35%	+15.4	10%	+69	10%	+1.59	2%	+1.04	10%

- **Consigned by: Williams Angus**
- A phenomenal opportunity from the Williams program in this exciting heifer calf that can be picked up beginning April 1, 2023.
- The dam of this heifer will play a key role in the future of the Williams program and is a full sister to the \$100,000 one-half interest Williams Hollywood and the \$100,000 one-half interest Williams Jonesboro and a maternal sister to the \$120,000 Williams Promogen.
- The maternal granddam of this heifer, Powell Erica 7312, has become one of the highest income-producing females in the breed as she offers the unique ability to soar for growth EPDs, as well as all end-product and \$ Index Values. Plus, she produced a highlight pregnancy through the 2022 Angus at the Congress sale which sold for \$27,000 to the Soaring Eagle program.
- An exceptional genetic package.



WILLIAMS HOLLYWOOD



WILLIAMS HT ERICA 700-139

The \$130,000 maternal sister to the dam of Lot 36.

WILLIAMS JONESBORO
 Each of these \$100,000 one-half interest bulls are full brothers to the dam of Lot 36.



Powell Erica 9024 Daughters



CKYA

BETTS ERICA 217
She sells as Lot 37B.



LISONBEE ERICA 2148
She sells as Lot 37A.

37A LISONBEE ERICA 2148
 Birth Date: 10-05-2021 Cow # 20189039 Tattoo: 2148
 *G A R Ashland *G A R Early Bird
 *G A R Home Town *Chair Rock Ambush 1018
 19266718 **Chair Rock Sure Fire 6095 **G A R Sure Fire
 **Chair Rock Progress 3005
 *E W A Peyton 642 *Quaker Hill Manning 4EX9
 +Powell Erica 9024 **E W A 444 of 968 Progress
 19427984 **Williams Prop Erica 255 110 **G A R Prophet
 *Williams Erica 812

\$M	+74	20%
\$W	+82	3%
\$B	+222	1%
\$C	+362	1%

37B BETTS ERICA 217
 Birth Date: 02-20-2022 Cow # 20418332 Tattoo: 217
 **Basin Payweight 1682 **Basin Payweight 006S
 *Poss Maverick 21AR O Lass 7017
 18962396 Poss Pride 5163 **Poss Hoover Dam 2509
 +Poss Pride 9526
 *E W A Peyton 642 *Quaker Hill Manning 4EX9
 +Powell Erica 9024 **E W A 444 of 968 Progress
 19427984 **Williams Prop Erica 255 110 **G A R Prophet
 *Williams Erica 812

\$M	+58	65%
\$W	+91	1%
\$B	+206	2%
\$C	+325	3%

CE	CD	BW	WW	YW	ANGLE	CLAW	MILK	HP	CW	MARB	RE										
+5	60%	+3.8	95%	+98	1%	+168	1%	+42	20%	+51	55%	+26	50%	+12.5	40%	+80	3%	+1.56	2%	+1.18	2%

CE	CD	BW	WW	YW	ANGLE	CLAW	MILK	HP	CW	MARB	RE										
+7	45%	+1.5	55%	+88	2%	+150	4%	+50	60%	+66	95%	+38	2%	+12.0	45%	+80	3%	+1.29	10%	+1.00	10%

Consigned by: Betts Angus

- An opportunity to select from two maternal sisters blending the record-selling G A R Home Town and Poss Maverick with the influential R-value Powell Erica 9024.
- Powell Erica 9042 stems from the same great cow family as Powell Erica 7312 and consistently transmits the same impressive growth and end-product traits.
- Each of these two females are super attractive and fault-free in their design and their impressive phenotype blended with their exceptional EPD profiles will no doubt place them in the donor line-up in any progressive program – from growth to end-product and \$ indexes they check all of the boxes.

Powell Erica 9024 Embryos



POWELL ERICA 9024
The donor dam of Lots 37C and 37D.

37C ERICA EMBRYOS

3 IVF Embryos

Cherry Creek Land Grant

*Connealy Clarity

19555171 *Breshie of Conanga 6988

*E W A Peyton 642

+*Powell Erica 9024

19427984 **Williams Prop Erica 255 110

#K C F Bennett Homestead

Cherry Crk Eva B27 M

#*Connealy Confidence Plus
Brelly of Conanga 367

*+Quaker Hill Manning 4EX9

#+*E W A 444 of 968 Progress

#+*G A R Prophet

*Williams Erica 812

	Sire	Dam
\$M	+85	+86
\$W	+64	+95
\$B	+202	+189
\$C	+347	+331

	CED	BW	WW	YW	ANGLE	CLAW	MILK	HP	CW	MARB	RE
♂	+7	+1.1	+76	+143	+44	+37	+21	+15.1	+67	+1.08	+99
♀	+9	+1.9	+98	+167	+43	+49	+31	+12.8	+80	+1.05	+93

37D ERICA EMBRYOS

3 IVF Embryos

+*Baldridge Alternative E125

*SG Salvation

19559741 **MGR JP Rita 7037

*E W A Peyton 642

+*Powell Erica 9024

19427984 **Williams Prop Erica 255 110

Poss Easy Impact 0119

Baldridge Blackbird A030

#+*Basin Payweight 1682
*MGR Rita 2145

*+Quaker Hill Manning 4EX9

#+*E W A 444 of 968 Progress

#+*G A R Prophet

*Williams Erica 812

	Sire	Dam
\$M	+65	+86
\$W	+61	+95
\$B	+231	+189
\$C	+365	+331

	CED	BW	WW	YW	ANGLE	CLAW	MILK	HP	CW	MARB	RE
♂	+8	+3.2	+78	+139	+41	+40	+22	+11.2	+83	+1.32	+96
♀	+9	+1.9	+98	+167	+43	+49	+31	+12.8	+80	+1.05	+93

• Consigned by: R-Value Farm

- An opportunity to select from either two genetic packages blending Connealy Clarity or SG Salvation with the proven R-value donor Powell Erica 9024.
- Powell Erica 9024 is one of the breed's highest growth females who also excels to the extreme top 1% of the breed for \$C value with a 2% ranking for \$M and balances a 10% ranking for both MB and REA traits.
- Embryo packages from this outstanding donor has sold to prominent programs throughout the breed as she consistently stamps her progeny with eye appeal such as her daughters selling as Lots 37A and 37B as well as transmitting unparalleled genetic merit for all end-product traits.



CONNELY CLARITY
The rare and valuable sire of Lot 37C.



SG SALVATION
The popular and proven sire of Lot 37D.



WILLIAMS PROP ERICA 255 110
The maternal granddam of Lots 37C and 37D.

MAR ERICA 1616 Select Hollywood



MAR ERICA 1616

The dam of Lot 38 and a full sister-in-blood to Linz Exemplify 71124.

38 HEIFER PREGNANCY

Due Date: 01-21-2023

*S S Enforcer E812
+Williams Hollywood 700-380
 19850747 +*Powell Erica 7312

SydGen Enhance
 #S S Miss Daybreak K011 3K17
 +*ECO Lombardi 1512
 +*Williams Prop Erica 255-895

#*R B Tour Of Duty 177

#*Werner War Party 2417

***M A R Erica 1616**
 18499816 +*MAR Erica Rito 1400

+*B A Lady 6807 305

#*A A R Ten X 7008 S A

*Highwood Erica Rito 209

	Sire	Dam
\$M	+95	+43
\$W	+97	+58
\$B	+231	+166
\$C	+395	+258

	CED	BW	WW	YW	ANGLE	CLAW	MILK	HP	CW	MARB	RE
S	+6	+2.5	+103	+181	+31	+36	+31	+11.2	+89	+1.44	+1.23
D	+7	+1.9	+71	+128	+51	+52	+23	+8.3	+60	+70	+86

Consigned by: Malek Angus Ranch

- An opportunity to select a confirmed heifer calf pregnancy due soon sired by the very popular and highly used \$100,000 one-half interest Williams Hollywood and produced from a proven and predictable donor.
- The donor dam of this pregnancy is a full sister-in-blood to the \$150,000 top-selling bull of the 2019 Linz Heritage Angus bull sale, Linz Exemplify 71124.
- The maternal granddam of this mating is a full sister to the \$100,000 valued MAR Erica Rita 1401 and the \$50,000 MAR Erica Rita 1806.
- A genetic combination that will no doubt soar to the extreme top of the breed for a multitude of economic relevant traits.



WILLIAMS HOLLYWOOD

The popular \$100,000 one-half interest sire of Lot 38.



LINZ EXEMPLIFY 71124 CHANGE FROM LAYOUT

The \$150,000 full brother in blood to the dam of Lot 38.

RB Lady Payweight 167-101



RB LADY PAYWEIGHT 167-101
She sells as Lot 39.

- **Consigned by: Riley Brothers Angus**
- This impressive female from the heart of the Riley Bros. program offers big-time donor potential as she blends the influential and highly proven Pathfinder sire Basin Payweight 1682 with the \$300,000 full sister to Tour of Duty, RB Lady Party 167-305.
- Her dam has been extremely influential in many programs throughout the breed and earned a progeny record of BR 2@92, WR 2@122, and YR 2@111 with UREA 48@101 and soars in her ability to transmit maternal power with 23 daughters currently in production combining for WR 41@103. In addition, RB Lady Party 167-305 is a full sister to RB Lady Denver 167-453 who produced the \$265,000 Ingram Heisman and she is also the dam of Kern Freight Train who is one of the breed's leading non-parent bulls for \$C value.

39	RB LADY PAYWEIGHT 167-101		Tattoo: 101							
	Birth Date: 12-17-2021	Cow # 20403404								
#*Basin Payweight 006S	#Vermilion Payweight J847	\$M	+65 45%							
#* Basin Payweight 1682	+Basin Lucy 3829	\$W	+85 2%							
17038724 21AR O Lass 7017	#HARB Pendleton 765 J H	\$B	+139 50%							
	21AR O Lass F24A	\$C	+245 50%							
#*Werner War Party 2417	#*Connealy Onward									
+*R B Lady Party 167-305	+BAAR USA Lady Jaye 489									
16984164 **B A Lady 6807 305	#Vermilion Dateline 7078									
	+G D Lady Hi Flyer 302									
CED	BIW	WW	YW	ANGLE	CLAW	MILK	HP	CW	MARB	RE
+5 60%	+3.3 90%	+84 4%	+136 15%	+47 45%	+52 60%	+39 2%	+13.1 30%	+69 10%	+37 80%	+62 55%



RB LADY PARTY 167-305
The \$300,000 dam of Lot 39.



RB LADY MAVERICK 167-1710
This highlight of the 2022 Riley Bros. sale is a maternal sister to Lot 39.

MAK Lady 426-2867



MAK LADY 426-2867

This impressive daughter of SG Salvation sells as Lot 40.

40 MAK LADY 426-2867

Birth Date: 01-15-2022

Cow # 20416186

Tattoo: 2867

*SG Salvation

19559741 **MGR JP Rita 7037

Poss Easy Impact 0119
Baldridge Blackbird A030
#**Basin Payweight 1682
*MGR Rita 2145

#*EXAR Denver 2002B

#*EXAR Upshot 0562B
+Exar Royal Lass 1067
#**Werner War Party 2417
+*B A Lady 6807 305

+*RB Lady Denver 167-426

18143481 **R B Lady Party 167-305

\$M	+42.95%
\$W	+62.30%
\$B	+202.3%
\$C	+304.10%

CED	BW	WW	YW	ANGLE	CLAW	MILK	HP	CW	MARB	RE
+1 90%	+3.9 95%	+81 10%	+146 5%	+43 25%	+49 45%	+26 50%	+8.4 85%	+85 2%	+75 40%	+93 15%

• Consigned by: Makovicka Angus

- An extremely well-made beautiful fronted daughter of the proven high-performance sire SG Salvation backed by the high-income producing Lady cow family.
- The dam of this heifer sold as the \$60,000 lead-off Lot 1 female of the past Riley Bros. sale and is a full sister to the very popular RB Lady Denver 167-453 and RB Lady Denver 167-426 - All daughters of the \$300,000 RB Lady Party 167-305.
- There are currently 11 maternal sisters to this female in production soaring with an average weaning ratio of 109 on 15 head. In addition, RB Lady Denver 167-426 has earned a progeny record of %IMF 10@108.



RB LADY DENVER 167-426

The \$60,000 dam of Lot 40.



SG SALVATION

One of his top daughters sells as Lot 40.

Ernst Lady Regiment 9206-204



ERNST LADY REGIMENT 9206-204
This daughter of Wilkes Regiment 9035 sells as Lot 41.

- **Consigned by: Ernst Cattle Co.**
- Exceptional growth traits with excellent end-product values and high \$ indexes in this daughter of the extremely popular Select Sires AI sire, Wilkes Regiment 9035.
- The dam of this female blends the \$40,000 V A R Enterprise 6229 with the \$42,500 RB Lady Denver 167-453.
- Exciting genetics with an EPD profile that ranks among the breed's very best for multiple traits and backed by one of the breed's all-time high income-producing cow families.

41	ERNST LADY REGIMENT 9206-204									
	Birth Date: 03-08-2022	Cow # 20335468	Tattoo: 204							
*WAR Cavalry B063 Z044	#*Connealy Cavalry 1149									
*Wilks Regiment 9035	War CC&7 Z044 X029									
19401188	*V A R Empire 3037									
*Vintage Chloe 6137	*V A R Chloe 2227									
*V A R Enterprise 6229	#*V A R Discovery 2240		\$M +52 80%							
*Linz Lady Enterprise 453-9206	*Deer Valley Henrietta 3131		\$W +77 10%							
19427553	#*EXAR Denver 2002B		\$B +220 1%							
*RB Lady Denver 167-453	*R B Lady Party 167-305		\$C +338 2%							
CE	BW	WW	YW	ANGLE	CLAW	MILK	HP	CW	MARB	RE
+6 55%	+2.6 80%	+88 2%	+168 1%	+45 30%	+43 20%	+34 10%	+10.8 60%	+97 1%	+87 30%	+1.12 4%



WILKES REGIMENT 9035
One of his extreme high growth daughters sells as Lot 41.



RB LADY DENVER 167-453
The \$42,500 maternal granddam of Lot 41.

Stone Creek Lady 514-2106



STONE CREEK LADY 514-2106
She sells as Lot 42.

42 **STONE CREEK LADY 514-2106**

Birth Date: 12-26-2021

Cow # 20370321

Tattoo: 2106

+*Deer Valley Growth Fund

+*Basin Payweight 1682

*Car Don Annuity 114

+*Deer Valley Rita 36113

19720973

+*CAR Don Blackbird 935

+*Quaker Hill Rampage 0A36

+*EF Blackbird 3241

#*MAR Innovation 251

#*Connealy Impression

+*LHA Lady Innovation 3189-514

#*MAR Final Kahuna 856

18240244

+*RB Lady Complete 890-3189

#*Summitcrest Complete 1P55

*R B Lady Standard 305-890

\$M	+70	30%
\$W	+96	1%
\$B	+181	10%
\$C	+305	10%

CED	BW	WW	YW	ANGLE	CLAW	MILK	HP	CW	MARB	RE											
+4	70%	+2.9	85%	+106	1%	+181	1%	+53	75%	+51	55%	+30	25%	+9.3	80%	+84	2%	+55	65%	+1.14	3%

• Consigned by: Stone Creek Angus

- Stone Creek Lady 514-2106 is a standout donor prospect with explosive growth EPD's backed with plenty of style, shape and phenotype. This is a special opportunity to acquire an outstanding heifer that offers tremendous value and unlimited genetic opportunity to take your program to the next level.
- This heifer stems from one of the most prolific cow families in the

Angus breed, The "LADY" cow family. A cow family that not only displays exceptional performance data but backs it up as well!

- She is sired by Krebs Ranch Standout Car Don Annuity 114. This sire's eye appeal and muscle are worthy of a show ring backdrop and his EPD's read like a top performance bull. He truly has combined the best of both worlds.
- Stone Creek Annuity 2106 ranks in the top 1% of the angus breed for WW, YW, CW & \$W; top 2% for RADG, RE, \$AxJ & \$F, top 3% for YH, top 4% for \$C; top 5% for MW, DOC, WW & \$M and top 10% for MH, \$AxH & \$B
- Maternal Sisters to the dam of Stone Creek Lady 2106 include: the \$105,000 valued feature through the Linz Heritage Sale going to Bruiser & Blade of Ohio; the \$87,500 top-selling bred heifer going to Wilks Ranch of Texas and through the Linz 2019 production sale Linz Lady President 3189-9221 sold to Herbster Angus for one-half interest at \$105,000 for a \$210,000 valuation. A Full sister to 1013's dam is the \$50,000 LHA Lady Innovation 3189-513, who was the second top-selling female of the 2017 National Western Stock Show Foundation Female Sale going to Rooney Angus Ranch of Wisconsin and the \$31,000 feature through the 2019 fall production sale, Linz Lady Inn 3189-7801 going to Ingram Angus of Tennessee.



LHA LADY INNOVATION 3189-514
The dam of Lot 42.



CAR DON ANNUITY 114
A daughter sells as Lot 42.

RB Lady Iconic 02-266



RB LADY ICONIC 02-266
This daughter of DB Iconic G95 sells as Lot 43.

- **Consigned by: Riley Brothers Angus**
- One of the highest DB Iconic daughters in the entire breed for both weaning and yearling growth is this outstanding individual who also excels for carcass traits as well as for \$C value.
- She posted an impressive low birth ratio of 82 along with a weaning ratio of 136 in the Riley program from her two-year-old dam.
- Her dam is a direct daughter of the Pathfinder and long-time Riley donor CAV Lady Party 2145-611.
- Incredible genetics with breed impacting EPD traits.

43	RB LADY ICONIC 02-266		Tattoo: 266							
	Birth Date: 03-10-2022	Cow #20448419								
*Musgrave 316 Stunner	*LD Capitalist 316									
*DB Iconic G95	#MCATL Blackbird 831-1378									
19611994	*DB Ms Discovery D13	#*V A R Discovery 2240								
		DB Ms Final Tool 4120								
	*Poss Maverick	#**Basin Payweight 1682								
*RB Lady Maverick 611-02	Poss Pride 5163	#**Werner War Party 2417								
19837869	#**CAV Lady Party 2145-611	*RB Lady Sterling 890-2145								
			\$M	+34 95%						
			\$W	+86 2%						
			\$B	+220 1%						
			\$C	+319 3%						
CEU	BW	WW	YW	ANGLE	CLAW	MILK	HP	CW	MARB	RE
+10 20%	+7 40%	+100 1%	+171 1%	+45 30%	+54 65%	+24 65%	+5.3 95%	+88 1%	+1.42 3%	+95 15%

Explosive
TRAITS!



RB LADY STERLING 890-2145
The foundation dam of Lot 43.

Crouch Lady Iconic 222



CROUCH LADY ICONIC 222
This impressive Iconic daughter sells as Lot 44.

44 CROUCH LADY ICONIC 222

Birth Date: 02-22-2022

Cow #20414883

Tattoo: 222

*Musgrave 316 Stunner

+*LD Capitalist 316

*DB Iconic G95

#MCATL Blackbird 831-1378

19611994 *DB Ms Discovery D13

#*V A R Discovery 2240

DB Ms Final Tool 4120

+*G A R Ashland

*G A R Early Bird

*Crouch Lady Ashland 004

+*Chair Rock Ambush 1018

19741696 *BAF Lady Identity 02-357

#*Koupals B&B Identity

+*R B Lady Standard 305-02

\$M	+57.70%
\$W	+78.5%
\$B	+192.5%
\$C	+306.10%

CED	BW	WW	YW	ANGLE	CLAW	MILK	HP	CW	MARB	RE										
+0.95%	+2.9	+85%	+97	1%	+158	2%	+49	55%	+44	25%	+19	95%	+9.1	80%	+88	1%	+77	40%	+95	15%

Consigned by: Crouch Angus Farm

- Exceptional weaning and yearling growth traits in this fancy daughter of iconic backed by the high-income producing lady cow family.
- Her dam is a direct daughter of the \$72,000 one-half interest BAF Lady Identity 02-357 who sold to RCA Cattle Company in 2020.
- Her dam is a maternal sister to the \$60,000 Crouch Lady Legend 910 and the \$20,000 Crouch Lady Cowboy Up 780.
- Proven genetics with big time EPDs from the Lady family.



BAF LADY IDENTITY 02-357
The maternal granddam of Lot 44.



RB LADY STANDARD 305-02
The \$120,000 foundation dam of Lot 44.

Lady B27 X Sterling Pacific



DECADES LADY B27
The donor dam of Lot 45.

45A LADY EMBRYOS

3 IVF Embryos (Sexed HC)

**Hoover No Doubt
+*Sterling Pacific 904
19444025 **Baldrige Isabel B082

#*Mogck Bullseye
*Miss Blackcap Ellston J2
#*G A R Prophet
*Baldrige Isabel Y69

#*Basin Payweight 1682
+*Decades Lady B27
18836280 **RB Lady 7125-890-2170

#*Basin Payweight 006S
21AR O Lass 7017
#G A R Objective 7125
*R B Lady Standard 305-890

	Sire	Dam
\$M	+81	+77
\$W	+65	+87
\$B	+184	+164
\$C	+320	+290

	CED	BW	WW	YW	ANGLE	CLAW	MILK	HP	CW	MARB	RE
\$	+9	+1.6	+80	+140	+36	+37	+18	+13.4	+59	+1.32	+56
D	+11	-.3	+73	+115	+4.0	+4.4	+36	+8.2	+59	+8.0	+81

Consigned by: Bever Angus

- An opportunity to select from either a set of sexed heifer embryos sired by the very popular AI sire Sterling Pacific or the \$110,000 Baldrige Pappy, and backed by the popular and proven high income producing Lady cow family.
- The donor dam of these embryos serves as a donor in the Bever Angus program and has earned a progeny record of BR 2@96, WR 1@111, and YR 1@100. Her dam sold as the lead-off Lot 1 female in the past Riley Bros. sale for \$64,000 and she in turn is a direct daughter of the \$175,000 RB Lady Standard 305-890 who has served as a donor in the Herbster program. In addition, RB Lady 7125-890-2170 is a maternal sister to the \$275,000 Gaffney Gamechanger and the \$250,000 Gaffney Game On.



STERLING PACIFIC 904
The popular sire of the embryo selling as Lot 45.

45B LADY EMBRYOS

3 IVF Embryos

**Hoover No Doubt
+*Baldrige Pappy
19235838 **Baldrige Isabel B061

#*Mogck Bullseye
*Miss Blackcap Ellston J2
#*G A R Prophet
*Baldrige Isabel Y69

#*Basin Payweight 1682
+*Decades Lady B27
18836280 **RB Lady 7125-890-2170

#*Basin Payweight 006S
21AR O Lass 7017
#G A R Objective 7125
*R B Lady Standard 305-890

	Sire	Dam
\$M	+87	+77
\$W	+70	+87
\$B	+178	+164
\$C	+318	+290

	CED	BW	WW	YW	ANGLE	CLAW	MILK	HP	CW	MARB	RE
\$	+7	+1.2	+76	+133	+34	+4.0	+23	+13.0	+59	+1.17	+86
D	+11	-.3	+73	+115	+4.0	+4.4	+36	+8.2	+59	+8.0	+81

Consigned by: Bever Angus

Enna of Conanga 610 161x Iconic



ENNA OF CONANGA 610 161X
The donor dam of Lot 46.

46 HEIFER PREGNANCY

Due Date: 04-05-2023

*Musgrave 316 Stunner
*DB Iconic G95
19611994 *DB Ms Discovery D13

*LD Capitalist 316
#MCATL Blackbird 831-1378
#*V A R Discovery 2240
DB Ms Final Tool 4120

+*Connealy Upscale
+*Enna of Conanga 610 161X
20126301 *Ensa of Conanga 610

*Plattemere Weigh Up K360
Elbanna of Conanga 1209
#*EF Commando 1366
Emmy of Conanga 4105

	Sire	Dam
\$M	+53	+98
\$W	+84	+72
\$B	+217	+185
\$C	+334	+338

	CED	BW	WW	YW	ANGLE	CLAW	MILK	HP	CW	MARB	RE
\$	+5	+1.3	+92	+161	+51	+58	+29	+11.0	+77	+1.61	+80
D	+2	+1.4	+74	+129	+32	+32	+25	+15.0	+62	+1.00	+97

- **Consigned by: Sankey Angus and Eagle Grip Cattle Co.**
- A genetic blending of the popular Genex sire DB Iconic G95 with a maternal sister to the Grimmus herd sire Connealy Reformed.
- The donor dam of this pregnancy is a member of the Eagle Grip and Sankey ET Program and is backed by a long line of high maternal Connealy-bred females.
- The maternal granddam of this pregnancy Ensa of Conanga 610 has earned a progeny record of WR 2@101 and YR 1@107 in the Connealy program and she too has served as a donor with an excellent ultrasound progeny record recording %IMF 10@116 and UREA 10@101.
- A genetic blending that should excel for extreme growth traits as well as for end-product and \$ indexes.



DB ICONIC G95

This popular Genex sire is the sire of Lot 46.



CONNELY REFORMED

The maternal brother to the dam of Lot 46.

Bever Lucy 201



BEVER LUCY 201
She sells as Lot 47.

- **Consigned by: Bever Angus**
- A great opportunity to select this excellent daughter of EXAR Guru 8719B backed by the high-income producing Basin Lucy cow family.
- Her full sisters include the \$120,000 EZAR Lucy 0033, the \$55,000 EZAR Lucy 0024 featured in the Etta Stow Pines program, as well as EZAR Lucy 1377 who sold as the highlight of the Fall 2022 EZ Angus sale.
- The dam of this female was the \$34,000 top-selling donor of a past Riverbend Ranch sale and has earned an impressive ultrasound progeny record of %IMF 30@101 and UREA 30@103. Plus, she has 11 daughters in production combining for WR 17@105.
- Proven genetics with one of the breed's most treasured cow families.

47 BEVER LUCY 201

Birth Date: 01-21-2022	Cow # 20326466	Tattoo: 201								
*EXAR Monumental 6056B	3F Epic 4631									
+*EXAR Guru 8719B	*FWY 7008 of C085 4029									
19066319	+*EXAR Blackcap 9384									
	+*V A R Blackcap 1059									
	+*Riverbend Peerless 0016	\$M +61 55%								
+*Riverbend Lucy A608	+*Riverbend Blackcap S762	\$W +77 10%								
18102991	+*Basin Lucy S161	\$B +191 5%								
	#Vermilion Payweight J847	\$C +309 5%								
	+Basin Lucy 3829									
CED	BW	WW	YW	ANGLE	CLAW	MILK	HP	CW	MARB	RE
+8 35%	+5 35%	+75 15%	+128 20%	+49 55%	+55 70%	+33 10%	+13.3 30%	+69 10%	+98 20%	+91 15%

All flush sisters to Lot 47.



EZAR LUCY 0033



EZAR LUCY 1377



EZAR LUCY 0024

Vintage Lucy 5360 X Teton



LONG TETON 107
The high growth sire of Lot 48.

48 LUCY EMBRYOS

4 Conventional Embryos

#+*Tehama Tahoe B767

*Tehama Upward Y238

*Long Teton 107

**Tehama Mary Blackbird Y684

20274029 *Long Lucy 909

**Deer Valley Growth Fund

*Schafer Hickory Lucy E320

#+*V A R Index 3282

#+G A R Ingenuity

*Vintage Lucy 5360

**Sandpoint Blackbird 8809

18211417 #+*V A R Lucy 2334

#EXAR 263C

+V A R Lucy 9235

	Sire	Dam
\$M	+90	+57
\$W	+107	+51
\$B	+169	+132
\$C	+309	+228

	CED	BW	WW	YW	ANGLE	CLAW	MILK	HP	CW	MARB	RE
\$	+10	+7	+105	+180	+44	+39	+32	+10.5	+77	+66	+88
D	+12	+4	+49	+98	+38	+34	+32	+10.1	+36	+59	+61

• Consigned by: Valley Oaks Angus

- An opportunity to select a package of embryos sired by one of the high-growth sons of Tehama Tahoe B767 available today, Long Teton 107.
- Long Teton 107 excels for extreme growth and high maternal traits while offering superior foot quality and is a result of mating the high maternal Select Sires AI sire Tehama Tahoe B767 to the 2020 PGS Grand Champion Long Lucy 909.
- Donor dam of these embryos has served as a donor in the Valley Oaks program and is a direct daughter of the past top-selling bull of a Vintage Angus Ranch bull sale, V A R Index 3282, tracing to the \$210,000 valued Basin Lucy 178D.
- Expect the resulting progeny from this mating to excel for maternal and growth traits and offer superior foot quality.



BASIN LUCY 178E
The foundation dam of Lot 48.

Exciting
FRESH GENETICS!

Lucy X Fireball



BCC LUCY ENH 5094-9583
The donor dam of Lot 49.

- **Consigned by: CWT Angus**
- An opportunity to select a pregnancy due early Spring sired by the popular breed leading MB sire GB Fireball backed by the great Lucy cow family.
- The donor dam of this pregnancy was bred in the Byrd Cattle Company program where she posted an individual weaning ratio of 112 along with %IMF - 116 and UREA - 128, and she records WR 1@106 with YR 1@105, %IMF 1@108, and UREA 1@111.
- A maternal sister to this pregnancy, BCC Lucy Clarity 9584-1516 sold as a highlight of a Fall 2022 Byrd Cattle Company Sale.
- Tremendous growth blended with extreme MB traits in this blending of Fireball and Enhance with the high maternal excellence of Hoover Dam and the great Lucy cow family.

49 HEIFER PREGNANCY

Due Date: 02-23-2023

*G A R Sure Fire 6404
***GB Fireball 672**
18690054 *GB Anticipation 432

#*G A R Sure Fire
*G A R Complete N281
*G A R Anticipation
GB Ambush 269

SydGen Enhance
+*B C C Lucy Enh 5094-9583
19796164 *B C C Lucy HD 7554-5094

*SydGen Exceed 3223
SydGen Rita 2618
#*Hoover Dam
*B C C Lucy Int N747-7554

	Sire	Dam
\$M	+61	+67
\$W	+59	+70
\$B	+266	+208
\$C	+406	+337

	CED	BW	WW	YW	ANGLE	CLAW	MILK	HP	CW	MARB	RE
S	+17	-.1	+67	+129	+46	+49	+24	+10.1	+69	+2.30	+1.26
D	+4	+3.2	+81	+153	+48	+47	+27	+12.1	+76	+1.16	+85



BCC LUCY CLARITY 9584-1516
A maternal sister to Lot 49.



GB FIREBALL
The popular and elite MB sire of Lot 49.

S/A Lady 1134-051



S/A LADY 1134-051
This Clarity daughter sells as Lot 50.

50 S/A LADY 1134-051
 Birth Date: 12-08-2021 Cow # *20325535 Tattoo: 051
 Cherry Creek Land Grant #K C F Bennett Homestead
 *Connealy Clarity Cherry Crk Eva B27 M
 19555171 *Breshie of Conanga 6988 #*Connealy Confidence Plus
 Brely of Conanga 367
 #*Koupals B&B Identity #*Sitz Upward 307R
 #*S/A MC Lady 4182-1134 #B&B Erica 605
 17859516 +S/A MC Lady 5M4-4182 #*Kesslers Frontman R001
 +Sinclair Lady 5M4 4465

\$M	+100	1%
\$W	+74	10%
\$B	+182	10%
\$C	+336	2%

CED	BW	WW	YW	ANGLE	CLAW	MILK	HP	CW	MARB	RE											
+3	80%	+2.4	80%	+79	10%	+145	10%	+36	4%	+50	50%	+28	35%	+19.9	1%	+73	10%	+74	40%	+65	50%

- **Consigned by: Strasburg Angus**
- This exciting Clarity daughter ranks above all other Clarity daughters in her combination of heifer pregnancy and docility combined.
- Her Pathfinder dam has earned a record of WR 5@107 and YR 4@105 with UREA 12@102.
- A rare opportunity to invest in an incredible daughter of clarity backed by the high maternal Lady cow family offering a superb \$M/\$C combination.



S/A MC LADY 4182-1134
The dam of Lot 50.



CONNELY CLARITY
The rare and valuable sire of Lot 50.

S/A Evergreen 066-0211



S/A EVERGREEN 066-0211
She sells as Lot 51.

- **Consigned by: Strasburg Angus**
- This exciting female backed by the high maternal and popular Evergreen cow family stacks multiple generations of proven and rare AI sires in her pedigree.
- Her dam by the proven power sire in the Alta Genetics lineup has earned an incredible progeny record of WR 3@109 and YR 2@113 and she has three daughters in production combining for WR 4@110.
- A solid EPD profile highlighted with extra MB and a top \$M/\$C combination.

51 S/A EVERGREEN 066-0211

Birth Date: 12-20-2021

Cow # 20325536

Tattoo: 0211

Cherry Creek Land Grant

#K C F Bennett Homestead

*Connealy Clarity

Cherry Crk Eva B27 M

19555171 *Breshie of Conanga 6988

#*Connealy Confidence Plus

Brelly of Conanga 367

+*Hoover No Doubt

#*Mogck Bullseye

*S/A Evergreen 2144-066

*Miss Blackcap Ellston J2

18860091 *S/A Evergreen 0189-2144

#*Koupals B&B Identity

+*S/A Evergreen 25N-0189

\$M	+89	2%
\$W	+67	20%
\$B	+174	15%
\$C	+315	4%

CED	BW	WW	YW	ANGLE	CLAW	MILK	HP	CW	MARB	RE											
+7	45%	+2.7	85%	+77	10%	+136	15%	+42	20%	+37	10%	+22	80%	+14.3	20%	+58	30%	+1.08	15%	+86	20%



CONNELY CLARITY
The sire of Lot 51.



S/A EVERGREEN 2144-066
Dam of Lot 51.

Maternal Sibs to T/D Bootheel 78445



RIVERHILLS ROSA X374

Embryos from this powerful producing dam sell as Lot 52.

52 ROSA EMBRYOS

3 IVF Embryos

Cherry Creek Land Grant

*Connealy Clarity

19555171 *Breshie of Conanga 6988

#K C F Bennett Homestead

Cherry Crk Eva B27 M

##*Connealy Confidence Plus

Brelly of Conanga 367

##*Sitz Upward 307R

*River Hills Rosa X374

16760271 #River Hills Rosa R300

##*Connealy Onward

*Sitz Henrietta Pride 81M

##Bon View New Design 1407

Plattemere Rosa 324

	Sire	Dam
\$M	+85	+59
\$W	+64	+66
\$B	+202	+151
\$C	+347	+255

	CED	BW	WW	YW	ANGLE	CLAW	MILK	HP	CW	MARB	RE
S	+7	+1.1	+76	+143	+44	+37	+21	+15.1	+67	+1.08	+99
D	+8	+1.4	+65	+122	+37	+59	+34	+13.4	+51	+54	+81

• Consigned by: Powers Angus Ranch

- Unlimited genetic merit in this package of embryos sired by the extremely rare and valuable Connealy Clarity and produced from a proven donor.
- The dam of these embryos who served as a longtime donor in the T/D Angus program has an incredible progeny record with WR 2@121 and YR 2@116 and also an ultrasound progeny record with %IMF 65@103 and UREA 65@102 - She is also the dam of the \$30,000 T/D Bootheels 7 8445 who posted a %IMF scan of 137 and UREA ratio of 105 in the T/D program plus she has produced additional sons who have sold for an average of over \$10,000 and is also the dam of the \$9,000 T/D Rosa 9381.
- The maternal granddam of these embryos is a proven pathfinder with a record of BR 4@96, WR 4@105, and YR 3@106 and is backed by a long line of females bred in the Snyder Bros program.



T/D BOOTHEEL 7 8445

The \$30,000 maternal brother to Lot 52.

Maternal Sibs TO BOOTHEEL 7!

A Susanna Daughter And Flush



CAM VERCINGETORIX A401
She sells as Lot 53.

53 CAM VERCINGETORIX A401
 Birth Date: 09-20-2021 Cow # *20305012 Tattoo: A401

+*G A R Ashland
 #*HPCA Vercingetorix
 19346476 *H P C A Sure Fire P245

+*G A R Early Bird
 #*Chair Rock Ambush 1018
 #*G A R Sure Fire
 #*H P C A Sunrise 2172

#*G A R Prophet
 #*Pine View Susanna D421
 18764770 #*Pine View Susanna B004

#C R A Bextor 872 5205 608
 +G A R Objective 1885
 #*Connealy Black Granite
 #SH Objective 9001

\$M	+100	1%
\$W	+88	1%
\$B	+183	10%
\$C	+337	2%

CED	BW	WW	YW	ANGLE	CLAW	MILK	HP	CW	MARB	RE											
+14	3%	+9	45%	+81	10%	+138	10%	+41	15%	+51	55%	+33	10%	+16.3	10%	+64	20%	+1.25	10%	+93	15%

- **Consigned by: CAM Ranches**
- A super \$M/\$C combination in this double-digit CED daughter of Pine View Susanna B421.
- Her sire ranks at the extreme top of the breed for reducing PAP score EPD and is a direct son of the \$625,000 one-half interest HPCA Surefire P245.
- The dam of this female excels in her ability to transmit MB recording %IMF 13@103.

54 FLUSH

*Jindra 3rd Dimension
 #*Jindra Acclaim
 17972810 +Jindra Blackbird Lassy 1111

#*Jindra Double Vision
 Jindras Sapphire J 417
 #*Connealy Impression
 Jindras Enchantress J 102

#*V A R Reserve 1111
 #*GVC Susanna C042
 18347956 #*SH Objective 9001

#*B/R New Day 454
 #*Sandpoint Blackbird 8809
 #*S S Objective T510 0T26
 +J/R Susanna of 5050 579F

Sire		Dam	
\$M	+27	+54	
\$W	+59	+57	
\$B	+203	+145	
\$C	+290	+242	

CED	BW	WW	YW	ANGLE	CLAW	MILK	HP	CW	MARB	RE
\$ +4	+1.2	+70	+141	+49	+49	+29	+11.4	+81	+73	+64
D +11	+3	+64	+116	+46	+47	+22	+10.5	+29	+96	+94



GVC SUSANNA C042
A flush her to daughter sells as Lot 54.

- **Consigned by: 570 Genetics**
- **Selling a flush to the bull of the buyer's choice with the guarantee of at least six grade-one embryos. Buyer will receive up to ten at the bid price and has the option to obtain additional embryos at the pro-rated price. Semen and flush costs are the responsibility of the buyer.**
- She is a direct daughter of the influential GVC Susanna C042 who produced several highlights in the Green Valley Dispersal and has 15 daughters in production combining for WR 20@103. Plus, a maternal sister produced the \$240,000 top-selling female of a past Green Valley sale to the Butz and Soaring Eagle programs.

A Karama Flush



MILL BRAE STIM KARAMA 3025

An opportunity to flush this proven maternal granddam to 4 Sons Rescue sells as Lot 55.

55 FLUSH

#H A Power Alliance 1025
Connealy Stimulus 8419
 16205004 Black Creesa of Conanga 5332

#Sitz Alliance 6595
 #H A Rito Lady 4167
 #+*G A R Grid Maker
 Black Crust of Conanga

#TC Aberdeen 759
Mill Brae AB Karama 1304
 17028011 #Mill Brae 004 Karama 7252

#C R A Bextor 872 5205 608
 #+TC Blackbird 4034
 #S A V 8180 Traveler 004
 Mill Brae 616 Karama 4150

	Sire	Dam
\$M	+81	+63
\$W	+57	+53
\$B	+143	+124
\$C	+266	+224

	CEU	BW	WW	YW	ANGLE	CLAW	MILK	HP	CW	MARB	RE
\$	+9	+1.7	+50	+84	+.40	+.41	+26	+12.1	+31	+.81	+.74
U	+11	-.6	+46	+82	+.45	+.45	+31	+9.7	+31	+.49	+.61

• Consigned by: Sankey Angus

- Selling a flush to the bull of the buyer's choice with a guarantee of six transferrable embryos with a buyer receiving up to ten at the bid price with the option to purchase additional embryos at the prorated price. Buyer will need to supply the semen for the flush.

- An incredible opportunity to flush this proven producer who was bred in the Mill Brae program and who is best known as the dam of Mill Brae I Karama 7237 to the bull of your choice.
- Her famous daughter, Karama 7237, serves as a prolific donor in the 4 Sons program in KY and recently produced the \$110,000 4 Sons Karama 6J15, and the \$105,000 4 Sons Karama 8K4 \$37,500 4 Sons Ransom 6J10, the \$20,000 4 Sons Salvation 6J16 and also is the dam of the \$150,000 4 Sons Rescue.
- This flush opportunity is backed by a long line of high maternal females bred in the historic Mill Brae program in Kansas and the donor dam herself posted an impressive low birth ratio of 95 along with WR - 104 and UREA - 111 in that total performance program. Now, she is carrying on the high maternal traits of the Karama cow family producing eight calves with an average calving interval of 365 days.



MILL BRAE KARAMA 7237

The powerful and productive dam of Mill Brae Stim Karama 3025.



4 SONS RESCUE

The \$150,000 ST Genetics grandson of Mill Brae Stim Karama 3025.

Nar Protégé 9226 Embryos



G A R PROTÉGÉ M532
The maternal granddam of Lots 56A, 56B, and 56C.

56A BLACKCAP EMBRYOS

3 IVF Embryos

Cherry Creek Land Grant
Connealy Clarity
19555171 *Breshie of Conanga 6988

#K C F Bennett Homestead
Cherry Crk Eva B27 M
#*Connealy Confidence Plus
Brelly of Conanga 367

**FF Rito Righteous 6R41
+*M A R Protege 9226
19672822 +G A R Protege M532

**Quaker Hill Rampage 0A36
+*FF Rita 3R30 of 9Q23 5M2
#**GAR-EGL Protege
+G A R Objective 1898

	Sire	Dam
\$M	+85	+63
\$W	+64	+68
\$B	+202	+217
\$C	+347	+344

	CED	BW	WW	YW	ANGLE	CLAW	MILK	HP	CW	MARB	RE
\$	+7	+1.1	+76	+143	+44	+37	+21	+15.1	+67	+1.08	+99
D	+9	+1.3	+79	+146	+44	+54	+21	+11.5	+81	+1.17	+1.29

56B BLACKCAP EMBRYOS

3 IVF Embryos

*Musgrave 316 Stunner
DB Iconic G95
19611994 *DB Ms Discovery D13

+*LD Capitalist 316
#MCATL Blackbird 831-1378
#*V A R Discovery 2240
DB Ms Final Tool 4120

**FF Rito Righteous 6R41
+*M A R Protege 9226
19672822 +G A R Protege M532

**Quaker Hill Rampage 0A36
+*FF Rita 3R30 of 9Q23 5M2
#**GAR-EGL Protege
+G A R Objective 1898

	Sire	Dam
\$M	+53	+63
\$W	+84	+68
\$B	+217	+217
\$C	+334	+344

	CED	BW	WW	YW	ANGLE	CLAW	MILK	HP	CW	MARB	RE
\$	+5	+1.3	+92	+161	+51	+58	+29	+11.0	+77	+1.61	+80
D	+9	+1.3	+79	+146	+44	+54	+21	+11.5	+81	+1.17	+1.29

56C BLACKCAP EMBRYOS

3 IVF Embryos

+*G A R Ashland
G A R Home Town
19266718 +*Chair Rock Sure Fire 6095

*G A R Early Bird
+*Chair Rock Ambush 1018
#**G A R Sure Fire
+*Chair Rock Progress 3005

**FF Rito Righteous 6R41
+*M A R Protege 9226
19672822 +G A R Protege M532

**Quaker Hill Rampage 0A36
+*FF Rita 3R30 of 9Q23 5M2
#**GAR-EGL Protege
+G A R Objective 1898

	Sire	Dam
\$M	+64	+63
\$W	+58	+68
\$B	+218	+217
\$C	+347	+344

	CED	BW	WW	YW	ANGLE	CLAW	MILK	HP	CW	MARB	RE
\$	+14	-.5	+61	+117	+47	+61	+26	+12.5	+53	+1.73	+1.09
D	+9	+1.3	+79	+146	+44	+54	+21	+11.5	+81	+1.17	+1.29

- **Consigned by: Woirhaye Cattle Company**
- An opportunity to choose from three exciting matings blending the \$60,000 rare and valuable Connealy Clarity or the popular Genex sire DB Iconic G95 or G A R Home Town with the outstanding daughter of Rito Righteous.
- The donor dam of these embryos holds the #2 position in the entire breed for \$C value among all daughters of FF Rito Righteous and she in turn is a direct daughter of G A R Protégé M532 who was the dam of EXAR Blackcap 4892 who produced the Genex sire 44 Blackstone 379G.
- Breed-leading genetics in each of these packages.

Opportunity
THREE EXCITING MATINGS

JANUARY 5



A LASTING LEGACY

The Cattlemen's Congress is a stock show for cattlemen and women managed by cattlemen and women. The Cattlemen's Congress is an opportunity for breeders across North America to showcase their top genetics and connect with fellow beef producers in a central location, in the heart of cattle country.

In 2020, the Cattlemen's Congress was created by a group of visionaries led by Mr. Bob Funk. It's goal was to provide a world class event specifically designed for cattlemen and women to gather, showcase and market their elite cattle genetics. The Inaugural Cattlemen's Congress was held in January 2021 and brought nearly 10,000 head of cattle, more than 2,700 exhibitors and thousands of producers to one place, which in turn created record breaking National Sales in its inaugural year.

In 2022, Cattlemen's Congress continued to shatter records both in the showing and in the sale arena. Here in Oklahoma City, our board and staff continue to work to make improvements to Cattlemen's Congress in order to meet the needs of exhibitors like yourself!

The Cattlemen's Congress is excited to welcome everyone back to the 2023 show, here in Oklahoma City, January 1-14, 2023.

ANGUS *at the* CONGRESS

5:00 PM | Thursday **January 5, 2023**
Held during at the Cattlemen's Congress, Oklahoma City, OK

**LIVE FEMALES | FEMALES ON VIDEO
PICK OF HERDS | PREGNACIES | EMBRYO PACKAGES**



AUCTIONEER

Joel Birdwell405-368-1058

SALE DAY PHONES

Rance Long918-510-3464
Laramie Long317-409-9212

LIVESTOCK PUBLICATION REPRESENTATIVES

Jeff Mafi 816-344-4266.....Angus Journal
Levi Landers 308-730-1396.....Angus Journal
Adam Conover 816-676-8560.....Angus Journal
Alex Tolbert 706-338-8733.....Angus Journal
Casey Jentz 608-234-1998.....Angus Journal
Rod Geppert 605-295-3673.....Angus Journal
Reece Tuckwiller 308-360-3048.....Angus Journal
David Gazda 706-296-7846.....Angus Journal
Radale Tiner 979-742-2663.....Angus Journal
Kurt Kangas 661-706-2041.....Angus Journal
Will Harsh 740-272-1386.....Angus Journal
Jared Patterson 208-312-2386.....Angus Journal
Doug Paul 405-820-3982.....Special Assignment

CATTELMEN'S CONGRESS BOARD OF DIRECTORS

Jarold Callahan	Jaclyn Boester
Tyler Norvell	Blake Nelson
Bob Funk	Shane Bedwell
Jimmy Harrel	

A special thank you to the board of directors for the Cattlemen's Congress for providing this opportunity for cattlemen and women to showcase their high-quality genetics.

SALE MANAGED BY



RANCE LONG
918.510.3464
rlong@rancelong.com
www.rancelong.com

INSURANCE



James F Bessler
(815) 762-2641
E-mail: jamesfbessler@yahoo.com

SALE LOCATION

Held at the Oklahoma City State Fair Grounds in Oklahoma City, Oklahoma

HEALTH

All the cattle selling will be accompanied by proper health certificates for shipment.

LIABILITY

Everyone attending the sale does so at their own risk. The Sale Management staff, Auctioneers or Sale Staff assume no liability to loss of property or to accidents that might occur.

TRUCKING

We will be glad to assist you in coordinating trucking for the cattle that are on site as well as those that will be selling on video.

TERMS AND CONDITIONS

All of the cattle sell under the suggested terms of the American Angus Association. Any announcements that take place during the sale take precedence over printed material.

Once the sale is complete it is the responsibility of the seller to make contact with the buyer to confirm the buyer's shipping arrangements. On all embryo purchases - They sell with a 50% guarantee on even numbered embryos or one less than half if an odd number is offered - any other guarantee will be listed in the catalog or announced. All of the information pertaining to the embryos is listed and any changes will be available on an update sheet or announced - IT IS THE RESPONSIBILITY OF THE SELLER TO DISCLOSE ALL INFORMATION PERTAINING TO THE EMBRYOS PRIOR TO SELLING.

Any claims related to frozen genetics need to be communicated direct to the seller within 180 days of the sale date.

LiveAuctions.TV

JANUARY 5

2023
ANGUS
at the
CONGRESS


JANUARY 5, 2023 • 5 PM. • SUPER BARN SALE ARENA