

M A I N E - A N J O U
BRIGHT
L I G H T S
Sale



SATURDAY, JANUARY 7, 2023

Earlier start time! 2:30 p.m. at the Oklahoma State Fairgrounds Super Barn Sale Arena

Held in conjunction with the Cattlemen's Congress, Oklahoma City, Oklahoma

Welcome to the Cattlemen's Congress!

The American Maine-Anjou Association (AMAA) and our membership appreciate your interest in the **2023 Bright Lights Maine-Anjou Sale**, and we are thrilled that you made your way to the Cattlemen's Congress! Our breeders have produced a great sale offering packed with outstanding Maine-Anjou genetics. Once again, these consignors have worked hard to bring you an elite group of bulls, bred and open heifers and genetic lots.

With the current cattle markets and the need for efficiency and the ability to maximize profit, we continue to see rapidly growing interest for Maine-Anjou cattle. This demand has been evident by the strength in the sales. Our breeders have committed to bringing their best, and that is apparent with the 2022 Cattlemen's Congress Supreme Female being sold through last year's sale. The cattle industry is constantly attempting to maximize efficiency in the production of a pound of beef, and the **Power Xross** can deliver! Maine-Anjou cattle are docile, calving friendly, black hided and modern designed without sacrifice. Our cattle can improve your bottom line by injecting feed efficiency, carcass yields, quality and eye appeal.

These cattle are backed by EPDs produced from our genetic evaluation performed by Angus Genetics, Inc. (AGI). Please let myself or any of the staff know if we can assist you. The AMAA is here to serve you and provide support for your operation. We are here to help!

*****Note that we have consignors from throughout the country who can assist with the trucking of your purchases to all regions of the U.S.*****

MAINE-ANJOU – POWER WITHOUT SACRIFICE!

Best Regards,
M. Blake Nelson
AMAA Executive Vice-President

67 MAINE-ANJOU / MAINE ANGUS / MAINETAINER LOTS

**Bulls • Embryos
Bred & Open Heifers**

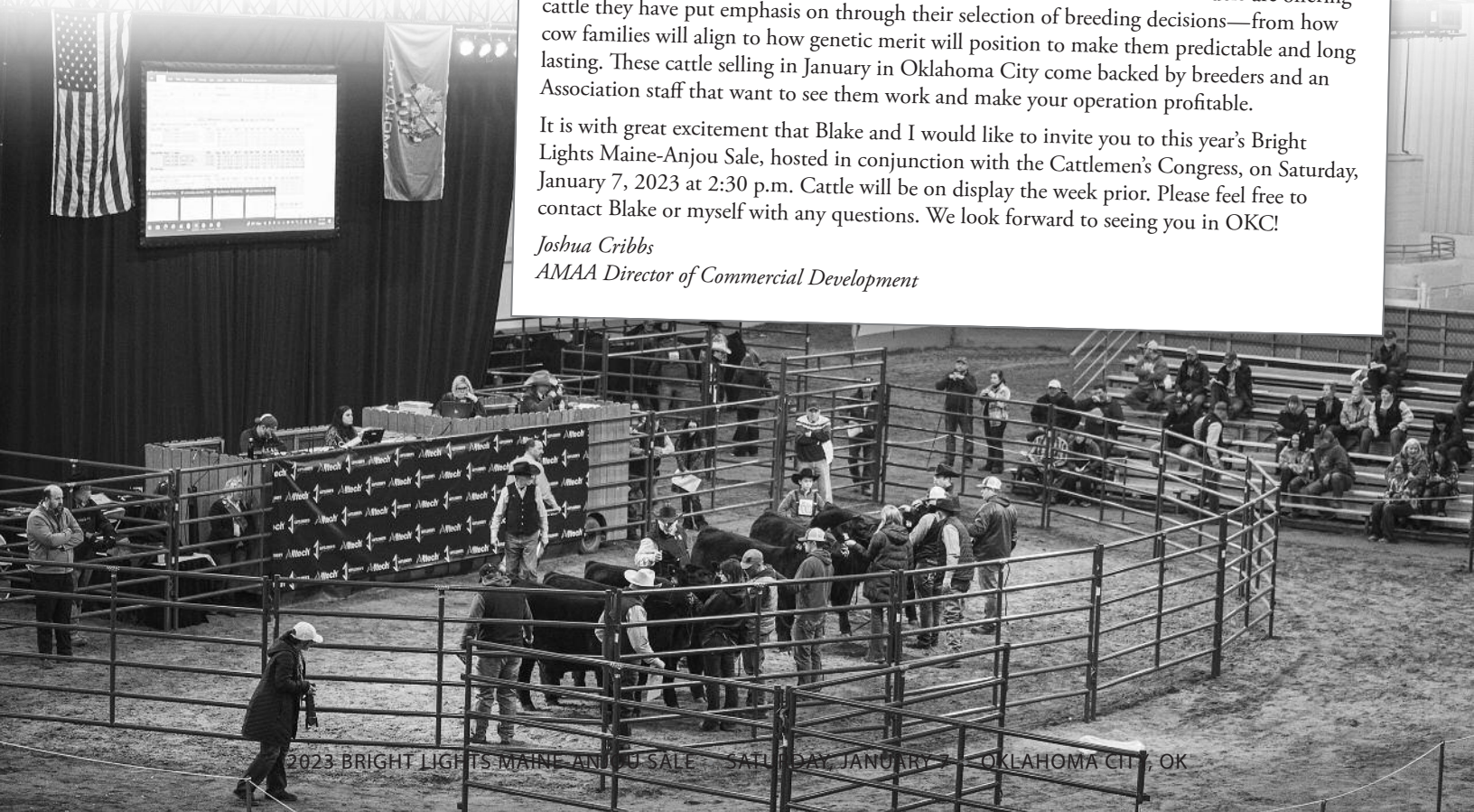
Welcome to Cattlemen's Congress and the **2023 Bright Lights Maine-Anjou Sale**! It has been an honor to represent the cattle and consignors to this sale, alongside Blake, over the past few years. I know we are both looking forward to the offering come January. The set of cattle that you'll find within these pages represents the progressiveness of Maine-Anjou breeders and their programs' commitment to bringing strong, stout and predictable Maine-Anjou genetics to you and your operation.

You will find a profitable mix of power and feed ability in these cattle, as well as a look in the cattle that make them sought after. Maine-Anjou genetics have been put to the test in the feed yard and have generated feed efficiency and carcass merit found only in profitable cattle—Feed-to-Gain of 5.3 to 1 and Rib Eye Areas of 14.6 inches, with no Yield Grade 4 or 5 discounts. The genetics in this offering can make similar strides. Quality and look to generate seedstock that can push the next generation forward come standard in this set.

As you flip through the catalog, you can take stock in the fact that these breeders are offering cattle they have put emphasis on through their selection of breeding decisions—from how cow families will align to how genetic merit will position to make them predictable and long lasting. These cattle selling in January in Oklahoma City come backed by breeders and an Association staff that want to see them work and make your operation profitable.

It is with great excitement that Blake and I would like to invite you to this year's Bright Lights Maine-Anjou Sale, hosted in conjunction with the Cattlemen's Congress, on Saturday, January 7, 2023 at 2:30 p.m. Cattle will be on display the week prior. Please feel free to contact Blake or myself with any questions. We look forward to seeing you in OKC!

Joshua Cribbs
AMAA Director of Commercial Development





Schedule



*Held at the Oklahoma State Fairgrounds,
3001 General Pershing Blvd., Oklahoma City, OK 73107*

TUESDAY, JANUARY 3 – Cattle Arrival Begins, 8 a.m.

WEDNESDAY, JANUARY 4 – Sale Cattle Check In, 9:00–11:00 a.m. *Performance Arena Check-in area*

THURSDAY, JANUARY 5 – Sale Preview & Evaluation, 2:00 p.m. *Performance Arena*

SATURDAY, JANUARY 7 – Maine-Anjou Pen-of-Three Show, 8:00 a.m. *Performance Arena, Ring 1*

Bright Lights Maine-Anjou Bull & Female Sale, 2:30 p.m. Super Barn Sale Arena

NEW SITE & TIME: Maine Exchange, 5:30 p.m., Cattlemen's Congress Barn Bar

AMAA ASSOCIATION REPRESENTATIVES

DJ FOLKERTS *President* (507) 215-1909

BLAKE NELSON *Executive Vice President* (918) 441-3433

JOSHUA CRIBBS *Director of Commercial Development & Promotion*
(813) 967-6949

LINDSEY BROEK *Director of Youth & Communications / The Voice Editor*
(605) 351-6669

RYLEE BARBER *DNA Coordinator & Member Services / Show & Events Assistant*
(806) 676-0098

AUCTIONEER

STEVE BONHAM *Newcastle, OK* (405) 823-2972

SALE STAFF

KENT JAECKE *Sale Emcee* (405) 408-2440

RYAN DENTON *Special Assignment* (918) 629-3004

DELVIN HELDERMON *Special Assignment* (405) 205-1116

CHISOLM KINDER *Oklahoma Cowman* (405) 747-4683

COLTON PRATZ *Oklahoma Cowman* (405) 385-1054; office (405) 235-4391

CRAIG TALKINGTON *Special Assignment* (785) 623-1789

LIVESTOCK MORTALITY INSURANCE

JAMES BESSLER (815) 762-2641

JAME SECONDINO KRIEGER *American Live Stock Insurance*
(812) 208-0956

AMAA 2022–23 BOARD OF DIRECTORS

Executive Committee

DJ FOLKERTS *President*

BRIAN FOX *Vice President*

WYATT DEJONG *Secretary/Treasurer*

BEAU EBERSOLE *Director At-Large*

Region 1

TRAE SIMMONS *Carthage, IN* (765) 438-2312

ANDY JONES *Chapin, IL* (815) 228-7820

BRENT TOLLE *Taylorsville, KY* (502) 905-7831

ERIC WALKER *Prairie Grove, AR* (479) 601-3567

Region 2

MARTY VAN VLIET *Otley, IA* (641) 780-0631

CALI O'HARA *Fort Benton, MT* (406) 734-5252

Region 3

DANNY DUPREE *Clinton, OK* (580) 445-7595

BRETT CARTER *Stratford, OK* (580) 759-9694

ETHAN MOORE *Madill, OK* (580) 795-6707

At-Large

MARK BEAUPREZ *Byers, CO* (303) 822-9260

KENDALL BREMER *Blakesburg, IA* (641) 799-4911



Sale sponsored by:
American Maine-Anjou Association
204 Marshall Rd., Platte City, MO 64079
(816) 431-9950 • Fax (816) 431-9951
maine-anjou.org



Bid Live Online

"Gavel's Down, The Best!"

(516) 366-0734 CCI.live schedule@cci.live

*Online bidding available
to registered bidders @ **cci.live***

*You do not have to be registered
to watch the sale online.*

2023 BRIGHT LIGHTS SALE CONSIGNORS

OWNER	CITY/STATE	PHONE	LOT/S
BLACK CREST CATTLE, CORWINE FAMILY	QUENEMO, KS	(785) 893-4528	37
BLIND BADGER RANCH	FORT MORGAN, CO	(970) 313-7224	22, 23, 24, 25
BOCKMAN CATTLE / COURTNEY BOCKMAN	WEeping WATER, NE	(402) 637-4471	33
BREMER SHOW CATTLE	BLAKESBURG, IA	(641) 799-4911	A
BUCK CATTLE COMPANY & MORTON CATTLE COMPANY	STRATFORD, OK	(580) 759-9694	26, 27, 28
RACHAEL ANN CARLSON	PLATTSBURG, MO	(816) 560-3533	1
C4 BARKER SHOW CATTLE	KEARNEY, MO	(816) 714-4610	40
CITY VIEW FARMS / TLACH FAMILY	PROLE, IA	(515) 681-6108	17, 34, 47
COMPTON CATTLE	STANWOOD, IA	(319) 480-3524	58
KENNEDY CORE / CORE FARMS	PLEASANTVILLE, IA	(641) 891-9084	12, 15
SL & JENNA CRAFT	ANADARKO, OK	(405) 831-1632	18, 38
DANKER FARMS	AVOCA, IA	(712) 307-0799	3, 4, 5
NATALIE DEARWESTER	CAMP POINT, IL	(217) 440-2191	16, 45, 60, 62
DEE VEE M'S FARMS	ZUMBROTA, MN	(320) 282-7237	11, 14
DEJONG RANCH	KENNEBEC, SD	(605) 842-5683	7, 8, 46
DUNK CATTLE CO. / C4 BARKER SHOW CATTLE	WAYNE, NE	(309) 221-1247	35
EBERSOLE CATTLE COMPANY	KELLERTON, IA	(515) 971-8461	54, 55, 56, 57
570 GENETICS: Matt Gunderson & Frank Kralicek, Jr.	YANKTON, SD	(605) 695-3213 / (605) 660-0846	B, C, D
HOLT CATTLE COMPANY	MINA, SD	(605) 380-1209	61
BRETT JONES	ARDMORE, OK	(580) 222-1008	39
KIRKPATRICK CATTLE	POOLVILLE, TX	(817) 597-8864	64
LANDGRAF CATTLE COMPANY	MADILL, OK	(580) 595-0666	2, 32
PARKER LOCKHART	FORT GIBSON, OK	(479) 462-1323	59
TYLER LOUDON	CRESTON, IA	(641) 344-6347	19, 20, 21
MENTE CATTLE COMPANY	ADRIAN, MN	(201) 259-4729	36
CANDACE MUIR	WAYNESFIELD, OH	(419) 604-9832	6
WAYNE & BARB OHLRICHS	NORFOLK, NE	(402) 649-5804	29, 30, 31
PAR 5 CATTLE COMPANY	LAKE CITY, SD	(605) 470-0010	41, 42, 43, 44
SARA RIMPEL	ATHENS, TX	(903) 286-4633	9, 13, 49
ROCKIN H FARMS	RINGWOOD, OK	(580) 554-6444	10
R. THOMAS STEWART	FRANKLIN, IN	(317) 409-6561	65
TRAE SIMMONS	CARTHAGE, IN	(765) 438-2312	50, 51, 52, 53
WILLOW SPRINGS CATTLE COMPANY	PRAIRIE GROVE, AR	(479) 601-3567	48, 63



We have consignors from the starred states who can assist with the trucking of your purchases.



Sale feature semen interest



\$67,000 heifer sired by New Decade



KBSC NEW DECADE 68G ET

DOB 3/28/19 • AMAA 507348 • TATTOO LE KBSC68G

1/2 Maine • Black • Polled

COLBURN PRIMO 5153
CRL PRIMETIME
K&A DAIQUIRI 176Y

K&A SPICE 74S
KBSC CHK 035X
KBSC CHK 553R

DAMERON FIRST CLASS
SILVEIRAS SARAS DREAM 1339
GEF OPEN BAR
K&A HILAREE 519R
FGJ HABANERO 1CM
K&A CARLY F602
BGCC BULLWINKLE

ACT. BW
89

ACT. WW
500

CED	BW	WW	YW	MILK	TM	CEM	CW	REA	MB	FT
6	1.4	45	60	17	40	0				

- Selling 1/3 semen interest.



\$15,000 heifer sired by New Decade



\$42,000 heifer sired by New Decade

- Bremer Show Cattle, Blakesburg, IA
- History has proven many times that many of the greatest maternal sires have not always derived from the traditional method of early promotion and semen sales, yet from the first matings of progressive cattlemen with vision and a belief. New Decade, with a small sample of around 30 calves derived from two programs in 2022, has quickly created a tremendous amount of interest from some of the top programs in the business. Early summer tours led to the first of many high sellers this fall sired by New Decade, with the partnership of Lucky Strike, Griswold, Blind Badger, and Bremer on a young sire they call "Promise Keeper," valued at \$60,000. The pace continued with the offering of New Decade-sired heifer calves, highlighted by the high seller in Jirl Buck's fall sale, raised by John Peterson and selling to Lucky Strike and the Longacre family for \$67,000, who is already off to a winning start. The list continues with a \$42,000 heifer selected by Abree Belcher and the Hindman Family, another heifer sold by Jirl Buck at \$15,000, and a steer for John Peterson at \$8,000 that later traded for well over \$20,000.
- As the word quickly spread, New Decade's popularity really took off with visitors to 605 Sires once they saw him in person. Combining incredible phenotype with a fresh spin to his pedigree from the mainstream genetics of the Maine-Anjou breed, New Decade has positioned himself as a must-use sire.
- In a very rare offering, we are giving you the opportunity to purchase 1/3 semen interest in this proven herd sire that is ready to take over the Maine-Anjou market. Additionally, the first 10 units of sexed female semen will be offered in the 2023 Maine Exchange Sale. For more information on the terms of the 1/3 semen interest being offered, contact the AMAA office, Blake Nelson, Blaine Rodgers, or Kendall Bremer.

MAINE - ANJOU

BRIGHT LIGHTS

Sale

THE BULL DIVISION

PUREBRED / HIGH MAINE BULLS

Lots 1-31



1
bull

RRRC PRINTS MONEY 817H

DOB 9/2/20 • AMAA 519967 • TATTOO RE RRRC / LE 817H

3/4 Maine • Black • Polled

RBT SPORT ILLUSTRATED 33
RRRC SPORTY MONEY 402B
BSMA HEATHER 402P

DDA IGNITION 1417
RRRC ARETHA 817F ET
DCC PLAYMATE 76R

RRRC SPORT 701T
DCC 804J
MAJORS MONEY MAN 673J
BSMA MS WALDO 09K

S A V BRILLIANCE 8077
DAMERON NORTHERN MISS 0109
DCC NEW ERA 218L
NAGE ARETHA 19D

ACT. BW

77

ACT. WW

670

CED	BW	WW	YW	MILK	TM	CEM	CW	REA	MB	FT
8	-1.1	64	93	19	51	5	19	.28	.14	-.02

- Rachael Ann Carlson, Plattsburg, MO
- Selling full interest, including all semen rights and possession.
- Phenotype coupled with superior performance best describes this beast. There is no I80 or Irish Whiskey influence in his pedigree. Super maternal lines on both the Maine and Angus sides. The Angus originates from SAV and a Dameron donor that won Denver and the National Junior Angus Show (full sib to First Class). The Maine side stems twice from 76R (former Show Heifer of the Year). Every cow in our program has 76R at least once in her pedigree. Low birth weight EPD of -1.1 and actual BW of 77 lbs. make him an excellent option to use on heifers. His birth to yearling EPD spread is one of the largest in the breed, with his growth EPDs ranking in the top 3%. His sire was the best high percentage bull we've used in our operation. Consistently low birth weight (-2.5 EPD), excellent growth and picture-perfect females. For more information go to our website: carlsonmaineanjou.com, or give us a call.



2
bull

LADD JUMP FIRST 120J

DOB 12/5/21 • AMAA 536072 • TATTOO RE LADD / LE 120J

PB Maine • Black w/ White Marks • Horned

BOE EPIC
LADD MR. GADGET 9026G
CMCC DREAM GIRL 602 ET

LADD MR. GADGET 9026G
LADD FELT IT COMIN'
CMCC ZERICA 2034

BOE GARTH
MISS BOE 502R
I DELIVER
BK3R WHOS PLAYING 9010

BOE EPIC
CMCC DREAM GIRL 602 ET
BK XIKES X59

ACT. BW

74

ACT. WW

650

CED	BW	WW	YW	MILK	TM	CEM	CW	REA	MB	FT
3	2.1	43	60	24	45	-6				

- Landgraf Cattle Co., Madill, OK
- Jump First is real world good. Great muscle, ultra-dimensional, way stout and can still float around the pen. Mr. Gadget is a BOE Epic son we raised out of an I Deliver cow that Ladd showed; we have used him heavily and are impressed to say the least.

3
bull

KGDA THUNDER ROLLS 241K ET

DOB 1/4/22 • AMAA 531703 • TATTOO LE KGDA241K

PB Maine • Black • Scurred

BOE GARTH
MINN HARD WHISKEY 591Y
BOE MISS JOLENE

DCC HARD DRIVE 138R
JSC KATIE 5S
GVC SUH 01W
BOE KELSEY

JOJO
KBSC SIMPLIFY 22C

BSC SIMPLICITY 44U
AGH IRISH CREAM

ACT. BW
89

KGDA 80S MERCEDES

GOET 180
DSUL APHRODITE 96W

ACT. WW
767

CED	BW	WW	YW	MILK	TM	CEM	CW	REA	MB	FT
-1	2.5	50	64	17	43	-11	21	.33	.08	-.04

- Danker Farms, Avoca, IA
- The lone Garth offering out of our 2019 Junior National Champion Bred-and-Owned Female, Jojo. This one brings on all the power and structural width while still being able to get out and motor on big, square feet and legs. Pounds, power, and front pasture profile.



4
bull

KGDA KNOCKOUT 207K ET

DOB 1/14/22 • AMAA 536026 • TATTOO LE KGDA207K

3/4 Maine • Black • Scurred

BK XIKES X59
BK UNLIMITED POWER 472
GCC MISS WHISKEY 57R

DMCC LIMITED EDITION 4F
PANNELL MISS 4072
IRISH WHISKEY
MISS CHILL 7706

JOJO
KBSC SIMPLIFY 22C

BSC SIMPLICITY 44U
AGH IRISH CREAM

ACT. BW
84

KGDA 80S MERCEDES

GOET 180
DSUL APHRODITE 96W

ACT. WW
718

CED	BW	WW	YW	MILK	TM	CEM	CW	REA	MB	FT
9	-0.1	39	54	20	40	0	11	.24	.17	-.02

- Danker Farms, Avoca, IA
- Love the added volume and density this Xikes son brings to the table. His full sisters have been well received the last couple of years, and he continues to showcase the power of this mating. The cowman's kind. Full brother to Lot 5.



5
bull

KGDA KELCE 208K ET

DOB 1/15/22 • AMAA 536025 • TATTOO LE KGDA208K

3/4 Maine • Black • Polled

BK XIKES X59
BK UNLIMITED POWER 472
GCC MISS WHISKEY 57R

DMCC LIMITED EDITION 4F
PANNELL MISS 4072
IRISH WHISKEY
MISS CHILL 7706

JOJO
KBSC SIMPLIFY 22C

BSC SIMPLICITY 44U
AGH IRISH CREAM

ACT. BW
82

KGDA 80S MERCEDES

GOET 180
DSUL APHRODITE 96W

ACT. WW
696

CED	BW	WW	YW	MILK	TM	CEM	CW	REA	MB	FT
9	-0.1	39	54	20	40	0	11	.24	.17	-.02

- Danker Farms, Avoca, IA
- 208K is the extended, higher profiling of these two 3/4 blood bulls we are offering. Same fundamental feet and leg correctness and extremely true in his angles. This is one we think would be a great complement to a lot of the females in the Maine breed today. Full brother to Lot 4.





6
bull

BBBN X2 201X
BNWZ DATA BANK 1311C ET
BNWZ CALYPSO 28Y

LFCC 80EX
KKF RAENAH
TJSC LUCKY LADY 5Z

MCCF KOOL-AID

DOB 2/3/22 • AMAA 530861 • TATTOO BE MCFF10K

3/4 Maine • Black • Polled

GVC STATESMAN 4R ET
BOSS BEAUTY 84M
SLC SOONER 101M
DLB MISS WHISKEY 2T

GOET 180
LFCC 80 EXT
SLC SOONER 101M
JSC LUCKY LADY 106W

ACT. BW
79
ACT. WW
550

CED	BW	WW	YW	MILK	TM	CEM	CW	REA	MB	FT
10	-0.5	43	62	25	46	-1				

- Candace Muir, Waynesfield, OH
- His name says it all! This guy is the complete package. He has the cool look, sound structure, stoutness, good front, low birth weight, good testicular development, and a great pedigree to back him up. He was Champion Maine-Anjou Bull at the Junior National as a calf. His dam has proven herself year after year, producing champions. His granddam, TJSC Lucky Lady 5Z, was actually purchased from this very sale when it was held in Denver and is one of our lead donor cows here at MCC. We have been in love with this guy from day one and are excited for his future making the lucky someone lots of money!



7
bull

BBBN X2 201X
BNWZ DATA BANK 1311C ET
BNWZ CALYPSO 28Y

PVF INSIGHT 0129
DE H10 ET
DJ ELLIE E711

DJ KNOCKOUT K221

DOB 2/7/22 • AMAA 534087 • TATTOO LE DJBK221

3/4 Maine • Black • Polled

GVC STATESMAN 4R ET
BOSS BEAUTY 84M
SLC SOONER 101M
DLB MISS WHISKEY 2T

S A V BRILLIANCE 8077
PVF MISSIE 790
BOE GARTH
DE Z90

ACT. BW
82
ACT. WW
592

CED	BW	WW	YW	MILK	TM	CEM	CW	REA	MB	FT
8	0.3	53	78	23	49	-1	25	.48	.05	-.04

- Dejong Ranch, Kennebec, SD
- From day one, Knockout has had style and correctness. If you want structural excellence and style with hair, this 3/4 Maine bull is a neat option.



8
bull

BBBN X2 201X
BNWZ DATA BANK 1311C ET
BNWZ CALYPSO 28Y

DJ FEELIN' GOOD F810
DE H50
DJB A50

DJ KODAK K222

DOB 2/11/22 • AMAA 534088 • TATTOO LE DJBK222

3/4 Maine • Black • Polled

GVC STATESMAN 4R ET
BOSS BEAUTY 84M
SLC SOONER 101M
DLB MISS WHISKEY 2T

GOET 180
DJB DE D61

ACT. BW
71
ACT. WW
586

CED	BW	WW	YW	MILK	TM	CEM	CW	REA	MB	FT
11	-1.3	54	74	22	49	-4	13	.28	.11	-.04

- Dejong Ranch, Kennebec, SD
- This calving ease bull should be a great option if you like extension and freaky fronts. His young mother has a picturesque udder and comes from multiple generations of show ring style.

9
bull

RIM EPICENTER 826 ET

DOB 2/17/22 • AMAA 533239 • TATTOO RE RIM / LE 432K

PB Maine • Black • Scurred

BOE GARTH
BOE EPIC
MISS BOE 502R

MINN HARD WHISKEY 591Y
BOE MISS JOLENE
FJH ALL AMERICAN 501L

GOET I80
JMG MISS SCARLETT 826F
HEL NICE BLEND 8W

COWAN'S ALI 4M
BPF MILEY 80T
CC PREMIUM BLEND 47S
NAGE MS ICON 308P

ACT. BW
82
ACT. WW
NA

CED	BW	WW	YW	MILK	TM	CEM	CW	REA	MB	FT
2	0.8	41	58	25	45	-5				

- Sara Rimpel, Athens, TX
- Selling full possession and 1/2 semen interest. Seller retains 1/2 semen interest.
- This bull has a lot of quality. His robust, three-dimensional design combines with a refined build through his head and neck coming out of the top of his blade and smoothly transitioning into a clean front end and shoulder. Bold and dimensional through the center portion of his body with plenty of depth that progresses well into his rear rib and flank, he has a long, stout hip design with a remarkable rear leg that attributes to his soundness and overall presence. With all his outstanding physical qualities, he also has the genetic backing to put him over the top, being sired by the great BOE Epic and out of the cornerstone donor dam of Rimpel Show Cattle, JMG Miss Scarlett 826F. We can't wait for this bull to put his stamp on the Maine-Anjou breed!



10
bull

GLH BOMBA 27K ET

DOB 2/20/22 • AMAA 535562 • TATTOO RE GLH / LE 23J

PB Maine • Black w/ White Marks • Polled

BBBN X2 201X
BNWZ DATA BANK 1311C ET
BNWZ CALYPSO 28Y

GVC STATESMAN 4R ET
BOSS BEAUTY 84M
SLC SOONER 101M
DLB MISS WHISKEY 2T

ACT. BW
84
ACT. WW
705

BFW AMERICAN JAZZ 747P
BFW AJ IVY Q590T
BFW DP IVY Q321N

DVMM JAZZ
GCC AMERICAN GIRL 1747
LFC 9814L
VCL LEXUS 911J

CED	BW	WW	YW	MILK	TM	CEM	CW	REA	MB	FT
8	0.8	40	55	19	40	-2				

- Rockin H Farms, Ringwood, OK
- This sock footed son of Data Bank has all the right pieces to make an excellent herd sire. Starting at the ground with a big foot and working up to a wide top with plenty in between. Ivy, his dam, has produced many top selling calves for us, both male and female and no matter the sire, but we think this Data Bank mating clicked pretty well! Stop by the stalls and check him out.



11
bull

DVMS KING 203K

DOB 3/4/22 • AMAA 533562 • TATTOO RE DVMS / LE 203K

PB Maine • Black • Horned

COWAN'S ALI 4M
GOET I80
BPF MILEY 80T

NBH POLLED ENERGIZER 688E
FJH COUNTESS 115H
DCC HARD DRIVE 138R
DCC MERCEDES 701P

ACT. BW
80
ACT. WW
528

BK UNLIMITED POWER 472
DVMS MISS HEAVEN SENT 008H
BSC CHARLOTTE 2C

DMCC LIMITED EDITION 4F
PANNELL MISS 4072
MONOPOLY
K&A TEMPEST 762T

CED	BW	WW	YW	MILK	TM	CEM	CW	REA	MB	FT
6	2.7	41	56	24	44	-2	9	.24	.06	-.03

- Dee Vee M's Farms, Zumbrota, MN
- Selling 2/3 interest and full possession. Seller retains 1/3 semen interest.
- Looking to add some power and thickness to your next calf crop? King is an absolute meat wagon with added soundness and a cocky style. A natural calf out of our newest addition to the donor pen, a first-calf heifer tracing back to our Charlotte donor from the Braun program in northern Iowa. This guy is sure to be an asset in making steers that flat grow and stylish females that will demand a premium as replacements. Being a purebred, he has the ability to work in many different situations.




12
bull
TJSC END GAME 61G ET
 BK XIKES X59

TJSC MISS HARMONY 58CBOLAN

MISS HIDDEN GEM 899F ET
 BOE EPIC
 HARTGERS SHES SO STYLIN

CMAC HIDDEN GEM GAME OVER ET

DOB 3/4/22 • AMAA 535667 • TATTOO LE CMAC61K

3/4 Maine • Black • Polled

 BK UNLIMITED POWER 472
 GCC MISS WHISKEY 57R
 GOET 180
 MISS HARMONY 533R

 BOE GARTH
 MISS BOE 502R
 GOET 180
 GCC JASMINE 493U

 ACT. BW
 85
 ACT. WW
 610

CED	BW	WW	YW	MILK	TM	CEM	CW	REA	MB	FT
4	2.2	39	58	27	46	-2				

• Kennedy Core / Core Farms, Pleasantville, IA

• Lot 12 is so unique with his strong characteristics in a sound and complete package. Miss Hidden Gem 899F was campaigned by Sara Sullivan and then purchased by us and Ty Webster. Her 2021 natural calf, One For All, was purchased at OKC last year by Blaine Rodgers for his powerful promotional sire battery. This fall, two End Game full sisters to Lots 12 and 15 sold for \$19K and \$51K. In today's highly competitive market, genetic consistency and exceptional cow families are where the game is won or lost. Long sided, perfect bone shape, perfect size and the look that has versatility written all over it. We love the huge foot and soft structure this bull has. I can't ever get Deb to sell many embryos on our donors because she would rather raise them and sell them, so here is your opportunity to buy into a cow family that is going to be a game changer for anyone who purchases these genetics. Full brother sells as Lot 15.


13
bull
DADDY'S MONEY 55Z
 GOET 180
 JSC VELVET 112W

JMG MISS SCARLETT 826F
 GOET 180
 HEL NICE BLEND 8W

RIM EASY MONEY 826 ET

DOB 3/5/22 • AMAA 533240 • TATTOO RE RIM / LE 847K

PB Maine • Black • Polled

 COWAN'S ALI 4M
 BPF MILEY 80T
 HAA WISDOM 505S
 SF NURSES AIDE 378

 COWAN'S ALI 4M
 BPF MILEY 80T
 DCC PREMIUM BLEND 47S
 NAGE MS ICON 308P

 ACT. BW
 72
 ACT. WW
 NA

CED	BW	WW	YW	MILK	TM	CEM	CW	REA	MB	FT
12	-2.4	41	47	14	34	2				

• Sara Rimpel, Athens, TX
• Selling 2/3 interest and full possession. Seller retains 1/3 semen interest.

• From the late, great Daddy's Money and the cornerstone donor dam of Rimpel Show Cattle, 826F, this bull presents us with a refined build through his front 1/3. Clean fronted and smooth shouldered, transitioning into a neck that comes from the top of his blade. Smooth and robust from the profile with plenty of dimension through the center portion of his body with a bold sprung rib and plenty of depth progression through his rib. Stout hip design with plenty of length that transitions into a phenomenal rear leg design that can be appreciated on the move as well as from the profile. With these great physical characteristics, he also has calving ease in his pedigree. Make him your next heifer bull and enjoy the success this bull is sure to bring you during calving season.


14
bull
BOE GARTH
 MINN HARD WHISKEY 591Y
 BOE MISS JOLENE

SPCC PARK LADY 47E ET
 WLE UNO MAS X549
 BPF EVA 954X

DVMS KONG 204K

DOB 3/8/22 • AMAA 532986 • TATTOO RE DVMS / LE 204K

3/4 Maine • Black • Polled

 DCC HARD DRIVE 138R
 JSC KATIE 5S
 GVC SUH 01W
 BOE KELSEY

 CNS DREAM ON L186
 SHAWNEE MISS 770P
 SLC SOONER 101M
 DCC EVA 33S

 ACT. BW
 86
 ACT. WW
 598

CED	BW	WW	YW	MILK	TM	CEM	CW	REA	MB	FT
5	0.9	50	64	19	44	-6	22	.34	.11	-.04

• Dee Vee M's Farms, Zumbrota, MN
• Selling 2/3 interest and full possession. Seller retains 1/3 semen interest.

• If you are looking for a well rounded bull with added extension, a massive foot, and style to burn, Kong is the one for you. A true spread bull that combines moderate calving ease and excellent growth with an awesome phenotype to boot. A natural calf out of our "Excite" donor that never misses, and her mating to Garth is churning out great cattle. Bid with confidence on this guy. He is sure to be at the top of your list sale day.

15
bull

CMAC HIDDEN GEM GAME TIME ET

DOB 3/10/22 • AMAA 535666 • TATTOO LE CMAC62K

3/4 Maine • Black • Polled

BK XIKES X59
TJSC END GAME 61G ET
TJSC MISS HARMONY 58C

BOE EPIC
MISS HIDDEN GEM 899F ET
HARTIGERS SHES SO STYLIN

BK UNLIMITED POWER 472
GCC MISS WHISKEY 57R
GOET 180
BOLAN MISS HARMONY 533R
BOE GARTH
MISS BOE 502R
GOET 180
GCC JASMINE 493U

ACT. BW
82
ACT. WW
595

CED	BW	WW	YW	MILK	TM	CEM	CW	REA	MB	FT
4	1.8	39	58	27	46	-2				

- Kennedy Core / Core Farms, Pleasantville, IA
- Selling 2/3 interest and full possession. Seller retains 1/3 semen interest.
- Lots 15 and Lot 12 are full brothers out of the 2020 Show Heifer of the Year, campaigned by Sara Sullivan and then purchased by us and Ty Webster. In her young career, she has had five calves. Her 2021 natural calf was purchased at OKC last year by Blaine Rodgers. This fall, two End Game full sisters to these bulls sold for \$19K and \$51K. In today's highly competitive market, genetic consistency and exceptional cow families are near priceless. We have had the opportunity to create several Maine promotional bulls over the years, but none more exciting than Lot 15. Good looking, big muscled, good shouldered, athletic, and great haired, he has been intriguing since day one. We truly believe this is the genetic and phenotypic package that cattlemen from a variety of perspectives look for.



16
bull

MR. BUDDY ET

DOB 4/6/22 • AMAA 534303 • TATTOO RE NDEK02

3/4 Maine • Black • Polled

COWAN'S ALI 4M
GOET 180
BPF MILEY 80T

SLC SOONER 101M
MOORE SHELBY 283Y
WLE CNS SHELBY T335

NBH POLLED ENERGIZER 688E
FJH COUNTESS 115H
DCC HARD DRIVE 138R
DCC MERCEDES 701P
DMCC LIMITED EDITION 4F
PANNELL MISS 015
CNS DREAM ON L186
BLL ZEIS MISS BREAK R335

ACT. BW
70
ACT. WW
550

CED	BW	WW	YW	MILK	TM	CEM	CW	REA	MB	FT
15	-0.3	44	57	22	44	0	10	.28	.01	-.04

- Natalie Dearwester, Camp Point, IL
- Full sib to the high Maine heifer that sold in the Hudson Pines sale in 2016. This bull won his class in Louisville and could very well be a game changer in the Maine-Anjou breed. Don't overlook this one!



GOET 180 Sire of Lot 16

17
bull

TLAC MAVERICK 1510K

DOB 4/16/22 • AMAA 534536 • TATTOO RE TLAC / LE 1510K

3/4 Maine • Black • Polled

BOE GARTH
BOE DONE DEAL
BOE 425BK

GCC GOOSE 3110
GOOSE
MS DEDE

MINN HARD WHISKEY 591Y
BOE MISS JOLENE
NAGE ANTE UP 70Z
BOE 913W
GCC MAVERICK 9066P
GCC MISS DICE 93066
HBSC MR ACE 3W
MS BENCHMARK

ACT. BW
60
ACT. WW
580

CED	BW	WW	YW	MILK	TM	CEM	CW	REA	MB	FT
0.9	59	83	11	41						

- City View Farms, Tlach Family, Prole, IA
- Maverick is as rugged built as any high percentage Maine-Anjou bull you will find. Beyond his huge feet and legs, he has the right body length and softness of flank to give him the breeding diversity to not only be used to sire more Maine-Anjou and Maine Angus progeny but also to capitalize on his Maine percentages to create next level Maine cattle. His dam is an up-and-coming donor cow within our program that we call "Linda." She was successfully campaigned by Jenna and was Third Overall at Aksarben a few years back.





18
bull

JABR KEYSTONE 247K

DOB 5/1/22 • AMAA 536118 • TATTOO LE JABR247K

3/4 Maine • Black • Polled

MINN LIVE ACTION 203Y
SWEET WILLIE 890F ET
BSC HEY THERE DELILAH95Y

DADDYS MONEY 55Z
MCKY KATE 9813 ET
CALBERTA COW 8215

PREDATOR 19U
JSC KATIE 5S
BSC SIMPLICITY 44U
KBSC VERONICA 838U
GOET 180
JSC VELVET 112W
CALBERTA MAX 321P
CALBERTA COW 648R

ACT. BW
65
ACT. WW
600

CED	BW	WW	YW	MILK	TM	CEM	CW	REA	MB	FT
8	0.3	34	39	18	35	2				

- **SL and Jenna Craft, Anadarko, OK**
- If you're looking for your next first-calf heifer bull, look no further! Calving ease bulls are essential in any operation. Not only does Keystone have calving ease on the top and bottom sides of his pedigree, but he is a grandson of the popular McKay 8215 cow. This May calf has plenty of natural thickness with a set of feet and legs we all need in our cow herds.

HIGH MAINE PEN BULLS (Lots 19-31)



19
bull

TLLC JED

DOB 10/15/21 • AMAA 528639 • TATTOO RE TLLC / LE 1J11

PB Maine • Black • Polled

BNWZ DATA BANK 1311C ET
CCLT NETWORK 1801F
MLAN CANDI CANE 400

TEGM RED ADVANTAGE 100T
TLLC RUBY 77A
B GOOD VALENTINE 10T

BBBN X2 201X
BNWZ CALYPSO 28Y
BK XIKES X59
BK XALIE 047
HAA CONTENDER 243P
HALL'S ENCHANTRESS 38M
JUST RITE 501M

ACT. BW
71
ACT. WW
729

CED	BW	WW	YW	MILK	TM	CEM	CW	REA	MB	FT
10	2.0	41	59	18	38	2	8	.30	.10	-.04

- **Tyler Loudon, Creston, IA**
- TLLC Jed is one cool looking, impressive dude. His Red Advantage dam won her division at the Junior National a few years ago. This guy is smooth and sound. He should sire high quality show cattle and replacement females that will last in the herd for years. CCLT Network is a bull we found in the pasture at Clantons. Purchased as a two-year-old, he is a Data Bank son out of a Xikes cow. He was a true find, siring very moderate birth weights and great growth. We are keeping as many daughters as we can, as we think their value will shine in production. We lost Network this fall, so there won't be many more of his progeny available for sale.



20
bull

TLLC JUDD

DOB 11/4/21 • AMAA 528643 • TATTOO RE TLLC / LE 1J9

PB Maine • Black • Polled

BNWZ DATA BANK 1311C ET
CCLT NETWORK 1801F
MLAN CANDI CANE 400

BK ADMIRABLE A12
JJN MISS 505C
BK REBA 5065

BBBN X2 201X
BNWZ CALYPSO 28Y
BK XIKES X59
BK XALIE 047
GOET 180
BK TRADITIONAL 7111
TNAT PARKER
DLB MS EXEC 505E

ACT. BW
74
ACT. WW
744

CED	BW	WW	YW	MILK	TM	CEM	CW	REA	MB	FT
10	0.3	40	54	22	43	4	11	.34	.09	-.04

- **Tyler Loudon, Creston, IA**
- Judd moves like a 1400 pound cat, agile and athletic. We bought a group of bred heifers from the late Jerry Gibson, and Judd's mom is one of those cows. This bull is super well made and incredible at the ground. A long bodied bull with a great front end that should make high quality show cattle and great replacements. We found CCLT Network in the pasture at Clantons. We bought him as a two-year-old—a Data Bank out of a Xikes cow. He was a true find, producing very moderate birth weights and great growth. We are keeping as many daughters as we can—their value will shine in production. We lost Network this fall, so there won't be many more available for sale.

21
bull

TLLC JAMMIN

DOB 11/6/21 • AMAA 528645 • TATTOO RE TLLC / LE 1J16

PB Maine • Black • Polled

BNWZ DATA BANK 1311C ET
CCLT NETWORK 1801F
MLAN CANDI CANE 400

BBBN X2 201X
BNWZ CALYPSO 28Y
BK XIKES X59
BK XALIE 047

GVC TEBOW 90U
WCC 901Z
HAA COUNTESS 604U

GVC INCREDABULL 90R
GVC MISS C044 563R
BPJV HOTLINE
FJH COUNTESS 3K

ACT. BW
79
ACT. WW
784

CED	BW	WW	YW	MILK	TM	CEM	CW	REA	MB	FT
8	1.3	45	63	22	44	4	11	.35	.09	-.04

• **Tyler Loudon, Creston, IA**

• Jammin is a beast and an athletic freak. He is long spined, long bodied, very good fronted and impressive in his muscle shape and design. The bottom side of his pedigree is a little old school, going back to some Green Valley genetics. His dam has some age, but that's a good thing because longevity and production are built into this rugged, good looking dude. He is another son of our now-deceased Network bull we found in the pasture at the Clantons, a true find that sired very moderate birth weights and great growth. We are keeping as many daughters as we can, as we think their value will shine in production. There won't be many more Network sons available for sale.



22
bull

BBR KINGSTON 68K ET

DOB 2/7/22 • AMAA 535506 • TATTOO RE BBR / LE 68K

3/4 Maine • Black • Polled

BOE EPIC
DUEL ICON 802F
DUEL WORRY NOT 4303B

BOE GARTH
MISS BOE 502R
HETN NO WORRIES 138Z
DUEL MISS TRENDSETTER 1066

GVC NAVIGATOR X11
GVC SHANIA 80Z
MISS GREEN VALLEY 725T

GVC ON STAR 07U
ATZ MISS
GVC STATESMAN 4R ET
MISS GREEN VALLEY 349N

ACT. BW
87
ACT. WW
700

CED	BW	WW	YW	MILK	TM	CEM	CW	REA	MB	FT
0	2.4	45	67	24	47	-5	28	.45	.20	-.04

• **Blind Badger Ranch, Fort Morgan, CO**

• **Selling 2/3 interest and full possession. Seller retains 1/3 semen interest.**

• What a special individual! We all talk about pieces to breed in cattle, and this sale feature covers most of them. Combining this much presence, power, body shape and athleticism is truly hard to replicate. He is backed by the Shania cow that is producing some of our best. Full sisters just commanded \$80K and \$50K and went to some great programs. In an era when we are searching for wild pieces, this bull brings them all to the table while still covering all the fundamentals and hammering down the scales. BBR Kingston is a true herd bull that can change your program.



23
bull

BBR KNIGHT RIDER 69K ET

DOB 2/7/22 • AMAA 535508 • TATTOO RE BBR / LE 69K

3/4 Maine • Black • Polled

GOET I80
BBR MEMPHIS MAFIA 3E ET
GEF MISS DOMINATRIX 236A

COWAN'S ALI 4M
BPF MILEY 80T
MINN HARD WHISKEY 591Y
BA FOREVER LADY 520

GVC NAVIGATOR X11
GVC SHANIA 80Z
MISS GREEN VALLEY 725T

GVC ON STAR 07U
ATZ MISS
GVC STATESMAN 4R ET
MISS GREEN VALLEY 349N

ACT. BW
89
ACT. WW
680

CED	BW	WW	YW	MILK	TM	CEM	CW	REA	MB	FT
0	2.5	52	73	24	50	-4	26	.45	.17	-.03

• **Blind Badger Ranch, Fort Morgan, CO**

• BBR Memphis Mafia cattle have been in high demand this fall. Here's your chance to take a direct son home, backed by the great Shania cow. BBR Knight Rider is not only cool on paper, he's also stout and rugged built, good looking and awesome in his rib cage. His full sister was the famous Mafia Queen shown by the Gensini family. Another full sister just commanded \$40K this fall. Cow families are important when taking home a new herd sire, and BBR Knight Rider is as solid as the day is long, packing Dominatrix and Shania all in one. Get on board!





24
bull

BBR KANE 54K

DOB 3/2/22 • AMAA 535511 • TATTOO RE BBR / LE 54K

PB Maine • Black • Polled

MINN LIVE ACTION 203Y
WEIS ALL ME 10F
BSC CANDI 42Z

BBR MEMPHIS MAFIA 3E ET
BBR MORGAN 2054H
BBR MORGAN 1523C

PREDATOR 19U
JSC KATIE 5S
BPF MERCEDES BENZ 131U
K&A CELEST 517R
GOET 180
GEF MISS DOMINATRIX 236A
BBBN X 483X
TFSC ANNABELL 613U

ACT. BW
80
ACT. WW
550

CED	BW	WW	YW	MILK	TM	CEM	CW	REA	MB	FT
9	0.7	37	45	21	40	1	7	.21	.09	-.03

- Blind Badger Ranch, Fort Morgan, CO
- We are excited to offer you this son of All Me. Backed by an impressive first-calf heifer who is sired by Mafia and out of an X/Alf dam, there is lots of good in this one's pedigree. All Me cattle have been in high demand due to their presence, balance and most importantly their feet and structure. BBR Kane got all that from All Me and some extra bone and power from his dam. His pure athleticism and skeletal design combined with his pedigree will ensure you a herd sire that will impact your herd for years to come.



25
bull

BBR KNOX 15K

DOB 3/22/22 • AMAA 535509 • TATTOO RE BBR / LE 15K

PB Maine • Black • Polled

BBBN X2 201X
BNWZ DATA BANK 1311C ET
BNWZ CALYPSO 28Y

GOET 180
BBR MORGAN 1712E ET
GEF MISS DOMINATRIX 236A

GVC STATESMAN 4R ET
BOSS BEAUTY 84M
SLC SOONER 101M
DLB MISS WHISKEY 2T
COWAN'S ALI 4M
BPF MILEY 80T
MINN HARD WHISKEY 591Y
BA FOREVER LADY 520

ACT. BW
89
ACT. WW
520

CED	BW	WW	YW	MILK	TM	CEM	CW	REA	MB	FT
10	0.6	41	59	24	45	-3	12	.28	.08	-.04

- Blind Badger Ranch, Fort Morgan, CO
- Selling 2/3 interest and full possession. Seller retains 1/3 semen interest.
- Purebred Maine bulls built like BBR Knox are not easy to find, not easy to make and are not always for sale. But here he is! Check out this pedigree—sired by Data Bank and out of a full sister to Memphis Mafia. BBR Knox will impress you in terms of balance, power, and look, all while setting down on a big, soft foot. When in motion, his arrogance and athleticism demand your attention. As an added bonus, this one is dense bodied and has coal black hair. No matter your goals in the industry, BBR Knox checks a lot of important boxes in a purebred package.

FALL 2022 MAINE-ANJOU BREED AVERAGE EPDs:

	CED	BW	WW	YW	MILK	TM	CEM	CW	REA	MB	FT
Maine-Anjou non-parents:	6	1.3	44	56	19	41	1	12	.29	.10	-.03
MaineTainer non-parents:	8	0.9	44	59	18	40	0	15	.31	.14	-.03

EPDs printed in the sale catalog were current as of 12/7/2022.

26
bull

BKMT KING KONG 22K ET

DOB 3/8/22 • AMAA 535584 • TATTOO RE BKMT / LE 22K

PB Maine • Black • Scurred

BOE GARTH
BOE EPIC
MISS BOE 502R

MINN HARD WHISKEY 591Y
BOE MISS JOLENE
FJH ALL AMERICAN 501L

GOET I80
MTF ALVARO 3022
BK XCEPTIONAL 001

COWAN'S ALI 4M
BPF MILEY 80T
BK UNLIMITED POWER 472
RSCC ROXBURY 707L

ACT. BW
78
ACT. WW
767

CED	BW	WW	YW	MILK	TM	CEM	CW	REA	MB	FT
4	0.1	36	51	30	48	-5	21	.29	.13	-.03

- Buck Cattle Co. and Morton Cattle Co., Stratford, OK
- Seller retains in-herd semen use only.
- Here is your first opportunity to buy a full brother to MTF Goosebumps 901G. To date, we have sold four full sisters to this bull that have averaged over \$60,000! Goosebumps is the oldest of the sisters and hit the donor pen in stride this year, producing a \$26,000 heifer in her first set of ET calves. Stout ended with added look and presence best describes this young herd sire.



27
bull

BKMT KINGSMAN 02K ET

DOB 3/12/22 • AMAA 535583 • TATTOO RE BKMT / LE 02K

3/4 Maine • Black • Scurred

BOE EPIC
BKMT GENUINE 906G ET
CMCC WHATS UP 906

BOE GARTH
MISS BOE 502R
HAA WISDOM 505S
BK RENEGADE 5010

BK XIKES X59
BK BELLY DANCER 4001
LADD XANNE 0008

BK UNLIMITED POWER 472
GCC MISS WHISKEY 57R
BKRI TRENDSETTER 501T
BK 4J ULICIA 8013

ACT. BW
74
ACT. WW
825

CED	BW	WW	YW	MILK	TM	CEM	CW	REA	MB	FT
9	-1	37	53	28	46	3	19	.32	.17	-.03

- Buck Cattle Co. and Morton Cattle Co., Stratford, OK
- If you are searching for a bull that combines maternal ability with show ring quality, this is your bull. It's tough to find a Maine-Anjou bull this soft middled and maternal that still has the show ring presence that is in demand today. As an added bonus, he combines two of our most consistent and potent donors together in one pedigree, BK Belly Dancer 4001 and CMCC What's Up 906.



28
bull

BKMT KING OF HEARTS 14K ET

DOB 3/24/22 • AMAA 535587 • TATTOO RE BKMT / LE 14K

3/4 Maine • Black • Polled

BOE EPIC
BKMT GENUINE 906G ET
CMCC WHATS UP 906

BOE GARTH
MISS BOE 502R
HAA WISDOM 505S
BK RENEGADE 5010

CMCC MAKERS MARK B5010
MTF BKMT DANCE LESSONS ET
BK XCEPTIONAL 001

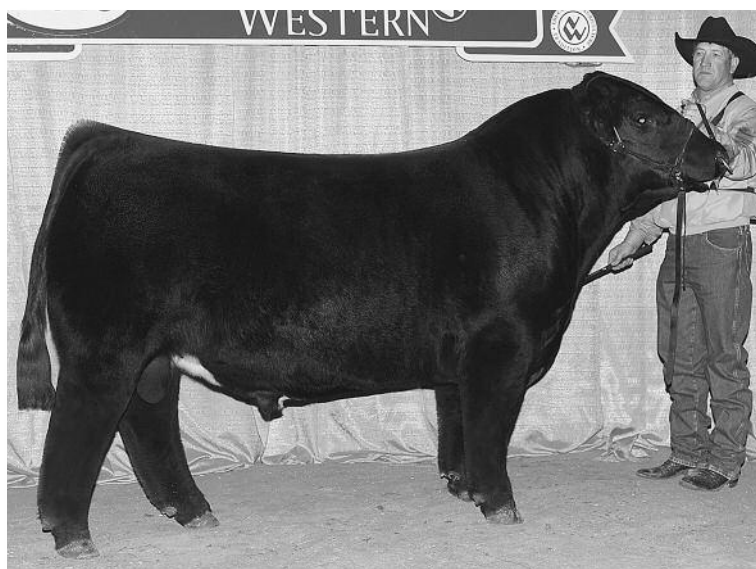
MINN HARD WHISKEY 591Y
BK RENEGADE 5010
BK UNLIMITED POWER 472
RSCC ROXBURY 707L

ACT. BW
90
ACT. WW
715

CED	BW	WW	YW	MILK	TM	CEM	CW	REA	MB	FT
10	1.0	34	47	27	44	3	21	.37	.13	-.04

- Buck Cattle Co. and Morton Cattle Co., Stratford, OK
- Seller retains in-herd semen use only.
- Genuine strikes again and this time does it with one of our newest donors, BKMT Dance Lessons. No stranger to success, Dance Lessons looks to continue her show ring success in the donor pen. With heifer calves the past year averaging over \$18,000, this is the first of the bull calves to sell. You get all the power, bone, and width you can expect from Dance Lessons and the center body dimension and structure you expect from Genuine. As an added bonus, his hair quality is unmatched! We have high expectations for this bull. Maternal brother to BKMT King of Kings.





BOE Garth Sire of Lots 29 and 31



DUEL Icon 802F Sire of Lot 30



**2023
JUNIOR NATIONAL
JUNE 19-24,
GRAND ISLAND,
NEBRASKA**

29
bull

OHL KABANG 4192K

DOB 3/6/22 • AMAA 536264 • TATTOO RE AZ4192K

3/4 Maine • Black • Polled

BOE GARTH

BOE MISS JOLENE

GEF OPEN BAR

OHL BOOGIE FEVER 4192B

SANDEEN LADY 114

DCC HARD DRIVE 138R

JSC KATIE 55

GVC SUH 01W

BOE KELSEY

ICE CHEST

GEF MISS IMPACT 100

SANDEEN SALUTE OR SURREN

14

ACT. BW

94

ACT. WW

844

CED	BW	WW	YW	MILK	TM	CEM	CW	REA	MB	FT
-2	4.3	60	81	14	45	-11	18	.29	.07	-.04

• Wayne & Barb Ohlrichs, Norfolk, NE

• The dam to this bull just does not miss. She is starting to get some age, but by looking at her you would never guess it. There has not been a single bull out of her that has not been in a Bright Lights Sale in Denver or OKC, including the second high selling bull in the 2021 sale to Willow Springs. This bull is maternally bred but absolutely does not give up any performance. He comes together in an absolutely stunning phenotype package. Big feet, sound as a cat and a big, powerful hip. If you want to raise Maine-Anjou bulls or females, this bull is the ticket.

30
bull

OHL KAHUNA 4127K

DOB 3/15/22 • AMAA 536314 • TATTOO RE AZ4127K

3/4 Maine • Black • Polled

BOE EPIC

DUEL ICON 802F

DUEL WORRY NOT 4303B

BPF KAHUNA 546Y

OHL ROLE MODEL 4127B

OHL BAR MAID 0127X

BOE GARTH

MISS BOE 502R

HETN NO WORRIES 138Z

DUEL MISS TRENDSETTER 1066

SLC SOONER 101M

BPF PRINCESS 52T

GEF OPEN BAR

5127 ANGUS

ACT. BW

90

ACT. WW

796

CED	BW	WW	YW	MILK	TM	CEM	CW	REA	MB	FT
5	1.2	39	55	23	42	-3	12	.27	.10	-.04

• Wayne & Barb Ohlrichs, Norfolk, NE

• This is not the first son that this cow has had that has been in the Bright Lights Sale. She can produce good females also, several of which have been kept back in the herd. No question that Icon was the real ticket on this cow. Kahuna is so flexible on the move, full of power and so smooth made. If you want to raise Maine-Anjou females with that extra look to sell for a premium or to make an incredible set of cows, this bull checks all the boxes.

31
bull

OHL KABOOM 4226K ET

DOB 3/23/22 • AMAA 536263 • TATTOO RE AZ4226K

3/4 Maine • Black • Polled

BOE GARTH

BOE MISS JOLENE

IRISH WHISKEY

JDH MISS WHISKEY 11A

SH CORA 8235

DCC HARD DRIVE 138R

JSC KATIE 55

GVC SUH 01W

BOE KELSEY

BK ICE PICK 472J

NTC 615 EVER READY

EXAR LUTTON 1831

R L H MISS REVEILLE 236

ACT. BW

91

ACT. WW

731

CED	BW	WW	YW	MILK	TM	CEM	CW	REA	MB	FT
-1	2.9	54	76	14	41	-5				

• Wayne & Barb Ohlrichs, Norfolk, NE

• It is a lot of fun when calving season comes around and that special one stands up and then stays special all summer and still is. You might say this one has all the bells and whistles, not only phenotype but also pedigree. He is a full brother to our high seller in the Bright Lights Sale two years ago to Willow Springs. No question...phenotype, performance, and pedigree, this one is special. Did we mention that his mother clicks no matter how she gets mated?

MAINE - ANJOU
BRIGHT
LIGHTS
Sale

MAINETAINER & MAINE ANGUS BULLS

Lots 32-44

32
bull

LADD JOKER 121J

DOB 11/8/21 • AMAA 536073 • TATTOO RE LADD / LE 121J

3/8 Maine • Black • Polled

BK XIKES X59
TJSC END GAME 61G ET
TJSC MISS HARMONY 58C

BK UNLIMITED POWER 472
GCC MISS WHISKEY 57R
GOET 180
BOLAN MISS HARMONY 533R

SVF STEEL FORCE S701
ETR MS STEEL D306
GCC MISS BENZ

CNS DREAM ON L186
SVF SHEZA BEAUTY L901

ACT. BW
70
ACT. WW
703

CED	BW	WW	YW	MILK	TM	CEM	CW	REA	MB	FT
-----	----	----	----	------	----	-----	----	-----	----	----

- Landgraf Cattle Co., Madill, OK
- Selling 1/2 interest and full possession. Seller retains 1/2 semen interest.
- Joker is huge footed, bold ribbed and still smooth and appealing in his design. He sets each hoof down straight and can get out and move. Take a look at his pedigree. We think this End Game son has a bright, bright future.



33
bull

CEBC FOREVER IN STYLE

DOB 1/8/22 • AMAA 530644 • TATTOO LE CEBC3K

1/4 Maine • Black • Scurred

GAMBLES HOT ROD
SILVEIRAS STYLE 9303
SILVEIRAS ELBA 2520

FAMOUS 7001
CHAMPION HILL LADY 703
TWIN VALLEY PRECISION E161
DAR ELBA 55

GOET DRIVING 80
PBC MISS NORA 2D
TRUD MISS DIXIE LILLIAN

GOET 180
BPF DESTINY 110W
WALKS ALONE
MISS LILLIAN LUCKY

ACT. BW
82
ACT. WW
NA

CED	BW	WW	YW	MILK	TM	CEM	CW	REA	MB	FT
0.7	56	88	16	44						

- Bockman Cattle / Courtney Bockman, Weeping Water, NE
- Forever in Style made his debut at the Junior National this summer in Louisville, where he was named Reserve Grand Champion MaineTainer Bull as a calf. He is flexible and structurally correct in his joints and angles, big middled, and balanced on the profile. His mother had her fair share of success as well and ended her show career as Champion MaineTainer at the 2017 Nebraska State Fair. She has had two calves by the great Silveiras Style, Forever in Style and his full sister, who was named Grand Champion Bred-and-Owned MaineTainer Female at the 2020 Junior National in Sioux Falls. Talk about consistency! This bull has demonstrated the same quality that his mother and full sib possess, and we are excited to see him pass this on to his offspring.





34

bull

BOE GARTH
BOE EPIC
MISS BOE 502R

FU MAN CHU
SCC HERA 2F
SLIK HERA 210

TLAC PACESETTER 9908K ET

DOB 2/20/22 • AMAA 534817 • TATTOO RE TLAC / LE 9908K

3/8 Maine • Black • Polled

MINN HARD WHISKEY 591Y
BOE MISS JOLENE
FJH ALL AMERICAN 501L

MONOPOLY
MISS DOLLY 309P

ACT. BW

80

ACT. WW

640

CED	BW	WW	YW	MILK	TM	CEM	CW	REA	MB	FT
	1.4	46	70	23	46					

- City View Farms, Tlach Family, Prole, IA

• Pacesetter is a maternal sib to the high selling bull in the 2022 Bright Lights Sale. He's very unique from a design standpoint, similar to his maternal brother, but we think many may consider this Epic son to be better than last year's consignment. Pacesetter is so elegant and long necked and still maintains the added width that we love. He stems from the great "Alice" donor in our program that was successfully campaigned by Jenna. She was Champion Owned Chi Female at the 2019 Junior National and has since found success in the donor pen. The Alice genetics are no miss when it comes to throwing stout featured, big legged animals. There is no doubt that this bull can make an impact in any operation and will help to continue to move the breed forward at a progressive pace.



35

bull

DADDY'S MONEY 55Z
BBR FX MAY WE ALL 6D
M.A.C. SHELBY 302A

SILVEIRAS STYLE 9303
BMW ERR KATIE 102H ET
MINN KATIE 9B

DUNK C4BARKER POWERBALL 234K

DOB 2/26/22 • AMAA 536111 • TATTOO LE DUNK234K

3/8 Maine • Black • Polled

GOET 180
JSC VELVET 112W
IRISH WHISKEY

GAMBLES HOT ROD
SILVEIRAS ELBA 2520
PREDATOR 19U
JSC KATIE 5S

ACT. BW

78

ACT. WW

730

CED	BW	WW	YW	MILK	TM	CEM	CW	REA	MB	FT
9	-1.1	38	56	26	45	5	8	.21	.20	-.02

- Dunk Cattle Co. / C4 Cattle, Barker Family, Wayne, NE

• This bull is like hitting the lottery, offering look and balance backed with calving ease and maternal merit. He is the first calf out of the powerful Maine Angus female whose pedigree needs no introduction—Hadley campaigned her last year with a great deal of success. Her sire is a go to for calving ease and quality. This bull has the quality and pedigree to advance any operation.



36

bull

BBBN X2 201X
BNWZ DATA BANK 1311C ET
BNWZ CALYPSO 28Y

DOCTOR WHO
MENT185A

MENT DATA OVERLOAD 185K

DOB 3/10/22 • AMAA 535191 • TATTOO LE MENT185K

1/2 Maine • Black w/ White Marks • Polled

GVC STATESMAN 4R ET
BOSS BEAUTY 84M
SLC SOONER 101M
DLB MISS WHISKEY 2T
WHO MADE WHO 411F 1CM
VELD QUEEN

ACT. BW

80

ACT. WW

755

CED	BW	WW	YW	MILK	TM	CEM	CW	REA	MB	FT
12	0.0	43	60	21	42	-3				

- Mente Cattle Co., Adrian, MN

• Here is an ultra-complete bull that we are offering out of our Panda donor. Several sisters have sold and done well for their new families. We just love this bull's depth and shape of rib. It blends into a smooth shoulder and a long, level hip—not to mention that he has some power also. We project he will sire both females and good doing, good feeding cattle. Please stop by and take a look. Everyone loves a baldy.

37
bull

MKCF BANK SHOT 001K

DOB 3/20/22 • AMAA 536010 • TATTOO RE 001K / LE MKCF

5/8 Maine • Black • Scurred

BBBN X2 201X
BNWZ DATA BANK 1311C ET
BNWZ CALYPSO 28Y

GVC STATESMAN 4R ET
BOSS BEAUTY 84M
SLC SOONER 101M
DLB MISS WHISKEY 2T
BPF MERCEDES BENZ 131U
NMR 0-04X

NMR MATERNAL MADE
CLNS FRANCIS 8534
MYKIND 3165

ACT. BW
84
ACT. WW
604

CED	BW	WW	YW	MILK	TM	CEM	CW	REA	MB	FT
10	0.0	44	62	21	43	-2				

- **Black Crest Cattle, Corwine Family, Quenemo, KS**
- There should be a lot of excitement that surrounds this Data Bank son. His performance, structural integrity and muscle volume make him a great candidate for your next herd sire. We recently sold a maternal sister at our state show and sale for \$4,300 that was breed champion at a jackpot show in Oklahoma. His dam was the high selling bred heifer in the 2019 Dakota Classic Sale from Vanhove Cattle Co. His genetics combined with his phenotype could bring added value to any herd.



38
bull

JABR ELEVATE 248K ET

DOB 3/28/22 • AMAA P536124 • TATTOO LE JABR248K

1/2 Maine • Black • Polled

GAMBLES HOT ROD
SILVEIRAS STYLE 9303
SILVEIRAS ELBA 2520

FAMOUS 7001
CHAMPION HILL LADY 703
TWIN VALLEY PRECISION E161
DAR ELBA 55

ALL THAT MATTERS 109B
BNBA ENDEAVOR 113E
BK CMCC ABBIE 316

MINN HARD WHISKEY 591Y
MINN PORSCHE 109W
BK UNLIMITED POWER 472
BK UNFORSAKEN 8050

ACT. BW
70
ACT. WW
780

CED	BW	WW	YW	MILK	TM	CEM	CW	REA	MB	FT
6	1.5	51	77	16	41	1				

- **SL & Jenna Craft, Anadarko, OK**
- **Selling 2/3 interest and full possession. Seller retains 1/3 semen interest.**
- Elevate has been a standout since day one. This calf possesses so much natural thickness with the show ring look we all want and desire. Before the Maine Angus division was a thing, we ran more Maine Angus bulls on our commercial cattle than any other breed. When describing the Maine Angus cattle, we like to consider them the perfect breeding. What is so intriguing about this bull is that he can work so many ways, from making high % Maine-Anjou, Mainetainers or continuing to produce Maine Angus.



39
bull

JFRMS KOOL KAT 02K

DOB 3/29/22 • AMAA 534332 • TATTOO BE BJ02K

1/4 Maine • Black • Horned

BPF MERCEDES BENZ 131U
NMR MATERNAL MADE
NMR 0-04X

COWAN'S ALI 4M
DCC MERCEDES 701P
IRISH WHISKEY

GCC BLACK WATCH 849T
KDJ RUBY 570
KDJ RUBY 273

DCC 814G TRAILBLAZER 400
OCC PRIMROSE 932L
DUFF ANGUS 011
A W S RUBY 306

ACT. BW
73
ACT. WW
565

CED	BW	WW	YW	MILK	TM	CEM	CW	REA	MB	FT
-----	----	----	----	------	----	-----	----	-----	----	----

- **Brett Jones, Ardmore, OK**
- This Maternal Made son is a high quality individual, backed by an awesome Angus cow. We love how stout featured and deep bodied this bull is on top of a smooth running set of wheels. Talk about a great herd sire prospect!




40
bull

BARKERS GAME CHANGER

DOB 4/30/22 • AMAA 532703 • TATTOO LE CBKR89K

1/2 Maine • Black • Polled

BBR CAIN 530C
BARKER'S MR. HIGHWAYMAN
BARKERS MISS SCARLET

NMR MATERNAL MADE
BBR FABULOUS 898F ET
CGMC SEDGWICKS ERICA 5T

BBBN X 483X
AN X MA 509
GOET 180
RILEY MS SWEETHEART X522
BPF MERCEDES BENZ 131U
NMR 0-04X
IRISH WHISKEY
SEDGWICKS ERICA 855

ACT. BW

60

ACT. WW

425

CED	BW	WW	YW	MILK	TM	CEM	CW	REA	MB	FT
4	1.1	44	61	18	39	-4				

- C4 Barker Show Cattle, Kearney, MO
- Game Changer is sired by Barker's Mr. Highwayman, who was Reserve Grand Champion MaineTainer bull twice—first at the Junior National and then at the 2020 Fort Worth Stock Show. Game Changer's dam was purchased from Blind Badger in their 2018 sale. The Maternal Made daughter was a feature of the sale, being Lot 2. She has been a consistent producer. Don't miss out on this complete, well balanced, sound, big haired, calving ease bull. He is most certainly a Game Changer!


41
bull

PRV JEALOUS GUY 23J

DOB 4/1/21 • AMAA 536015 • TATTOO LE PRV23J

1/2 Maine • Black • Polled

NMR MATERNAL MADE
DUEL AINT BLUFFIN 701E
DUEL PADDY O 4231

MEFC ADVANTAGE 029X
PRV MS ADVANTAGE 5175C
PRV MS STAR 2085Z

BPF MERCEDES BENZ 131U
NMR 0-04X
PADDY OMALLEY
DUEL 8015
JSC ADVANTAGE 257T
RDD POLO P415 2CA
GOET 180
NBH FIVE STAR 902R

ACT. BW

89

ACT. WW

608

CED	BW	WW	YW	MILK	TM	CEM	CW	REA	MB	FT
5	2.1	46	61	17	40	-2				

- Par 5 Cattle Co., Lake City, SD
- We have always appreciated the build of this bull and his really solid pedigree as well. With DUEL Ain't Bluffin semen in short supply, the next best thing is an Ain't Bluffin son. You will appreciate the balance, extension and build of this blaze-faced bull. His mother is the first daughter of our PRV Ms Star 2085Z donor.

DUEL Aint Bluffin 701E Sire of Lot 41

42
bull

PRV JACK SPARROW 66J ET

DOB 4/3/21 • AMAA 535850 • TATTOO LE PRV66J

1/2 Maine • Black • Polled

DAMERON FIRST CLASS
COLBURN PRIMO 5153
SILVEIRAS SARAS DREAM 1339

GOET 180
PRV MS STAR 2085Z
NBH FIVE STAR 902R

EXG RS FIRST RATE S903 R3
DAMERON NORTHERN MISS 3114
SILVEIRAS STYLE 9303
EXG SARAS DREAM S609 R3
COWAN'S ALI 4M
BPF MILEY 80T
HHP ONE-FIFTY 231L
NETHERDALE MISS MEAGHAN

ACT. BW

88

ACT. WW

612

CED	BW	WW	YW	MILK	TM	CEM	CW	REA	MB	FT
4	1.6	57	83	18	47	2	20	.30	.18	-.02

- Par 5 Cattle Co., Lake City, SD
- This Primo son is backed by our leading donor, PRV Ms Star 2085Z. She has produced a long list of show and sale heifers, multiple show and herd bulls, and multiple replacement females for us. The best bulls are always backed by cows that produce. Study the pedigree, then study this MaineTainer bull.

PRV Ms Star 2085Z Dam of Lot 42 and maternal granddam of Lot 41

43
bull

PRV JOURNEYMAN 110J

DOB 4/14/21 • AMAA 536050 • TATTOO LE PRV110J

3/8 Maine • Black • Polled

NMR MATERNAL MADE
GCC MASTERPIECE 421G ET
GCC MISS WHISKEY 5066

BPF MERCEDES BENZ 131U
NMR 0-04X
IRISH WHISKEY
MISS COLDFRONT 3066

BOYD CATALYST 1071
PRV MS CATALYST 5134C
PRV MS JASMINE 3273A

CONNEALY CONSENSUS 7229
EXAR LADY 84152
BNWZ PATRIOT 29X
PRV MS M4 JAZZ 0001X

ACT. BW
97
ACT. WW
604

CED	BW	WW	YW	MILK	TM	CEM	CW	REA	MB	FT
7	0.8	42	64	19	40	2	18	.36	.21	-.03

- **Par 5 Cattle Co., Lake City, SD**
- This is one big bodied, soft made son of GCC Masterpiece. If you like your bulls soggy, soft and deep, this bull is your kind. His mother traces back to one of the first show heifers that Haley showed and has produced some really solid performing cows.



GCC Masterpiece 421G ET Sire of Lot 43

44
bull

PRV JETSTREAM 152J

DOB 4/22/21 • AMAA 535852 • TATTOO LE PRV152J

3/8 Maine • Black • Polled

STRAIGHT JACKET 101X
PRV DOUBLE DOWN 6240D
PRV MS STAR 2085Z

JACKET 101T
BBB KAREN 035R
GOET 180
NBH FIVE STAR 902R

MONOPOLY
BPF PRINCESS 300A
DCCO PLAYMATE 701P

HEAT WAVE
W T F RUTH MEDINA
DOCTOR WHO
DCC PLAYMATE 333F

ACT. BW
91
ACT. WW
615

CED	BW	WW	YW	MILK	TM	CEM	CW	REA	MB	FT
1	3.1	43	57	20	41	-4	4	.21	.06	-.03

- **Par 5 Cattle Co., Lake City, SD**
- Justin showed the full brother to this bull at the Junior National in Des Moines. Their sire, PRV Double Down, was shown at the Junior National in Hutchinson, KS, and we used him here with considerable success. The 300A cow was a show heifer that is a direct daughter of "Mercedes" 701P. Great combination of phenotype and pedigree here. Make sure to look him up at the Bright Lights Sale.



Full brother to Lot 44

THE AMERICAN MAINE-ANJOU ASSOCIATION'S MAINE ANGUS PROGRAM

WHAT IS MAINE ANGUS? The Maine Angus program is an initiative created by the American Maine-Anjou Association (AMAA) to showcase the complementation of Maine-Anjou genetics when crossed with Angus or Red Angus cattle. This program will reveal Maine-Anjou cattle's ability to enhance feed efficiency and red meat yield when placed on British-based genetics. This program should provide seedstock that will increase production and carcass yield through heterosis.

The name Maine Angus is both strong and informative by stating exactly what breeds are present in said animal. The standard requirement is that both parents must be registered at the AMAA, American Angus Association (AAA) or Red Angus Association of America (RAAA). This will provide confirmed lineage and genetic information along with valuable EPDs. Through a partnership with the AAA, EPDs are updated with the latest genetic evaluation by the AAA, which will provide breeders and customers the best genetic prediction available. This program is focused on producing quality registered offspring that will aid in the incorporation of Maine-Anjou genetics into the mainstream of the USA beef sector.

PROGRAM STANDARDS Maine Angus refers to cattle with the following characteristics: a) The animal will have from 3/8 Maine-Anjou to 5/8 Maine-Anjou blood and have from 3/8 registered Angus to 5/8 registered Angus and/or registered Red Angus blood; b) Both parents must be registered at the AMAA, AAA or RAAA to confirm lineage; c) Qualifying cattle can have no more than 1/8 of non-registered blood or other breeds; d) A registered Maine Angus bull must be proven free of genetic defects PHA and TH. Depending on the Maine Angus bull's genetic makeup, the individual must also be proven free of known Angus lethal genetic defects (e.g. AM, NH and CA) and/or known lethal Red Angus genetic defects (e.g. AM, NH, CA and OS), whether determined by pedigree or test; e) A registered Maine Angus female must be proven free of PHA and TH, whether identified by pedigree or test.

MAINE ANGUS COLOR STANDARDS All qualifying individuals will be predominantly solid black or red in color. White markings are only allowed on the underline and switch of the tail. Feet and legs must be solid black or red. NOTE: All Maine Angus animals that do not meet the color requirement but were registered prior to Jan. 1, 2019, will retain their Maine Angus papers. They will not be able to exhibit/show in the Maine Angus division but are still eligible to show as Mainetainers. If an animal is registered Maine Angus but is found to not meet the color requirements, they will be reverted to a Mainetainer registration.



Full sister to dam of Lots B–C–D embryos



BBR Memphis Mafia 3E ET

Sire of Lot B embryos



BOE Gronc ET

Sire of Lot C embryos



KBSC New Decade 68G ET

Sire of Lot D embryos
(1/3 semen interest
sells as Lot A)

Embryo Packages

Offering 3 embryo matings
out of **GVC Marilea 34Y**



MEMPHIS MAFIA X 34Y

3 Sexed Female Embryos • PB Maine

GOET I80
BBR MEMPHIS MAFIA 3E ET
GEF MISS DOMINATRIX 236A

GVC MAVERICK 05U
GVC MARILEA 34Y
MISS GREEN VALLEY 535R

Mating EPDs:

CED	BW	WW	YW	MILK	TM	CEM	CW	REA	MB	FT
3	1.0	43	59	23	44	-5	15	.39	.14	-.04

- 570 Genetics—Matt Gunderson & Frank Kralicek, Jr., Yankton, SD
- Selling a package of three sexed female embryos sired by Memphis Mafia.



GRONC X 34Y

3 Embryos • PB Maine

BOE EPIC
BOE GRONC ET
BOE 432B

GVC MAVERICK 05U
GVC MARILEA 34Y
MISS GREEN VALLEY 535R

Mating EPDs:

CED	BW	WW	YW	MILK	TM	CEM	CW	REA	MB	FT
-2	2.8	46	68	22	44	-8	18	.35	.21	-.05

- 570 Genetics—Matt Gunderson & Frank Kralicek, Jr., Yankton, SD
- Selling a package of three embryos sired by Gronc.



NEW DECADE X 34Y

3 Sexed Female Embryos • 3/4 Maine

PRIMETIME
KBSC NEW DECADE 68G ET
KBSC CHK 035X

GVC MAVERICK 05U
GVC MARILEA 34Y
MISS GREEN VALLEY 535R

Mating EPDs:

CED	BW	WW	YW	MILK	TM	CEM	CW	REA	MB	FT
4	1.8	43	60	18	39	-3				

- 570 Genetics—Matt Gunderson & Frank Kralicek, Jr., Yankton, SD
- Selling a package of three sexed female embryos sired by New Decade (Lot A).

45
cow

CASSIE ET

DOB 3/11/22 • AMAA 536078 • TATTOO RE NDEK04
PB Maine • Black • Polled

MINN LIVE ACTION 203Y
SWEET WILLIE 890F ET
BSC HEY THERE DELILAH95Y

GOET I80
HPF SHELBY D016 ET
MOORE SHELBY 283Y

PREDATOR 19U
JSC KATIE 5S
BSC SIMPLICITY 44U
KBSC VERONICA 838U
COWAN'S ALI 4M
BPF MILEY 80T
SLC SOONER 101M
WLE CNS SHELBY T33S

ACT. BW
70
ACT. WW
515

CED	BW	WW	YW	MILK	TM	CEM	CW	REA	MB	FT
12	0.5	38	47	22	40	1				

- **Natalie Dearwester, Camp Point, IL**
- Here is a beautiful, perfect baldy that's really sound, great fronted and extremely easy going. She would be perfect for a first time exhibitor. Sired by Sweet Willie and backed by Shelby, she is a can't miss!
- Sells open.

THE FEMALE DIVISION

PUREBRED / HIGH MAINE HEIFERS

Lots 45-56

46
cow

DJ KAT K210 ET

DOB 3/1/22 • AMAA 532163 • TATTOO LE DJBK210
3/4 Maine • Black w/ White Marks • Scurred

BOE GARTH
DJ FORTRESS F802
DJB DE B17

GVC REPRINT A07
DJ BUFFY F10
DJ BUFFY B10

MINN HARD WHISKEY 591Y
BOE MISS JOLENE
GVC NEWT Y54
DE Y140
GVC SUH 01W
GVC 874U
DJ X MILLIRON Y467
DJB 210W

ACT. BW
100
ACT. WW
796

CED	BW	WW	YW	MILK	TM	CEM	CW	REA	MB	FT
0	3.6	39	64	36	60	-5	31	.45	.28	.00

- **Dejong Ranch, Kennebec, SD**
- A versatile heifer with good numbers that showcases the best of our genetics. Her mother was the high selling heifer in our production sale in 2019. Kat is the product of a retained flush from the stylish GVC Reprint daughter. She has the style of her mother and the power of DJ Fortress. Kat could be used to create some fun show heifers, clubby options, or even production focused offspring.
- Sells open.



47
cow

TLAC MISS DEAL EM UP 1405K

DOB 3/25/22 • AMAA 534774 • TATTOO RE TLAC / LE 1405K
3/4 Maine • Black • Polled

BOE GARTH
BOE DONE DEAL
BOE 425BK

BOJO
JTPM MISS REGAN 72B
GCC MILLER M031 290X

MINN HARD WHISKEY 591Y
BOE MISS JOLENE
NAGE ANTE UP 70Z
BOE 913W
COWAN'S ALI 4M
SLC SOONER 101M
LEIGHBERT MISS M031

ACT. BW
80
ACT. WW
530

CED	BW	WW	YW	MILK	TM	CEM	CW	REA	MB	FT
6	1.8	54	70	12	39	-6				

- **City View Farms, Tlach Family, Prole, IA**
- This is our first time that we have brought a heifer to a live sale, and this one is going to be hard to see go. She is sired by Done Deal from Griswold and backed by our Regan donor. In her time at our place, Regan has raised many heifers that have been in our show barn, and this one is of that caliber. Regan has produced multiple Junior National division champions. We really like the true shape that this heifer has and think that she will be truly unique in the show ring and beyond. As a High Maine, the breeding possibilities are endless with this one.
- Sells open.





48

cow

GOET I80
DADDYS MONEY 55Z
JSC VELVET 112W

BOE EPIC
CMCC FILTHY RICH 802 ET
CMCC YUPPIE 104

WSCC KELSEY 64K ET

DOB 4/2/22 • AMAA 536069 • TATTOO RE WSCC / LE 64K

3/4 Maine • Black • Polled

COWAN'S ALI 4M
BPF MILEY 80T
HAA WISDOM 505S
SF NURSES AIDE 378

BOE GARTH
MISS BOE 502R
BK UNLIMITED POWER 472
BK RENEGADE 5010

ACT. BW

NA

ACT. WW

450

CED	BW	WW	YW	MILK	TM	CEM	CW	REA	MB	FT
9	-1.3	38	47	18	37	1	6	.16	.06	-.03

- Willow Springs Cattle Co., Prairie Grove, AR
- Stout, bold and robust, this is a powerful built 3/4 Maine heifer that will make raising the next generation fun. Not every day do they combine this amount of skeletal mass and body shape with a good look and sound skeleton like this female does. Backed by the high seller out of Buck's fall production sale, this female will be a blast to show and equally as fun to have in the donor pen.
- Sells open.



49

cow

MINN HARD WHISKEY 591Y
BOE GARTH
BOE MISS JOLENE

NMR MATERNAL MADE
CGCC HEAVENLY MADE 132H ET
CMCC ENTER UP 708 ET

RIM KEYSTONE 178K ET

DOB 5/5/22 • AMAA 536257 • TATTOO RE RIM / LE 178K

PB Maine • Black • Horned

DCC HARD DRIVE 138R
JSC KATIE 5S
GVC SUH 01W
BOE KELSEY

BPF MERCEDES BENZ 131U
NMR 0-04X
BK XIKES X59
BK RANNA 5030

ACT. BW

75

ACT. WW

NA

CED	BW	WW	YW	MILK	TM	CEM	CW	REA	MB	FT
-1	3.1	49	66	15	40	-9	21	.38	.06	-.04

- Sara Rimpel, Athens, TX
- This BOE Garth daughter brings plenty to appreciate. With her striking profile, she presents you with a feminine front 1/3. She is clean through her chest floor, smooth through her shoulder design and has a feminine neck and head design to top it off. She is also bold sprung and three dimensional through the center portion of her body with plenty of depth. A stout hip design that transitions to a wide pin set and down into an attractive leg design. A full sib has already made a name for herself on the Texas jackpot scene, visiting multiple backdrops as the Champion Maine-Anjou Female. Enjoy the success this heifer is sure to bring, both as a show heifer and as a breeding piece.
- Sells open.



50

cow

MINN LIVE ACTION 203Y
SWEET WILLIE 890F ET
BSC HEY THERE DELILAH95Y

DJ ENHANCER E701 ET
NAGE MS ENHANCER 230H
NAGE MS IMPRESS 46D

TTTS KERRY 33K

DOB 5/7/22 • AMAA 535389 • TATTOO LE TTTS33K

3/4 Maine • Black • Polled

PREDATOR 19U
JSC KATIE 5S
BSC SIMPLICITY 44U
KBSC VERONICA 838U

ALL THAT MATTERS 109B
GVC TESSA 35X
GVC LASTING IMPRESSION
SMM EXTRA SPECIAL 3820A

ACT. BW

135

ACT. WW

538

CED	BW	WW	YW	MILK	TM	CEM	CW	REA	MB	FT
8	5.2	47	65	18	42	0	16	.43	.10	-.03

- Trae Simmons, Carthage, IN
- Sired by the ever-popular Sweet Willie, this heifer is out of a good, young cow purchased from the heart of the Nagel program. The Nagel program needs no introduction on the quality of their females, and this one replicates that mold of style, substance, and structural quality. The sky's the limit for this female.
- Sells open.

51
cow

TTTS KYRA 22K ET

DOB 5/15/22 • AMAA 535908 • TATTOO LE TTTS22K

PB Maine • Black • Horned

DMCC LIMITED EDITION 4F
BK UNLIMITED POWER 472
PANNELL MISS 4072

DMCC POLLEROID 29A ET
DAZZLERS FANCY DANCER
DRAFT PICK
PANNELL MISS 830

ACT. BW

65

ACT. WW

540

GOET I80
TTTS CICI 22B
TTTS CENTERFOLD 7Y

COWAN'S ALI 4M
BPF MILEY 80T
COWAN'S ALI 4M
TTTS TOMMY GIRL 6N

CED	BW	WW	YW	MILK	TM	CEM	CW	REA	MB	FT
17	-0.5	36	49	25	43	6				

- Trae Simmons, Carthage, IN
- This Unlimited Power daughter is backed by the Simmons Cici 22B donor. Unlimited Power needs no introduction as a sire of champions, and Cici 22B is creating quite the track record as well. This beginner showman disposition female exemplifies elegance and feminine quality. Full sister to Lot 52.
- Sells open.



52
cow

TTTS KYLA 23K ET

DOB 5/22/22 • AMAA 535909 • TATTOO LE TTTS23K

PB Maine • Black • Horned

DMCC LIMITED EDITION 4F
BK UNLIMITED POWER 472
PANNELL MISS 4072

DMCC POLLEROID 29A ET
DAZZLERS FANCY DANCER
DRAFT PICK
PANNELL MISS 830

ACT. BW

68

ACT. WW

543

GOET I80
TTTS CICI 22B
TTTS CENTERFOLD 7Y

COWAN'S ALI 4M
BPF MILEY 80T
COWAN'S ALI 4M
TTTS TOMMY GIRL 6N

CED	BW	WW	YW	MILK	TM	CEM	CW	REA	MB	FT
17	-0.2	36	49	25	43	6				

- Trae Simmons, Carthage, IN
- Another ultra good Unlimited Power daughter out of the Simmons 22B cow, Kyla has maternal power written all over her. Unlimited Power daughters are top producers in herds all over the country, and this one will be no different. On top of her maternal quality, she is beginner showman safe and we believe has all the pieces to be a fun show heifer. Full sister to Lot 51.
- Sells open.



53
cow

TTTS KARINA 24K

DOB 5/25/22 • AMAA 535388 • TATTOO LE TTTS24K

3/4 Maine • Black • Polled

BSC SIMPLICITY 44U
KBSC SIMPLIFY 22C
AGH IRISH CREAM

COWAN'S ALI 4M
MAJORS MS 606S
GOET I80
AGH LATTA

ACT. BW

70

ACT. WW

NA

DJ ENHANCER E701 ET
NAGE MS ENHANCER 248H
NAGE MS MESSENGER 146C

ALL THAT MATTERS 109B
GVC TESSA 35X
GVC MESSENGER 046Z
NAGE MS BOUNCER 357X

CED	BW	WW	YW	MILK	TM	CEM	CW	REA	MB	FT
3	-4.3	51	70	19	45	-1	28	.49	.10	-.03

- Trae Simmons, Carthage, IN
- This Simplify daughter is out of a good, young future donor from the heart of the Nagel program. Make sure and find this long necked, big bodied, extra fancy gal sale day. Oh, and as a bonus she's first time showman gentle!
- Sells open.





54
cow

ECC BLACKBIRD 222K

DOB 4/10/22 • AMAA 533083 • TATTOO LE EBAD222K

3/4 Maine • Black • Polled

MINN HARD WHISKEY 591Y
ECC HARD CUT X021D
ECC WINSOME 021X

DCC HARD DRIVE 138R
JSC KATIE 5S
EBES LIBERTY 127L

DAINES DR SEUSS 79P
ECC BLACKBIRD 081B
ECC BLACKBIRD 081X

FJH SPECIAL EDITION 505M
DAINES MISS BILT 19E
EBES LIBERTY 127L
RM BLACKBIRD 330

ACT. BW
68

ACT. WW
800

CED	BW	WW	YW	MILK	TM	CEM	CW	REA	MB	FT
3	2.5	40	52	18	37	3				

- Ebersole Cattle Co., Kellerton, IA
- This cow family has done amazing for us. Dr. Suess females have the ability to work, and her mother is no exception. This one really combines a maternal look with power, giving her the ability to perform in and out of the ring.
- Sells open.



55
cow

ECC FREYA 225K

DOB 4/15/22 • AMAA 533086 • TATTOO LE WCE225K

3/4 Maine • Black • Horned

MINN HARD WHISKEY 591Y
ECC HARD CUT X021D
ECC WINSOME 021X

DCC HARD DRIVE 138R
JSC KATIE 5S
EBES LIBERTY 127L

MINN HARD WHISKEY 591Y
ECC BLACKBIRD 786E
ECC BLACKBIRD 081X

DCC HARD DRIVE 138R
JSC KATIE 5S
EBES LIBERTY 127L
RM BLACKBIRD 330

ACT. BW
69

ACT. WW
750

CED	BW	WW	YW	MILK	TM	CEM	CW	REA	MB	FT
4	1.8	40	53	12	32	1				

- Ebersole Cattle Co., Kellerton, IA
- This heifer caught our attention early on. From her elegant front one-third to her maternal rib design, she will be one to watch. She ties back to our Blackbird cow family, which has been a foundation female for our program.
- Sells open.



56
cow

ECC KELSEY 224K

DOB 5/10/22 • AMAA 533085 • TATTOO LE EBAD102J

3/4 Maine • Black • Polled

MINN HARD WHISKEY 591Y
ECC HARD CUT X021D
ECC WINSOME 021X

DCC HARD DRIVE 138R
JSC KATIE 5S
EBES LIBERTY 127L

MINN HARD WHISKEY 591Y
ECC KELSEY 214E
ECC MISS KELSEY 214Y

DCC HARD DRIVE 138R
JSC KATIE 5S
K&A TRY ME 42T
ECC KELSEY 214M

ACT. BW
71

ACT. WW
600

CED	BW	WW	YW	MILK	TM	CEM	CW	REA	MB	FT
5	2.3	47	63	13	37	1				

- Ebersole Cattle Co., Kellerton, IA
- A class winner at the American Royal, this heifer is out of our Kelsey cow family that continues to produce high quality females for us. This heifer is an absolute sweetheart and has the power and style to compete, along with the potential to be a revenue generating cow after her show career.
- Sells open.

MAINE - ANJOU
BRIGHT
LIGHTS
Sale

MAINETAINER & MAINE ANGUS FEMALES

Lots 57-65

57
cow

ECC SARA LYNN 102J

DOB 3/6/21 • AMAA 520855 • TATTOO LE EBAD102J

3/8 Maine • Black • Polled

GOET I80
DADDYS MONEY 55Z
JSC VELVET 112W

COWAN'S ALI 4M
BPF MILEY 80T
HAA WISDOM 505S
SF NURSES AIDE 378

DAMERON FIRST CLASS
SILVEIRAS SARAS DREAM 1339
GAMBLES HOT ROD
CENTURY SARA 270

MAINE
ANGUS

ACT. BW

73

ACT. WW

545

COLBURN PRIMO 5153
CB SARA 715
CENTURY SARA 3X

CED	BW	WW	YW	MILK	TM	CEM	CW	REA	MB	FT
4	-0.6	53	73	11	38	0	9	.15	.11	-.02

- Ebersole Cattle Co., Kellerton, IA
- This is a hard female for us to let go, because she is exactly the type and kind we have tried to produce for so many years. Moderate, easy feeding, powerful and due to calve on her second birthday. Her calf could give you a very fast return on investment.
- Bred AI to BNWZ Data Bank 1311C ET. Checked safe, due 3/6/23.



58
cow

CF JAIME 13J

DOB 5/15/21 • AMAA 531085 • TATTOO LE COMP13J

3/8 Maine • Black • Polled

HERE I AM
BEAR MOUNTAIN

WALKS ALONE
GORS 805

GOET I80
TLS ISIS
RIST SUPER SIS 721P

COWAN'S ALI 4M
BPF MILEY 80T
EBB STRICTLY BUSINESS
AN X SM 721

ACT. BW

83

ACT. WW

612

CED	BW	WW	YW	MILK	TM	CEM	CW	REA	MB	FT
13	2.0	41	55	17	37	0				

- Compton Cattle, Stanwood, IA
- This bred heifer is flawless in her structure. She can flat move with the best of them. Her dam is one of our best producers. We have sold three steers and kept back two heifers out of her dam. If you're looking for a steer producer or a breeding heifer, this girl can do both. Bid to own.
- Bred AI 5/16/22 to BBR FX May We All 6D (sexed female). Checked safe AI. Pasture exposed 5/20/22 to 6/15/22 to Angus bull.





59
cow

PKL KATRINA 79K

DOB 3/21/22 • AMAA 536354 • TATTOO RE 79K / LE PKL

1/2 Maine • Black • Polled

BOE GARTH

MINN HARD WHISKEY 591Y

BOE MISS JOLENE

MR HOC BROKER

BALDY COMMERCIAL 79C

DCC HARD DRIVE 138R

JSC KATIE 5S

GVC SUH 01W

BOE KELSEY

SVF STEEL FORCE 5701

JM BF H25

ACT. BW

77

ACT. WW

NA

CED	BW	WW	YW	MILK	TM	CEM	CW	REA	MB	FT
3.5	56	78	15	43				.38	.21	-.03

- Parker Lockhart, Fort Gibson, OK
- PKL Katrina 79K is an eye-catching blaze-faced female that has that show ring presence that demands the attention of everyone. She is sired by the Maine-Anjou breed changing bull BOE Garth and out of a tremendously maternal Broker donor. Katrina not only has that backdrop picture profile but has the body volume and soundness of a future donor cow. You will be hard pressed to find another heifer with the structural integrity, maternal look and amazing blaze face that Katrina possesses. Katrina has future banners and top progeny while having an excellent disposition.
- Sells open.



60
cow

ANNIE ET

DOB 3/12/22 • AMAA 536199 • TATTOO RE NDEK06

3/8 Maine • Black • Polled

W/C RELENTLESS 32C

YARDLEY UTAH Y361

MISS WERNING KP 8543U

GOET I80

HPF SHELBY D016 ET

MOORE SHELBY 283Y

GCC HARD AS STEEL 144W

MISS YARDLEY T170

WAGR DREAM CATCHER 03R

MISS WERNING 534R

COWAN'S ALI 4M

BPF MILEY 80T

SLC SOONER 101M

WLE CNS SHELBY T335

ACT. BW

65

ACT. WW

550

CED	BW	WW	YW	MILK	TM	CEM	CW	REA	MB	FT
16	0.8	47	59	26	50	-2				

- Natalie Dearwester, Camp Point, IL
- This Relentless x Shelby heifer is one that is huge middled, really sound and extremely gentle to boot. A maternal sister sells as Lot 62.
- Sells open.



61
cow

HOLT MS KHLOE K63

DOB 4/4/22 • AMAA 536191 • TATTOO RE HOLT / LE K63

1/2 Maine • Black w/ White Marks • De-horned

BNWZ DATA BANK 1311C ET

BBBN X2 201X

BNWZ CALYPSO 28Y

MEYER RANCH 734

BFJV MISS MEYER A63

BFJV MISS DRIVER 63Y

GVC STATESMAN 4R ET

BOSS BEAUTY 84M

SLC SOONER 101M

DLB MISS WHISKEY 2T

MR BLACK GX 6W

MISS GX 728R

WAGR DRIVER 706T

163

ACT. BW

64

ACT. WW

595

CED	BW	WW	YW	MILK	TM	CEM	CW	REA	MB	FT
0.2	47	69	22	46						

- Holt Cattle Co., Mina, SD
- This Data Bank daughter checks all the boxes. She is a chromed-up gal that is as good looking as you can make one, offering added style and eye appeal with a perfectly designed rib cage. Long and extended in her neck with a pretty and feminine head, she has a perfect hind leg with the right kind of structure for the ring and the pasture. She is a maternal masterpiece, being a Data Bank daughter out of a picture-perfect, blaze-faced daughter of Meyer 734 from a WAGR Driver cow, two of the most maternally driven bloodlines in the Simmental breed. This MaineTainer female will also register as a 3/8 Simmental. She will show at the highest level and be the kind of breeding piece to build a herd around. Show broke and little kid approved with a great disposition but enough sass to get it done in the show ring.
- Sells open. Retaining two successful flushes at the buyer's convenience and seller's expense.

62

cow

BEYONCE ET

DOB 4/6/22 • AMAA 536079 • TATTOO RE NDEK05

3/8 Maine • Black • Polled

DAMERON FIRST CLASS
COLBURN PRIMO 5153
SILVEIRAS SARAS DREAM 1339

EXG RS FIRST RATE S903 R3
DAMERON NORTHERN MISS 3114
SILVEIRAS STYLE 9303
EXG SARAS DREAM S609 R3
COWAN'S ALLI 4M
BPF MILEY 80T
SLC SOONER 101M
WLE CNS SHELBY T335

MAINE
ANGUS

ACT. BW

65

ACT. WW

500

GOET I80
HPF SHELBY D016 ET
MOORE SHELBY 283Y

CED	BW	WW	YW	MILK	TM	CEM	CW	REA	MB	FT
8	0.0	55	79	19	46	1				

- **Natalie Dearwester, Camp Point, IL**
- Here's a Primo x Shelby and one that should catch your attention with all the bells and whistles! She's sound, big bellied, great necked and just a really nice show heifer. A maternal sister sells as Lot 60.
- Sells open.



HPF Shelby D016 ET *Dam of Lots 60 and 62*

63

cow

WSCC KELLY 46K ET

DOB 5/2/22 • AMAA 536068 • TATTOO RE WSCC / LE 46K

1/2 Maine • Black • Polled

MINN LIVE ACTION 203Y
BSC FREEDOM 147 F ET
BSC AALEYAH 74A

PREDATOR 19U
JSC KATIE 5S
BPF MERCEDES BENZ 131U
K&A CELEST 517R
DAMERON FIRST CLASS
SILVEIRAS SARAS DREAM 1339
PLAINVIEW LUTTON E102
CHAIR ROCK GRID MAKER 404

MAINE
ANGUS

ACT. BW

75

ACT. WW

455

COLBURN PRIMO 5153
BPC CVV ADELE 54E
JEM ADELE 11A

CED	BW	WW	YW	MILK	TM	CEM	CW	REA	MB	FT
1.1	41	56	18	39						

- **Willow Springs Cattle Co., Prairie Grove, AR**
- Flashy yet functional. This Maine Angus heifer is one that is quick to grab your attention as soon as you step in the pen. So long and elegant with a high tying neck set but then draws back and opens up behind her sternum with a big, swooping maternal body type. As she takes off and goes off of her flawless skeleton, her true look of maternal cow power becomes obvious. This Freedom daughter's captivating look and presence should set her apart in the show ring, while her basic build and genotype will do the same on grass.
- Sells open.



64

cow

KBKC MISS GOLD EPIC

DOB 5/3/22 • AMAA 534923 • TATTOO RE KBKC / LE 53K

1/4 Maine • Black w/ White Marks • Polled

BOE EPIC
BK EPIC 4525G
GCC BLACKBIRD 525B

BOE GARTH
MISS BOE 502R
IRISH WHISKEY
DUFF NS 773G BLKBIRD 733
HEAT WAVE

ACT. BW

73

ACT. WW

483

SOLID GOLD
COMMERCIAL 23 HOLLY

CED	BW	WW	YW	MILK	TM	CEM	CW	REA	MB	FT
0.9	49	73	19	43						

- **Kirkpatrick Cattle, Poolville, TX**
- Here is an impressive female out of a Solid Gold cow that was a crowd favorite at the Griswold Classic. Her sire is a son of the great Boe Epic that has produced banner winning females on our ranch. This female has all of the great qualities to be a standout in the show ring as well as a future donor. Her extra shot of chrome will set her apart.
- Sells open.





65
cow

GOET I80
DADDYS MONEY 55Z
JSC VELVET 112W

DF VEGAS 310M ET
SULL BREATHLESS P898
SULL ANGUS

TSTW LIZZY 509K ET

DOB 5/9/22 • AMAA 535082 • TATTOO RE 509K / LE TSTW

3/8 Maine • Black • Polled

COWAN'S ALI 4M
BPF MILEY 80T
HAA WISDOM 505S
SF NURSES AIDE 378

CF TRUMP X
NPS MIRAGE 544 ET

ACT. BW
73
ACT. WW
475

CED	BW	WW	YW	MILK	TM	CEM	CW	REA	MB	FT
8	-0.7	44	56	10	32	1				

- **R. Thomas Stewart, Franklin, IN**
- Check out this eye-catching 3/8 May heifer. If you're in the market for a show heifer or a unique pedigreed female, 509K is your girl. Elite look with added power and shape is a simple way of describing this intriguing prospect. What sets her apart is the extra flexibility that she brings, not only in terms of structure and build but also as a breeding tool. Buy with confidence here!
- Sells open.

AMERICAN MAINE-ANJOU ASSOCIATION SALE TERMS & CONDITIONS

Terms: Terms of the sale are cash or check, payable immediately upon conclusion of the sale and before animals will be moved. Seller will reserve the right to require a certificate check as settlement before releasing any cattle.

Risk: All animals are the owner's risk prior to their sale and become the property of the purchaser as soon as declared "sold" by the auctioneer (but will be cared for at the purchaser's risk for a reasonable length of time).

Bidding: All animals sell to the highest bidder. Any disputes or challenges regarding bids will be settled by the auctioneer, and his decision will be final.

Health: All animals sell with proper individual health certificates, making them eligible for interstate transport to most destinations within the U.S.

Announcements: Announcements from the auction block will take precedence over statements in the sale catalog and other advertising. We reserve the right to withdraw any sale lot not meeting our specifications prior to sale time.

Registry Certificates: All animals shall carry papers from the American Maine-Anjou Association. These papers will be transferred to the new owner at the consignor's expense.

Shipping: Assistance will be given in making shipment after the sale, but no risk will be assumed by the seller. Expenses incident thereto are the responsibility of the purchaser, who should furnish shipping instructions at time of settlement. We recommend that insurance be obtained on lots purchased.

Breeding Guarantee: Females – Females represented as being "safe in calf" will have been examined and declared safe; they are considered breeders without further guarantee. Cows with calves at side shall be considered breeders also without further guarantee. NO guarantee shall apply to suckling calves. NO guarantee is given that bred females will deliver a live calf. **Bulls and Females** – Any animal that appears to be a non-breeder within six months after date of sale, if in healthy condition and of breeding age, may be returned to seller at buyer's expense. Seller will then reserve the right to prove the animal a breeder within a six-month period. Should the animal fail to prove a breeder, the seller, at their option, may either return purchase price to buyer or replace the animal with another of equal value in full settlement and satisfaction of all claims. In no event shall seller be responsible for more than the purchase price. In case the animal in question should develop to be a problem breeder due to negligence or improper management by the purchaser, the seller's guarantee does not apply. In cases where the animal is subjected to any hormonal or surgical reproduction techniques after this sale, this guarantee shall be null and void. Any complaints regarding breeding difficulties must be reported in writing by the buyer to seller within the time limit specified above, and animals returned must be free from disease and in good condition.

Liabilities: All persons who attend the sale do so at their own risk. The sellers and the sale manager assume no liability, legal or otherwise, for any accidents that may occur. Neither does the sale manager assume any liability for loss of or injury to livestock due to theft, mysterious disappearance, sickness, improper handling or Act of God. It is to be clearly understood that the sale manager and representatives act only as a medium between buyer and seller. They are not responsible in any way for any failure on the part of the buyer and the seller to live up to his obligations or for the truth of any warranties or representation expressed or implied. Neither does the sale manager assume any financial obligations to collect or enforce collections of monies between buyer and seller.

Contract: The above terms and guarantees shall constitute a contract between buyer seller of each animal and shall be equally binding on both. Animals that are resold following purchase in this sale shall constitute a separate transaction, and the rights and obligations of the two parties connected thereto are not covered by these Sale Terms and Conditions.

Thank You!

See you at the Bright Lights — earlier start time 2:30 p.m.!

Gavels Down the Best in Online Marketing

Trusted by More & More Outfits!



TUNE IN DAILY
To some of the
COUNTRY'S TOP SALES!



AUCTION BROADCAST & MARKETING

405-400-9505

schedule@cci.live





P.O. Box 1100
Platte City, MO 64079

FIRST CLASS MAIL

Time Dated: Please Do Not Delay

Presorted
First Class
U.S. Postage
PAID
Slate Group

AMERICAN MAINE-ANJOU ASSOCIATION'S
MAINE-ANJOU
BRIGHT
LIGHTS
Sale

SATURDAY, JANUARY 7, 2023

2:30 p.m. in the Super Barn Sale Arena

Oklahoma State Fairgrounds • Oklahoma City, Oklahoma

- MAINE / MAINETAINER / MAINE ANGUS •
- SPECIAL SEMEN INTEREST AI SIRE, HERD SIRE PROSPECTS,
- BRED & OPEN HEIFERS, EMBRYO PACKAGES
- HELD DURING THE CATTLEMEN'S CONGRESS



Southwest TypeStyles
405.317.1743